



Snow Day Shawl
Designed by Judith Heller



Snow Day Shawl

Pattern is a variation of the [Away Day Shawl](#), designed by Judith Heller
@merino_and_tomatoes

MATERIALS

[Scheepjes Snowfall](#) (80% Acrylic, 20% Nylon; 200g/400m)
14 Snow Prism x 2 yarn cakes
5mm crochet hook
Stitch markers

GAUGE/TENSION

10 x (1sc, ch1) and 18 rows using a 5mm crochet hook measures 10 x 10cm after blocking

MEASUREMENTS

About 187cm along diagonal edge x 97cm along Shawl Edging

ABBREVIATIONS (US TERMINOLOGY)

ch(s) chain(s) or chain stitch(es)
ch-1 sp(s) chain 1 space(s): number denotes number of chains in chain space
dc double crochet
patt pattern
mr magic ring
rep repeat
RS right side
sc single crochet
sc2tog single crochet 2 together to decrease by 1 st: (insert hook in next st, yoh, pull up loop) twice, yoh, draw through all loops
ss slip stitch(es)
st(s) stitch(es)
WS wrong side
yoh yarn over hook
.....; **rep from * to...** work instructions after * and then repeat that section as stated
[...] number of sts on a given row

SPECIAL ABBREVIATION

picot ch3, ss in first ch

PATTERN NOTES

This rainbow-colored shawl is a variation of YARN – The After Party 92 Away Day Shawl, designed by Judith Heller. The shawl is worked back and forth in rows, starting at the narrowest part. Turn after each row. To keep track of the row count, place a stitch marker into a sc in the first row of an 8-row rep. Ch-1 at beginning of row do not count as a st throughout; ch-1 sps made between sts do count as a st.

Color Changes

The rainbow is made using two yarn cakes. At each color change, switch to the other yarn cake to make each color twice as long. Of course, you can also finish one cake completely and then start on the second, though this will make the stripes narrower. When one color ends, change as follows: work to final yoh, pick up a loop from second yarn cake in the same color, and pull it through to complete the s, fasten off old color. Continue crocheting with the second yarn cake until the end of the next color.

INSTRUCTIONS

Make a magic ring.

Row 1 (RS) Ch1 (does not count as st throughout), 2sc, turn. [2 sts]

Row 2 (WS) Ch1, 1sc, 2sc in next st, turn. [3 sts]

Turn after each row.

Row 3 Ch1, 2sc in first st, ch1, skip 1 sc, 1dc. [4 sts]

Row 4 Ch1, 1sc, 1sc in ch-1 sp, ch1, skip 1 sc, 2sc in last st. [5 sts]

Row 5 Ch1, 2sc in first st, ch1, skip 1 sc, 1sc in ch-1 sp, ch1, skip 1 sc, 1dc. [6 sts]

Row 6 Ch1, sc2tog, ch1, skip 1 sc, 1sc in ch-1 sp, ch1, skip 1 sc, 2sc in last st.

Linen Stitch Section

Rows 7-14 form Linen Stitch patt (see Chart 1 on next page).

Row 7 (RS) Ch1, 2sc in first st, *ch1, skip 1 sc, 1sc; rep from * to last st, 1sc. [7 sts]

Row 8 (WS) Ch1, 1sc, *ch1, skip 1 sc, 1sc; rep from * to last 2 sts, ch1, skip 1 sc, 2sc in last st. [8 sts]

Row 9 Ch1, 2sc in first st, *ch1, skip 1 sc, 1sc; rep from * to last st, 1sc. [9 sts]

Row 10 Ch1, sc2tog, 1sc, *ch1, skip 1 sc, 1sc; rep from * to last 2 sts, ch1, skip 1 sc, 2sc in last st.

Row 11 Ch1, 2sc in first st, *ch1, skip 1 sc, 1sc; rep from * to end. [10 sts]

Row 12 Ch1, 2sc, *ch1, skip 1 sc, 1sc; rep from * to last 2 sts, ch1, skip 1 sc, 2sc in last st. [11 sts]

Row 13 Ch1, 2sc in first st, *ch1, skip 1 sc, 1sc; rep from * to end. [12 sts]

Row 14 Ch1, sc2tog, *ch1, skip 1 sc, 1sc; rep from * to last 2 sts, ch1, skip 1 sc, 2sc in last st.

Rows 15 (RS)-46 Rep Linen Stitch patt 4 more times. [36 sts]

Filet Stitch Section

Rows 47-54 form Filet Stitch patt (see Chart 2 on next page).

Row 47 Ch1, 2sc in first st, *ch1, skip 1 sc, 1sc; rep from * to last st, 1sc. [37 sts]

Row 48 Ch2, 1dc, *ch1, skip 1 sc, 1dc; rep from * to last 2 sts, ch1, skip 1 sc, 2dc in last st. [38 sts]

Row 49 Ch1, 2sc in first st, *ch1, skip 1 dc, 1sc; rep from * to last st, 1sc. [39 sts]

Row 50 Ch1, sc2tog, 1sc, *ch1, skip 1 sc, 1sc; rep from * to last 2 sts, ch1, skip 1 sc, 2sc in last st.

Row 51 Ch1, 2sc in first st, *ch1, skip 1 sc, 1sc; rep from * to end. [40 sts]

Row 52 Ch2, 2dc, *ch1, skip 1 sc, 1dc; rep from * to last 2 sts, ch1, skip 1 sc, 2dc in last st. [41 sts]

Row 53 Ch1, 2sc in first st, *ch1, skip 1 dc, 1sc;

rep from * to end. [42 sts]

Row 54 Ch1, sc2tog, *ch1, skip 1 sc, 1sc; rep from * to last 2 sts, ch1, skip 1 sc, 2sc in last st.

Rows 55-78 Work Linen Stitch patt 3 more times. [60 sts]

Rows 79-86 Work Filet Stitch patt once more. [66 sts]

Rows 87-110 Work Linen Stitch patt 3 more times. [84 sts]

Rows 111-118 Work Filet Stitch patt once more. [90 sts]

Rows 119-142 Work Linen Stitch patt 3 more times. [108 sts]

Rows 143-150 Work Filet Stitch patt once more. [114 sts]

Rows 151-166 Work Linen Stitch patt twice more. [126 sts]

Rows 167-174 Work Filet Stitch patt once more. [132 sts]

Rows 175-190 Work Linen Stitch patt twice more. [144 sts]

Rows 191-198 Work Filet Stitch patt once

more. [150 sts]

Shawl Edging

See Chart 3.

Row 199 Picot, ch1, skip 1 sc, *1sc in ch-1 sp, ch1, skip 1 sc, 1sc, picot; rep from * to last st, ss in last st, fasten off. [151 sts]

TO FINISH

Weave in ends and block to measurements.



Chart 1: Linen Stitch Patt Rep

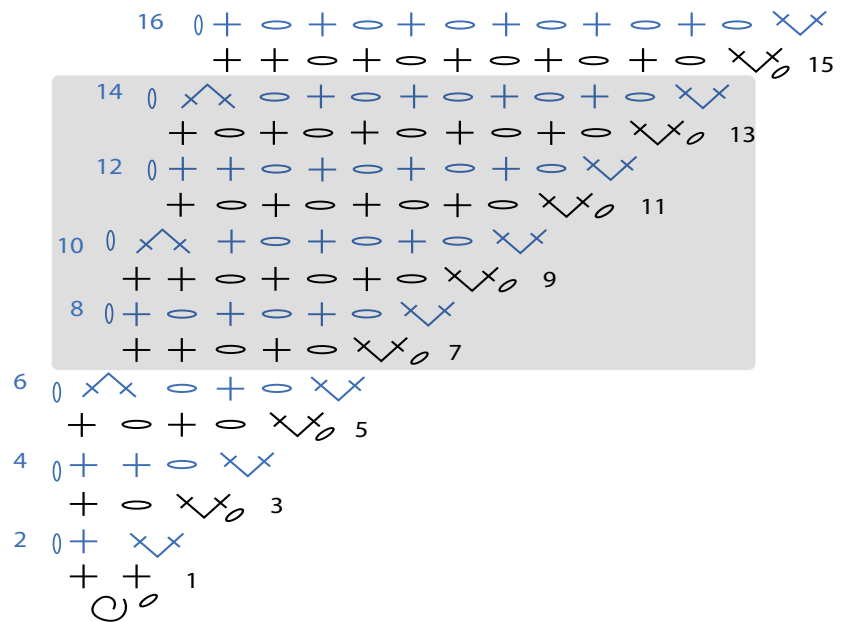


Chart 2: Filet Patt Rep

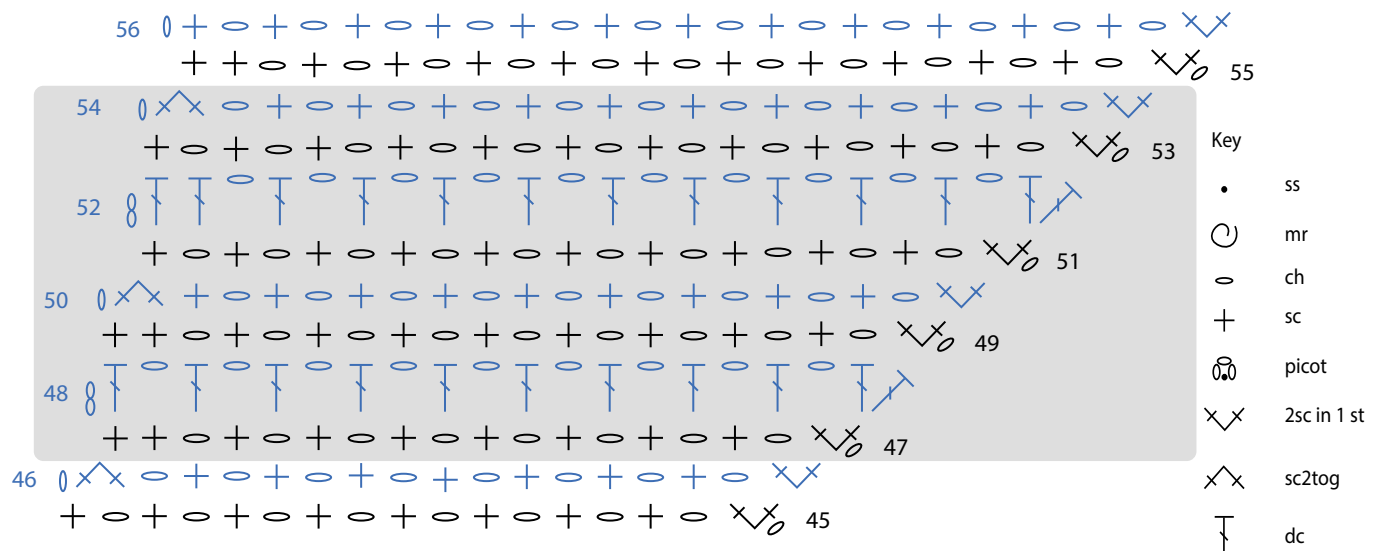
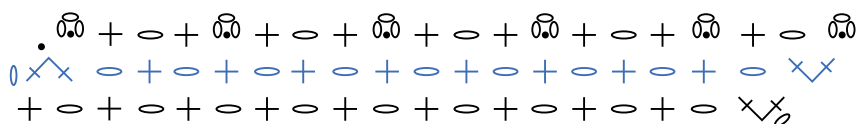


Chart 3: Shawl Edging



- Key
- ss
 - mr
 - ch
 - ⊕ sc
 - ⊖ picot
 - ×× 2sc in 1 st
 - ×× sc2tog
 - ⊥ dc
 - ⊥ 2dc in 1 st
 - patt rep

Pattern copyright © Scheepjes.com. This pattern is for personal use only. It may not be distributed digitally, sold, or published online. Items made from this pattern may be sold with credit to the designer.