



# ***Ombre Embrace Wrap***

by Scheepjes Design

# Ombre Embrace Wrap

By Scheepjes Design  
@Scheepjes

## MATERIALS

### Scheepjes Colour Crafter Solid Pack

(100% Premium Acrylic (Anti Pilling);  
2 x 150g/450m)

**Yarn A** 1005 Barneveld x 1 solid pack

### Scheepjes Colour Crafter Colour Pack

(100% Premium Acrylic (Anti Pilling);  
6 x 50g/150m)

**Yarns B** Tulip Fields x 1 colour pack, includes the following colours: 1827 Drachten, 1241 Den Bosch, 1130 Sittard, 1080 Venlo, 1432 Heerlen and 1277 Amstelveen

4.5mm crochet hook

Stitch marker

## GAUGE/TENSION

5 3tr-grps and 12 rows to measure 10 x 10cm over pattern using a 4.5mm hook

## MEASUREMENTS

Wrap measures approx. 46 x 190cm (18 x 74¾in)

## ABBREVIATIONS (UK TERMS)

[ ] number of sts on a given row

**ch** chain(s) or chain stitch(es)

**ch-1 sp(s)** chain 1 space(s): number denotes number of chains in chain space

**dc** double crochet

**grp(s)** group(s)

**rep(s)** repeat(s)

**RS** right side

**st(s)** stitch(es)

**tr** treble crochet

**WS** wrong side

(.....) **once/twice/3 times** work instructions between brackets the *total* number of times stated

## SPECIAL ABBREVIATIONS

**standing tr** place slip knot on hook to start st and work tr as usual

**v-st** (1tr, ch1, 1tr) in same st/space

## INSTRUCTIONS

See Crochet Chart: Stitch Pattern.

Using Yarn A, ch281.

**Row 1 (RS)** Start in second ch from hook, 1dc, (ch2, skip 2 ch, 1dc in next ch) to end, do not turn. [93 ch-2 sps, 94 dc]

Remove hook from loop and leave loop of Yarn A hanging (*tip: place stitch marker in loop to prevent unravelling of sts*).

**Row 2 (RS)** Join Yarn B with standing tr to first ch-2 sp of Row 1, 2tr in same ch-2 sp, 3tr in each ch-2 sp to end, turn. [279 tr]

Remove hook from loop and leave loop of Yarn B hanging. Place loop of Yarn A back on hook. Make sure Yarn B is at the back of the work before continuing with next row.

**Row 3 (WS)** Ch4 (counts as 1 tr + 1 ch-1 sp throughout), 1tr in first dc 2 rows below, 1v-st in each dc 2 rows below to end (*working over sts of previous row*), do not turn. [94 v-sts]

Remove hook from loop and leave loop of Yarn A hanging. Insert hook into first ch-1 sp of Row 3 and pull loop of Yarn B through.

**Row 4 (WS)** Ch3 (counts as 1 tr throughout), 2tr in same ch-1 sp, 3tr in each ch-1 sp to end, turn. [282 tr]

Remove hook from loop and leave loop of Yarn B hanging. Place loop of Yarn A back on hook. Make sure Yarn B is at the back of work before continuing with next row.

**Row 5 (RS)** Ch3, 1v-st between 2 tr 2 rows below (*not in v-st! working over sts of previous row*) to last v-st, 1tr in last st 2 rows below, do not turn. [93 v-sts, 2 tr]

Remove hook from loop and leave loop of Yarn A hanging. Insert hook into first ch-1 sp of Row 5 and pull loop of Yarn B through.

**Row 6 (RS)** Ch3, 2tr in same ch-1 sp, 3tr in each ch-1 sp to end, turn. [279 tr]

Remove hook from loop and leave loop of Yarn B hanging. Place loop of Yarn A back on hook. Make sure Yarn B is at the back of work before continuing with next row.

**Row 7 (WS)** Ch4, 1tr in sp between first 2 tr 2 rows below, 1v-st in each sp between 2 tr 2 rows below (*not in v-sts! working over sts of*

*previous row*) to end, do not turn. [94 v-sts]

Remove hook from loop and leave loop of Yarn A hanging. Insert hook into first ch-1 sp of Row 7 and pull loop of Yarn B through.

**Next rows** Rep Rows 4-7, changing Yarn B after 5 rows in the same Yarn B.

Fasten off Yarn B but **do not** fasten off Yarn A. Continue to Border.

## Border

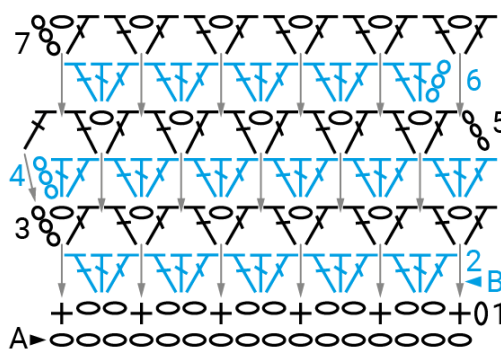
With RS facing, evenly crochet dc border around Wrap. Exact number of sts is not important as long as sts lay flat.

**Round 1 (RS)** Ch1, crochet approx. 2dc around each row end, 3dc in each corner and 1dc in each tr and ch-1 sp around Wrap, sl st in first dc. Fasten off.

## TO FINISH

Weave in all ends and block Wrap to measurements.

## CROCHET CHART: STITCH PATTERN



### Key

○ ch

+ dc

↑ tr

↓ work st in (between) st(s)  
2 rows below

## PATTERN NOTES

Wrap is worked flat in rows. Instead of turning work after every row, turn work after every 2 rows. First work a row in Yarn A, then a row in Yarn B before turning your work. Place stitch marker in loop of to prevent unravelling of sts of yarn not used. Use colours of Yarn B in order listed in Materials to create ombre effect.

Pattern copyright © Scheepjes.com. This pattern is available for unlimited personal use. You may print a copy of the pattern or keep a digital copy for personal use only. Do not reproduce this pattern or sell this pattern (either digitally or in print). This document may not be posted online, either as a complete document or in part. You are allowed to sell items that are made using this pattern as long as the designer is credited.