

# NOVEMBER

Crochet Pattern: Colour Block C2C Scarf



# COLOUR BLOCK C2C SCARF

By Scheepjes Design

## Materials

Stone Washed Colour Pack (78% Cotton, 22% Acrylic; 10 x 25g/65m)

2 x Manifest

4mm crochet hook

## Gauge/Tension

Tension is not critical for this project, but different measurements may result in different yarn amounts needed

## MEASUREMENTS

22 blocks wide = 22cm (8¾in), 190 blocks long = 190cm (74¾in)

## ABBREVIATIONS (UK terms)

[ ] number of sts on a given row

**beg** beginning

**ch-1 sp(s)** chain 1 space(s): number denotes number of chains in chain space

**ch(s)** chain(s) or chain stitch(es)

**cont** continue

**htr** half treble crochet

**prev** previous

**rep** repeat

**RS** right side

**ss** slip stitch

**st(s)** stitch(es)

**WS** wrong side

**yoh** yarn over hook

**(.....) x times/to end** work instructions between brackets the total number of times stated

## Pattern Notes

Scarf uses corner-to-corner (C2C) crochet method: work rows diagonally in blocks of 2 ch and 3 htr. Each diagonal row is increased by one block, beg with one block in bottom right corner and reaching 22 blocks in Row 22. From Row 23, cont working 22 blocks across entire diagonal edge until end of Row 169, then decrease each row by one block.

Turn work after each row. See *Crochet Chart: C2C Stitch Pattern*.

Each colour block is 22 blocks wide and 19 blocks high. Change yarn colour where needed within the row to achieve block effect as follows: in last yoh of last htr of prev block, yoh, insert hook in ch-2 sp, yoh, pull up loop, yoh in new colour, draw through all loops.

## Instructions

See *Crochet Chart: C2C Stitch Pattern*.

## INCREASE SECTION

Rows are diagonal.

**Row 1 (RS)** Ch5, 1htr in third, fourth and fifth ch from hook, turn. [1 block]

**Row 2 (WS)** Ch5, 1htr in third, fourth and fifth ch from hook, rotate block just made 90°, 1ss in ch-2 sp at beg of adjoining block from Row 1, ch2, 3htr in same ch-2 sp, turn. [2 blocks]

**Row 3** Ch5, 1htr in third, fourth and fifth ch from hook, rotate block just made, (1ss in ch-2 sp at beg of adjoining block from prev row, ch2, 3htr in same ch-2 sp) twice. [3 blocks]

**Row 4** Ch5, 1htr in third, fourth and fifth ch from hook, rotate block just made, (1ss in ch-2 sp at beg of adjoining block from prev row, ch2, 3htr in same ch-2 sp) 3 times. [4 blocks]

**Row 5** Ch5, 1htr in third, fourth and fifth ch from hook, rotate block just made, (1ss in ch-2 sp at beg of adjoining block from prev row, ch2, 3htr in same ch-2 sp) 4 times. [5 blocks]

**Row 6** Ch5, 1htr in third, fourth and fifth ch from hook, rotate block just made, (1ss in ch-2 sp at beg of adjoining block from prev row, ch2, 3htr in same ch-2 sp) to end. [6 blocks]

**Rows 7-22** Rep Row 6. [22 blocks]

## STRAIGHT SECTION

Work blocks across entire diagonal edge without increasing or decreasing.

**Row 23** Ch5, 1htr in third, fourth and fifth ch from hook, rotate block just made, (1ss in ch-2 sp at beg of adjoining block from prev row, ch2, 3htr in same ch-2 sp) to last block of prev row, ss in ch-2 sp at beg of last block of prev row. [22 blocks]

**Row 24** 1ss in each of next 3 htr of last block of prev row, 1ss in ch-2 sp at beg of same block, ch2, 3htr in same ch-2 sp, (1ss in ch-2 sp at beg of next adjoining block from prev row, ch2, 3htr in same ch-2 sp) to end.

**Rows 25-169** Rep Rows 23-24.

## DECREASE SECTION

**Row 170** 1ss in each of next 3 htr of last block of prev row, 1ss in ch-2 sp at beg of same block, ch2, 3htr in same ch-2 sp, (1ss in ch-2 sp at beg of next adjoining block from prev row, ch2, 3htr in same ch-2 sp) to last block of prev row, 1ss in ch-2 sp at beg of last block of prev row. [21 blocks]

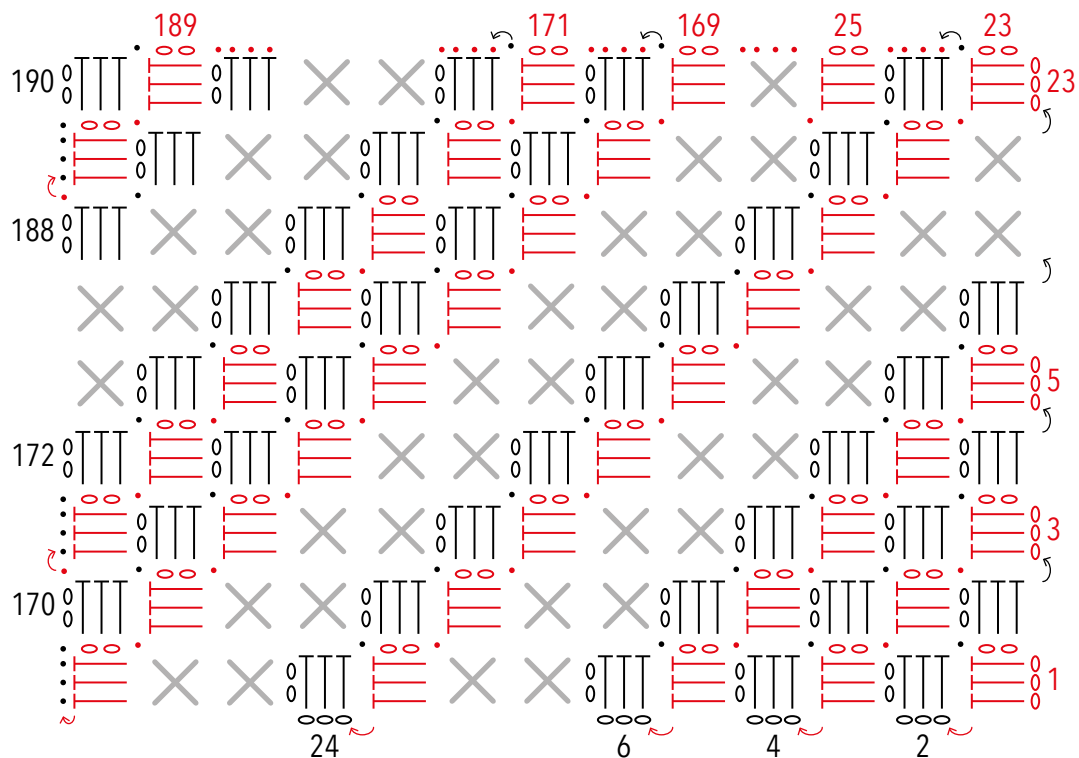
**Next 19 rows** Rep Row 170. [2 blocks]

**Last row** 1ss in each of next 3 htr of last block of prev row, 1ss in ch-2 sp at beg of same block, ch2, 3htr in same ch-2 sp, 1ss in ch-2 sp at beg of next adjoining block from prev row. [1 block]  
Fasten off.

## TO FINISH

Weave in all ends and block gently.

## Crochet Chart: C2C Stitch Pattern



### Key

- ch
- ┤ htr
- ss
- ↪ starting point of next row
- ✕ continue as before