



# ***Feather and Fan Tee***

by Siân Brown





# Masha Sweater

By Siân Brown

## MATERIALS

**Scheepjes Cotton Create** (50% Recycled Cotton, 50% Premium Cotton; 50g/170m)  
529 Unwind x 9 (9: 10: 11: 11) balls  
**or**  
**Scheepjes Organicon** (100% Organic Soft Cotton; 50g/170m)  
204 Lavender Haze x 9 (9: 10: 11: 11) balls  
2.75mm and 3mm knitting needles

## GAUGE/TENSION

26 sts and 48 rows to measure 10 x 10cm over st patt using 3mm needles

## ABBREVIATIONS

[ ] number of sts on a given row

**k** knit  
**p** purl  
**p2tog** purl 2 sts together: insert needle pwise into first 2 sts and purl them together (right leaning decrease)  
**patt** pattern  
**pwise** purlwise  
**rep** repeat  
**RS** right side  
**st(s)** stitch(es)  
**WS** wrong side  
**yo** yarn over  
(.....) **x times/to end** work instructions between brackets the *total* number of times stated

## PATTERN NOTES

Tee is knitted flat in Feather and Fan patt from bottom-up. Front and Back are identical, include sleeves and are joined at shoulder

seams. Finish Tee by joining sleeve and side seams.

## INSTRUCTIONS

### Back and Front

Using 2.75mm needles, cast on 136 (149: 162: 175: 188) sts.

Knit 5 rows.

Change to 3mm needles.

Work in patt

See *Knitting Chart: Feather and Fan Pattern*.

**Row 1 (RS)** K3, \*k4, yo, (k1, yo) 5 times, k4; rep from \* 9 (10: 11: 12: 13) more times, k3. [196 (215: 234: 253: 272) sts]

**Row 2 (WS)** Purl.

**Row 3 P3**, \*(p2tog) 3 times, p7, (p2tog) 3 times; rep from \* 9 (10: 11: 12: 13) more times, p3. [136 (149: 162: 175: 188) sts]

**Row 4** Knit.

**Row 5** Knit.

**Row 6** Purl.

These 6 rows set patt and are repeated.

Work in patt until work measures 40cm from cast-on edge, ending with a Row 4.

### Shape for Sleeves

**Next row (RS)** Cast on 13 sts, k to end. [149 (162: 175: 188: 201) sts]

**Next row (WS)** Cast on 13 sts, p to end. [162 (175: 188: 201: 214) sts]

**Next row** Cast on 13 sts, k3, \*k4, yo, (k1, yo) 5 times, k4; rep from \* 11 (12: 13: 14: 15) more times, k3. [247 (266: 285: 304: 323) sts]

**Next row** Cast on 13 sts, p to end. [260 (279: 298: 317: 336) sts]

MEASUREMENTS						
Size		S	M	L	XL	XXL
To fit bust	(cm) (in)	81-86 32-34	91.5-96.5 36-38	101.5-106.5 40-42	111.5-117 44-46	122-127 48-50
Actual bust	(cm) (in)	103 40½	113 44½	123 48½	133 52½	143 56¼
Actual length	(cm) (in)	60 23½	61 24	62 24½	63 24¾	64 25¼
Sleeve seam	(cm) (in)	15 6	15 6	15 6	15 6	15 6

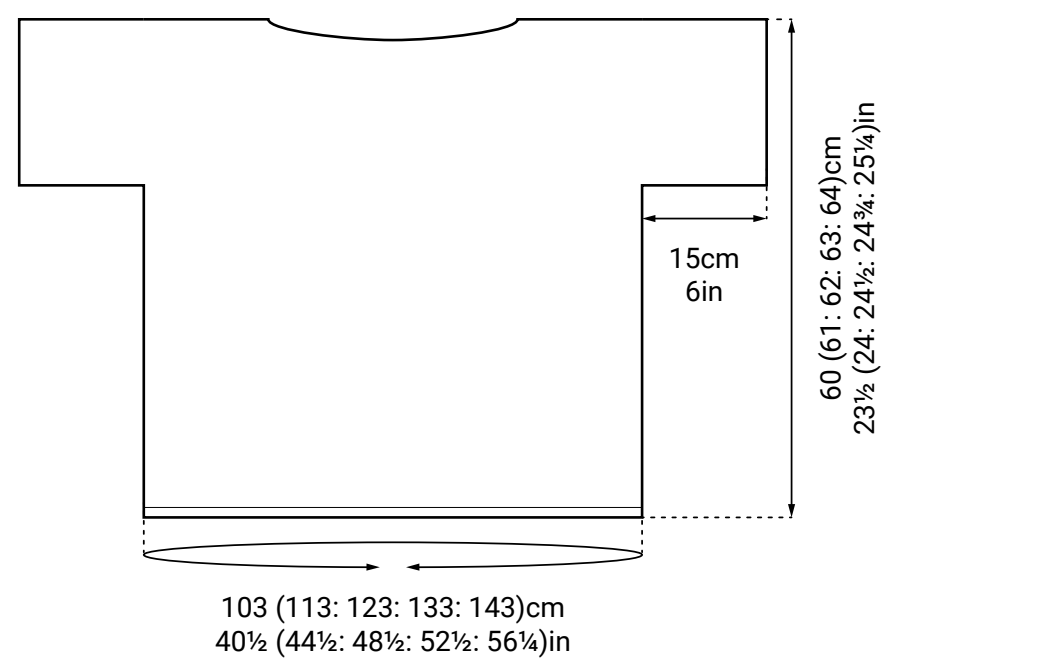
**Next row** Cast on 13 sts, p16, \*(p2tog) 3 times, p7, (p2tog) 3 times; rep from \* 11 (12: 13: 14: 15) more times, p16. [201 (214: 227: 240: 253) sts]

**Next row** Cast on 13 sts, k to end. [214 (227: 240: 253: 266) sts]  
 Work in patt as now set until work measures 60 (61: 62: 63: 64) cm from cast-on edge, ending with a Row 5.  
 Cast off pwise.

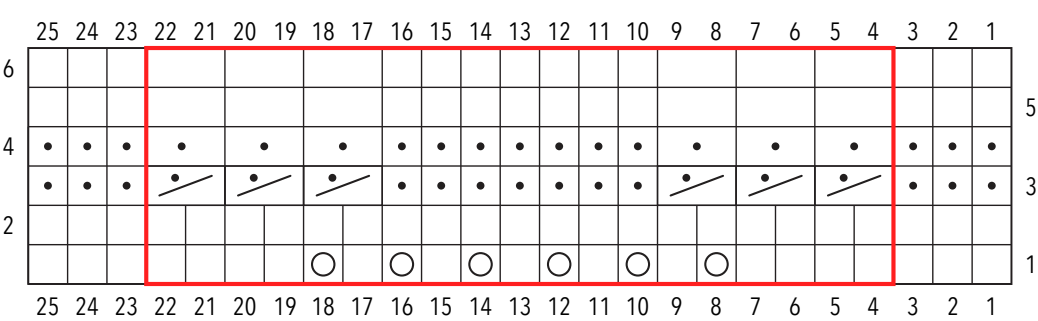
**TO FINISH**  
 Leaving centre 29 (30: 31: 32: 33)cm open for neck opening, join shoulder seams. Join side and sleeve seams. Weave in all ends and block to measurements.



SCHEMATIC: GARMENT MEASUREMENTS



KNITTING CHART: FEATHER AND FAN PATTERN



**Key**

RS: k, WS: p

p2tog

RS: p, WS: k

yo





Pattern copyright © Scheepjes.com. This pattern is available for unlimited personal use. You may print a copy of the pattern or keep a digital copy for personal use only. Do not reproduce this pattern or sell this pattern (either digitally or in print). This document may not be posted online, either as a complete document or in part. You are allowed to sell items that are made using this pattern as long as the designer is credited.