

KNITTING PATTERN

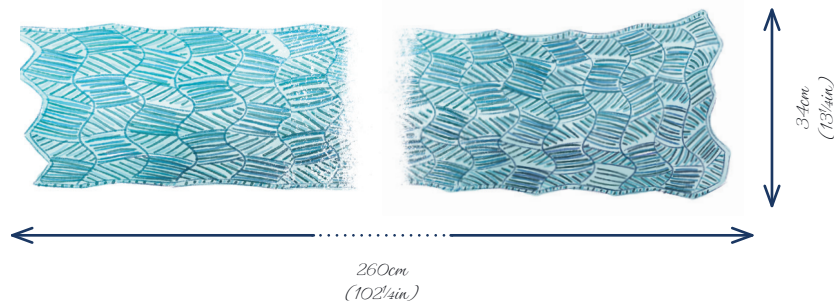


ENGLISH



WHITECAPS WRAP

Yigitcan Vatansever



WHITECAPS WRAP

Yığitcan Vatansever

MATERIALS

Simy's Studio Yarn Hope DK Weight (100% Superwash Merino Wool; 100g/300m)

Yarn A 01 Faith will move mountains x 2 skeins

Simy's Studio Yarn Truth DK Weight (100% Superwash Merino Wool; 100g/300m)

Yarn B 60 No man is an island x 2 skeins

4mm circular knitting needles, 60cm long, or two 40cm dpns

GAUGE/TENSION

Skewed Squares brioche motif patt rep measures 22 sts and 24 rows, to measure 10cm horizontally and 10.5cm vertically over st st using 4mm needles unblocked (11cm and 12cm after blocking)

MEASUREMENTS

34 x 260cm (13 1/4 x 102 1/4 in)

ABBREVIATIONS

See page 4

SPECIAL ABBREVIATIONS

brk Brioche knit: knit the st slipped in the previous row together with its yarn over

brkyobr Brioche knit, yarn over, brioche knit: two-stitch increase made by working three times into the same st. Brioche knit 1 st but leave st on left needle, yarn over by bringing yarn between needles to front, then over right needle, brioche knit 1 st into same st as before, slip st off left needle

brLsl dec Brioche left-slanted decrease: two-stitch decrease involving 3 sts. Slip the first st knitwise (with its yarn over), brioche knit the following 2 sts together, pass the slipped st over (with its yarn over)

brp Brioche purl: purl the st slipped in the previous row together with its yarn over

brRsl dec Brioche right-slanted decrease: two-stitch decrease involving 3 sts. Slip the first st knitwise (with its yarn over), knit the next st, pass the slipped st over (with its yarn over), move the knit st from right to left needle and pass the foll st (with its yarn over) on left needle over the first. Slip st on left needle back to right needle

sl3 wyif slip 3 sts with yarn in front: slip each st purlwise with yarn in front then take yarn between needles to back and work foll knit st

sl1yo slip 1 st purlwise with yarn in front, yarn over

PATTERN NOTES

Long rectangular wrap is worked flat in two-colour brioche technique. Colour blocks are formed by colour domination with syncopated brioche. There are decs and incs only in the blocks in which Yarn A is dominant, resulting in skewed squares. There are no decs or incs in the Yarn B blocks.

Single garter ridges are worked in between the squares horizontally. After each garter ridge, the colour domination changes.

Edges are trimmed with i-cord. As instructed, slide work back to

beginning of needles after completing the first row of RS and WS; turn the work after completing the second row of RS and WS.

INSTRUCTIONS

Using Yarn A, cast on 72 sts using long-tail cast-on method.

Set-up Section

Row 1 (RS) With Yarn A, k to last 3 sts, sl3 wyif. [72 sts] *Slide.*
Join Yarn B.

Row 2 (RS) With Yarn B, p to last 3 sts, sl3 wyif. *Turn.*

Row 3 (WS) With Yarn A, k3, *(sl1yo, k1) 5 times, sl1yo, (p1, sl1yo) 5 times, p1; rep from * twice more, sl3 wyif. *Slide.*

Row 4 (WS) With Yarn B, k3, *(brp, sl1yo) 5 times, brp, (sl1yo, brk) 5 times, sl1yo*; rep from * twice more, sl3 wyif. *Turn.*

Row 5 (RS) With Yarn A, k3, *brkyobrk, (sl1yo, brk) 3 times, sl1yo, brRsl dec, (sl1yo, brp) 5 times, sl1yo; rep from * twice more, sl3 wyif. *Slide.*

Row 6 (RS) With Yarn B, k3, *sl1yo, p, (sl1yo, brp) 4 times, sl1yo, (brk, sl1yo) 5 times, brk; rep from * twice more, sl3 wyif. *Turn.*

Row 7 (WS) With Yarn A, k3, *(sl1yo, brk) 5 times, sl1yo, (brp, sl1yo) 5 times, brp; rep from * twice more, sl3 wyif. *Slide.*

Row 8 (WS) With Yarn B, k3, *(brp, sl1yo) 5 times, brp, (sl1yo, brk) 5 times, sl1yo*; rep from * twice more, sl3 wyif. *Turn.*

Rep Rows 5-8 a further 4 times.

Left-leaning Section

Row 1 (RS) With Yarn A, k3, *brk, k1; rep from * to last 3 sts, sl3 wyif. *Slide.*

Row 2 (RS) With Yarn B, k3, p to last 3 sts, sl3 wyif. *Turn.*

Row 3 (WS) With Yarn A, k3, *(p1, sl1yo) 5 times, p1, (sl1yo, k1) 5 times, sl1yo; rep from * twice more, sl3 wyif. *Slide.*

Row 4 (WS) With Yarn B, k3, *(sl1yo, brk) 5 times, sl1yo, (brp, sl1yo) 5 times, brp; rep from * twice more, sl3 wyif. *Turn.*

Row 5 (RS) With Yarn A, k3, *(sl1yo, brp) 5 times, sl1yo, brLsl dec, (sl1yo, brk) 3 times, sl1yo, brkyobrk; rep from * twice more, sl3 wyif. *Slide.*

Row 6 (RS) With Yarn B, k3, *(brk, sl1yo) 5 times, brk, (sl1yo, brp) 4 times, sl1yo, p1, sl1yo; rep from * twice more, sl3 wyif. *Turn.*

Row 7 (WS) With Yarn A, k3, *(brp, sl1yo) 5 times, brp, (sl1yo, brk) 5 times, sl1yo; rep from * twice more, sl3 wyif. *Slide.*

Row 8 (WS) With Yarn B, k3, *(sl1yo, brk) 5 times, sl1yo, (brp, sl1yo) 5 times, brp; rep from * twice more, sl3 wyif. *Turn.*

Rep Rows 5-8 a further 4 times.

Right-leaning Section

Row 1 (RS) With Yarn A, k3, *k1, brk; rep from * to last 3 sts, sl3 wyif. *Slide.*

Row 2 (RS) With Yarn B, k3, p to last 3 sts, sl3 wyif. *Turn.*

Row 3 (WS) With Yarn A, k3, *(sl1yo, k1) 5 times, sl1yo, (p1, sl1yo) 5 times, p1; rep from * twice more, sl3 wyif. *Slide.*

Row 4 (WS) With Yarn B, k3, *(brp, sl1yo) 5 times, brp, (sl1yo, brk) 5 times, sl1yo*; rep from * twice more, sl3 wyif. *Turn.*

Row 5 (RS) With Yarn A, k3, *brkyobrk, (sl1yo, brk) 3 times, sl1yo, brRsl dec, (sl1yo, brp) 5 times, sl1yo; rep from * twice more, sl3 wyif. *Slide.*

Row 6 (RS) With Yarn B, k3, *sl1yo, p1, (sl1yo, brp) 4 times, sl1yo, (brk, sl1yo) 5 times, brk; rep from * twice more, sl3 wyif. *Turn.*

Row 7 (WS) With Yarn A, k3, *(sl1yo, brk) 5 times, sl1yo, (brp, sl1yo) 5 times, brp; rep from * twice more, sl3 wyif. *Slide.*

Row 8 (WS) With Yarn B, k3, *(brp, sl1yo) 5 times, brp, (sl1yo, brk) 5 times, sl1yo*; rep from * twice more, sl3 wyif. *Turn.*

Rep Rows 5-8 a further 4 times.

Rep Left-leaning Section, then Right-leaning Section 19 more times.

Garage Ridge

Row 1 (RS) With Yarn A, k3, *(brk, k1); rep from * to last 3 sts, sl3 wyif. *Slide.*

Row 2 (RS) With Yarn B, k3, p to last 3 sts, sl3 wyif. *Turn.*
Using Yarn A, cast off loosely.

TO FINISH

Weave in all ends and block to measurements. Pin wavy edges into shape until dry.

The length and exquisite drape of this breathtaking accessory show off the interchanging diagonals and interlocking patterning created by the brioche technique to their best advantage



ABBREVIATIONS

[]	number of sts on a given row/round	rem	remain(s)/remaining
alt	alternate	rep	repeat(s)
beg	begin(s)/beginning	RS	right side
cont	continue(d)/continuing	sk2po	slip 1, knit 2 tog, pass slipped stitch over
dec	decrease(s)	skpo	slip 1, knit 1, pass slipped st over
dpn(s)	double pointed needle(s)	sm	stitch marker(s)
foll(s)	follow(s)/following	ssk	slip slip knit to dec by 1 st: slip 1 st kwise, slip next st kwise, insert left needle into front of 2 slipped sts and knit them tog (left leaning dec)
g st	garter stitch	st st	stocking stitch: RS knit, WS purl
inc	increase(s)	st(s)	stitch(es)
k	knit	tbl	through back loop(s)
k2tog	knit 2 sts tog to dec by 1 st: insert needle kwise into first 2 sts and knit them tog (right leaning dec)	tog	together
kfb	knit front and back to inc by 1 st: insert needle kwise into next st; knit as normal but don't slip st from needle, instead bring needle around to back and knit through back loop of same st	WS	wrong side
kwise	knitwise	yo	yarn over
meas	measure(s)/measuring		
p	purl		
patt	pattern		
p2tog	purl 2 sts tog to dec by 1 st: insert needle pwise into first 2 sts and purl them tog (right leaning dec)		
pm	place stitch marker		
pwise	purlwise		

Repeat formats

*.....; **rep from * x more times/to end** work instructions after * and then repeat that section as stated; the same applies to any number of asterisks: **.....; rep from ** etc.

(.....) **x times/to end** work instructions between brackets the *total* number of times stated



TIPS FOR MERINO CARE

Simy's Studio Book contains patterns for our gorgeous new yarns. Treat these hand-dyed, high quality natural fibres gently. Merino may be less hardwearing than synthetic blends, especially for items worn often, such as socks, but has the advantage of requiring less frequent washing. Use a pH-neutral mild detergent and turn inside out to help prevent wear. Find out more at: simysstudio.com

ABOUT SIMY'S STUDIO

At Simy's Studio, we understand that crafting is not just a hobby; it's an enriching lifestyle that nurtures passion and ignites the imagination. Our brand is built upon the belief that crafting goes beyond the finished product – it's an extraordinary journey of self-discovery and a gateway to exploring ideas.

A curated selection of patterns invites you to explore the wonderful possibilities Simy's Studio Yarn has to offer.



@simysstudio



simysstudio.com



@simysstudio



simys-studio

SIMY'S STUDIO

Mercuriusweg 16
9482WL Tynaarlo
The Netherlands

For all enquiries: simysstudio.com

For errata information: simysstudio.com/en/errata

With thanks to Wysing Arts Centre

Phil Root & Giles Round, *The Grantchester Pottery*, 2014

Folke Kobberling and Martin Kaltwasser, *Amphis*, 2008

Powered by



De Bondt

INSPIRING CREATIVITY

All rights reserved. No part of this pattern may be copied or reproduced without written permission of the publisher. You may not distribute or sell electronic or paper copies of this pattern. For personal non-commercial use only.