

KNITTING PATTERN



ENGLISH



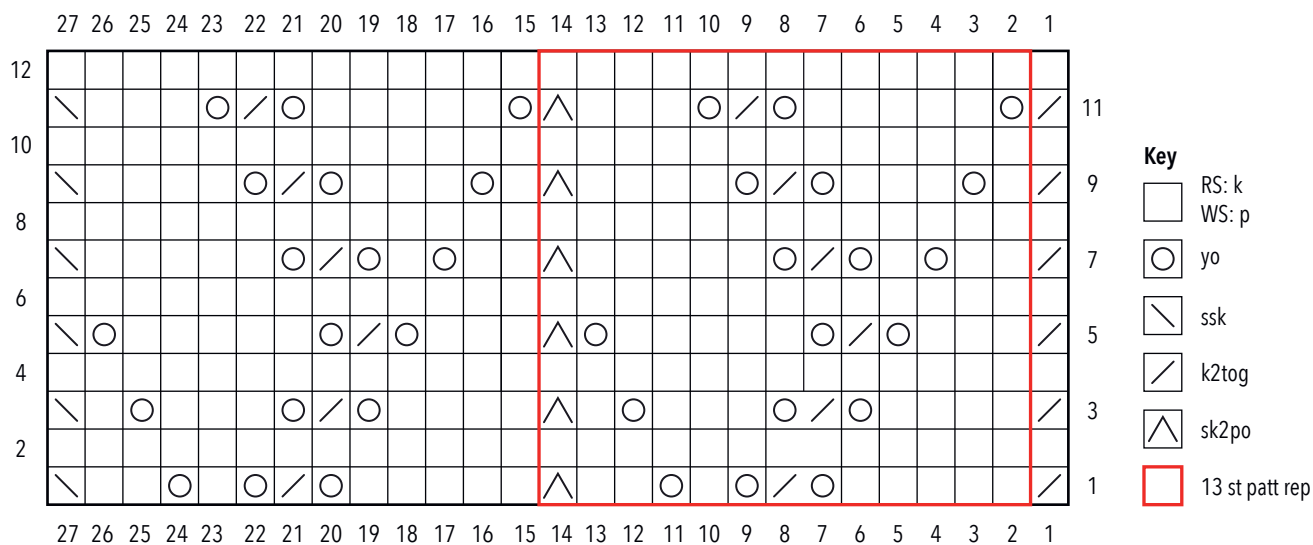
# BUTTON-UP BRAMBLE

*To Allport*

## Measurements Table

Size	S	M	L	XL	XXL
To fit Bust	81-86cm (32-34in)	91.5-96.5cm (36-38in)	101.5-106.5cm (40-42in)	111.5-117cm (44-46in)	122-127cm (48-50in)
Actual Bust	103cm (40½in)	113cm (44½in)	123cm (48½in)	132cm (52in)	143cm (56¼in)
Actual Length	50cm (19¾in)	52cm (20½in)	56cm (22in)	59cm (23¼in)	61cm (24in)
Sleeve Seam	35cm (13¾in)	35cm (13¾in)	36cm (14in)	37cm (14½in)	37cm (14½in)

## Chart



## Schematic







*A captivating V-neck  
cardigan for the shifting seasons.  
Lace patterned sleeves in the  
striking hues of Hope contrast  
with the variegated shades  
of Truth*



## BUTTON-UP BRAMBLE CARDIGAN

*To Allport*

### MATERIALS

**Simy's Studio Yarn Truth DK Weight** (100% Superwash Merino Wool; 100g/300m)

**Yarn A** 64 You're never too old to learn x 2 (2: 3: 3: 4) skeins

**Simy's Studio Yarn Hope DK Weight** (100% Superwash Merino Wool; 100g/300m)

**Yarn B** 08 Opposites attract x 2 (2: 3: 3: 4) skeins

3.25mm, 3.5mm and 4mm knitting needles

3.5mm circular knitting needles, 100cm long (for Border/neckband)

Stitch holder

17mm buttons x 5 (5: 5: 5: 6)

### GAUGE/TENSION

23 sts and 30 rows to measure 10 x 10cm over st st using

4mm needles

22 sts and 32 rows to measure 10 x 10cm over Lace Patt using

4mm needles

### MEASUREMENTS

See Measurements Table on page 2

### ABBREVIATIONS

See page 6

### SPECIAL ABBREVIATIONS

**dec 1 st** decrease 1 st at each side of work. On RS rows: k2, ssk, work across row to last 4 sts, k2tog, k2. On WS rows: p2, p2tog, work across row to last 4 sts, p2tog tbl, p2

### PATTERN NOTES

Where possible: alternate skeins of Truth every two rows to avoid colour pooling and blend old and new skeins of Hope for 1 or 2 cm before changing skein.

V-neck cardigan is worked flat and bottom up in separate pieces for Back, Fronts and Sleeves. Sleeves feature Lace Pattern. Refer to Chart on page 2 or follow written instructions.

Shoulder seams are joined then Border/neckband is picked up and knit. There is a seam allowance of 1 st at both sides of Back and Sleeves, and at side of each Front.

Sleeves are set into armholes. Sleeve and side seams are sewn and buttons attached.

When reading chart, read RS rows from right to left and WS rows from left to right.

### STITCH PATTERNS

#### Single Rib

**Row 1 (RS)** \*K1, p1; rep from \* to end.

**Row 2 (WS)** Rep Row 1.

#### Lace Pattern

Worked over multiples of 13 + 1 st(s) and 12 rows.

**Row 1 (RS)** K2tog, \*k5, yo, k2tog, yo, k1, yo, k2, sk2po; rep from \* to last 12 sts, k5, yo, k2tog, yo, k1, yo, k2, ssk.

**Row 2 and all WS rows** Purl.

**Row 3** K2tog, \*k4, yo, k2tog, yo, k3, yo, k1, sk2po; rep from \* to last 12 sts, k4, yo, k2tog, yo, k3, yo, k1, ssk.

**Row 5** K2tog, \*k3, yo, k2tog, yo, k5, yo, k2po; rep from \* to last 12 sts, k3, yo, k2tog, yo, k5, yo, ssk.

**Row 7** K2tog, \*k2, yo, k1, yo, ssk, yo, k5, sk2po; rep from \* to last 12 sts, k2, yo, k1, yo, ssk, yo, k5, ssk.

**Row 9** K2tog, \*k1, yo, k3, yo, ssk, yo, k4, sk2po; rep from \* to last 12 sts, k1, yo, k3, yo, ssk, yo, k4, ssk.

**Row 11** K2tog, \*yo, k5, yo, ssk, yo, k3, sk2po; rep from \* to last 12 sts, yo, k5, yo, ssk, yo, k3, ssk.

**Row 12** Purl.

## INSTRUCTIONS

### BACK

Using 3.5mm needles and Yarn B, cast on 120 (132: 144: 154: 166) sts.

Work in Single Rib until rib section meas 4cm, ending with a WS row.

Change to 4mm needles and Yarn A and work in st st until work meas 29 (29: 31: 33: 34)cm from cast-on edge, ending with a WS row.

### Shape Armhole

Cont in st st as set and cast off 5 (6: 7: 8: 9) sts at beg of next 2 rows. [110 (120: 130: 138: 148) sts]

Dec 1 st at each side of next 3 rows. [104 (114: 124: 132: 142) sts]

Work 1 row straight, then dec 1 st at each side of next (RS row) and every foll RS row until 90 (94: 102: 108: 116) sts rem.

Cont straight in st st as set until work meas 48 (50: 54: 57: 59)cm from cast-on edge, ending with a WS row.

### Shape Shoulders

Cast off 7 (7: 8: 9: 10) sts at beg of next 4 (2: 2: 4: 4) rows.

[62 (80: 86: 72: 76) sts]

Cast off 8 (8: 9: 10: 11) sts at beg of next 2 (4: 4: 2: 2) rows.

[46 (48: 50: 52: 54) sts]

Slip rem 46 (48: 50: 52: 54) sts onto holder.

### LEFT FRONT

Using 3.5mm needles and Yarn B, cast on 56 (62: 68: 74: 80) sts. Work in Single Rib until rib section meas 4cm, ending with a WS row.

Change to 4mm needles and Yarn A and work in st st until work meas 20 (21: 23: 23: 24)cm from cast-on edge, ending with a WS row. \*\*

### Shape V-neck

**Next row (RS)** K to last 4 sts, k2tog, k2. [1 st dec]

Work 3 rows straight in st st.

Rep last 4 rows a further 18 (19: 20: 22: 23) times and **AT THE SAME TIME** when work meas 29 (29: 31: 33: 34)cm from cast-on edge and ending with a WS row, shape armhole as folls:

### Shape Armhole

Cont with V-neck shaping in st st as set and cast off 5 (6: 7: 8: 9) sts at beg of next row (RS row).

Work 1 row straight then dec 1 st at armhole edge of next 3 rows.

Work 1 row straight.

Dec 1 st at armhole edge of next row (RS row).

Rep last 2 rows a further 6 (9: 10: 11: 12) times.

[22 (23: 26: 28: 31) sts]

Cont straight in st st as set until work meas same as Back to shoulder from cast-on edge, ending with a WS row.

### Shape Shoulder

Cast off 7 (7: 8: 9: 10) sts at beg of next 2 (1: 1: 2: 2) RS row(s).

[8 (16: 18: 10: 11) sts]

Cast off 8 (8: 9: 10: 11) sts at beg of next 1 (2: 2: 1: 1) RS row(s).

### RIGHT FRONT

Work as given for Left Front to \*\*.

### Shape V-neck

**Next row (RS)** K2, ssk, k to end. [1 st dec]

Work 3 rows straight in st st.

Rep last 4 rows a further 18 (19: 20: 22: 23) times and **AT THE SAME TIME** when work meas 29 (29: 31: 33: 34)cm from cast-on edge and ending with a RS row, shape armhole as folls:

### Shape Armhole

Cont with V-neck shaping in st st as set and cast off 5 (6: 7: 8: 9) sts at beg of next row (WS row).

Dec 1 st at armhole edge of next 3 rows.

Work 1 row straight.

Dec 1 st at armhole edge of next row (RS row).

Rep last 2 rows a further 6 (9: 10: 11: 12) times.

[22 (23: 26: 28: 31) sts]

Cont straight in st st as set until work meas same as Back to shoulder, meas from cast-on edge, ending with a RS row.

### Shape Shoulder

Cast off 7 (7: 8: 9: 10) sts at beg of next 2 (1: 1: 2: 2) WS row(s).

[8 (16: 18: 10: 11) sts]



Cast off 8 (8: 9: 10: 11) sts at beg of next 1 (2: 2: 1: 1) WS row(s).

### SLEEVE (MAKE 2)

Using 3.25mm needles and Yarn B, cast on 56 (59: 62: 65: 69) sts. Work in g st until Sleeve meas 2cm, ending with a WS row.

Change to 4mm needles.

### Sizes S and M only

**Next row (RS)** K3 (4: -: -: -:), \*k1, kfb; rep from \* to last 3 sts, k3. [81 (85: -: -: -:) sts]

### Size L only

**Next row (RS)** Kfb, \*k1, kfb; rep from \* to last st, kfb. [- (: 94: -: -:) sts]

### Sizes XL and XXL only

**Next row (RS)** Kfb, \*k1, kfb; rep from \* to last - (: -: 0: 2) sts, kfb - (: -: 0: 2) times. [- (: -: 98: 105) sts]

### All sizes

**Next row (WS)** Purl.

Work in Lace Patt from written instructions or foll Chart on p2:

**Row 1 (RS)** K1 (3: 1: 3: 0), (Lace Patt Row 1 across 79 (79: 92: 92: 105) sts, k1 (3: 1: 3: 0).

*Note: all sts are purl on next row.*

**Row 2 (WS)** P1 (3: 1: 3: 0), (Lace Patt Row 2 across 79 (79: 92: 92: 105) sts, p1 (3: 1: 3: 0).

These 2 rows set position of Lace Patt with 1 (3: 1: 3: 0) edge st(s) at both sides worked in st st, and central 79 (79: 92: 92: 105) sts worked in Lace Patt.



Cont in st st and Lace Patt as set, rep 12-row Lace Patt until Sleeve meas 35 (35: 36: 37: 37)cm from cast-on edge, ending with a WS row.

#### Shape Sleeve Cap

Cont in st st and Lace Patt as set and cast off 5 (6: 7: 8: 9) sts at beg of next 2 rows. [71 (73: 80: 82: 87) sts]

Dec 1 st at each end of next 4 rows. [63 (65: 72: 74: 79) sts]

Dec 1 st at each end of next row, and every foll alt row for a total of 12 (12: 14: 14: 16) rows. [51 (53: 58: 60: 63) sts]

Work 2 (6: 10: 10: 8) rows straight.

Dec 1 st at each end of next row, and every foll alt row for a total of 12 (14: 14: 16: 18) rows. [39 (39: 44: 44: 45) sts]

Dec 1 st at each end of next 4 rows. [31 (31: 36: 36: 37) sts]

Cast off 10 (10: 12: 12: 12) sts at beg of next 2 rows.

[11 (11: 12: 12: 13) sts]

Cast off rem sts.

#### BORDER

Join both Shoulder seams.

Using 3.5mm needles and Yarn B, with RS facing and starting at hem of Right Front, pick up and k46 (49: 53: 53: 56) sts along straight section, pick up and k72 (74: 79: 86: 89) sts along diagonal to Shoulder, k across 46 (48: 50: 52: 54) sts for Back from holder, pick up and k72 (74: 79: 86: 89) sts along diagonal, and finally pick up and k46 (49: 53: 53: 56) sts along straight section of Left Front. [282 (294: 314: 330: 344) sts]

Work in Single Rib starting from Row 2 (WS row) for 1.5cm, ending with a WS row.

#### Buttonhole Row

**Next row (RS)** Work in Single Rib for 2 sts, k2tog, yo, \* work in Single Rib for 8 (9: 10: 10: 8) sts, k2tog, yo; rep from \* 3 (3: 3: 3: 4) more times, work in Single Rib to end.

Cont in Single Rib until neckband meas 3cm, ending with a RS row.

Cast off in rib pattern on WS.

#### ASSEMBLY

Sew sleeve caps into armholes. Sew sleeve and side seams. Attach buttons.

#### TO FINISH

Weave in ends and block to measurements.



# ABBREVIATIONS

[ ]	number of sts on a given row/round
alt	alternate
beg	begin(s)/beginning
cont	continue(d)/continuing
dec	decrease(s)
dpn(s)	double pointed needle(s)
fol(s)	follow(s)/following
g st	garter stitch
inc	increase(s)
k	knit
k2tog	knit 2 sts tog to dec by 1 st: insert needle kwise into first 2 sts and knit them tog (right leaning dec)
kfb	knit front and back to inc by 1 st: insert needle kwise into next st; knit as normal but don't slip st from needle, instead bring needle around to back and knit through back loop of same st
kwise	knitwise
meas	measure(s)/measuring
p	purl
patt	pattern
p2tog	purl 2 sts tog to dec by 1 st: insert needle pwise into first 2 sts and purl them tog (right leaning dec)
pm	place stitch marker
pwise	purlwise

rem	remain(s)/remaining
rep	repeat(s)
RS	right side
sk2po	slip 1, knit 2 tog, pass slipped stitch over
skpo	slip 1, knit 1, pass slipped st over
sm	stitch marker(s)
ssk	slip slip knit to dec by 1 st: slip 1 st kwise, slip next st kwise, insert left needle into front of 2 slipped sts and knit them tog (left leaning dec)
st st	stocking stitch: RS knit, WS purl
st(s)	stitch(es)
tbl	through back loop(s)
tog	together
WS	wrong side
yo	yarn over

## Repeat formats

\*.....; **rep from \* x more times/to end** work instructions after \* and then repeat that section as stated; the same applies to any number of asterisks: \*\*.....; rep from \*\* etc.

(.....) **x times/to end** work instructions between brackets the *total* number of times stated



## TIPS FOR MERINO CARE

Simy's Studio Book contains patterns for our gorgeous new yarns. Treat these hand-dyed, high quality natural fibres gently. Merino may be less hardwearing than synthetic blends, especially for items worn often, such as socks, but has the advantage of requiring less frequent washing. Use a pH-neutral mild detergent and turn inside out to help prevent wear. Find out more at: [simysstudio.com](https://simysstudio.com)

## ABOUT SIMY'S STUDIO

At Simy's Studio, we understand that crafting is not just a hobby; it's an enriching lifestyle that nurtures passion and ignites the imagination. Our brand is built upon the belief that crafting goes beyond the finished product – it's an extraordinary journey of self-discovery and a gateway to exploring ideas.

A curated selection of patterns invites you to explore the wonderful possibilities Simy's Studio Yarn has to offer.



@simysstudio



simysstudio.com



@simysstudio



simys-studio

## SIMY'S STUDIO

Mercuriusweg 16  
9482WL Tynaarlo  
The Netherlands

For all enquiries: [simysstudio.com](https://simysstudio.com)

For errata information: [simysstudio.com/en/errata](https://simysstudio.com/en/errata)

With thanks to Wysing Arts Centre

Phil Root & Giles Round, *The Grantchester Pottery*, 2014

Folke Kobberling and Martin Kaltwasser, *Amphis*, 2008

Powered by



**De Bondt**  
INSPIRING CREATIVITY

All rights reserved. No part of this pattern may be copied or reproduced without written permission of the publisher. You may not distribute or sell electronic or paper copies of this pattern. For personal non-commercial use only.