

PRETTY LITTLE THINGS



Winter Wonderland

KNIT, CRAFT AND CROCHET

Special delivery!

*Crochet colourwork
is easy using this clever
C2C technique*



WINTER WONDERLAND

The most joyous season of festivities and decoration has begun, and we can't help but cross our fingers and hope for a white Christmas here in the Netherlands. There's nothing that boosts my spirits more than opening my curtains on a frosty December morning to behold a breathtaking winter wonderland right outside my window. This special time of visiting loved ones, enjoying scrumptious holiday dinners, and decorating Christmas trees is truly topped off by a sprinkling of snow, no matter where in the world we live. With these six multicraftal projects, we hope that the spirit of this magical season flows into yours and your loved ones' homes. Happy holidays!

Scheepjes Creative Director *Sunny*

CHRISTMAS TREE & TRUCK HANGING

By Jessica Amey

Gauge/Tension

Tension is not critical for this project, but different measurements may result in different yarn amounts needed

Measurements

Approx. 71 x 49cm

Abbreviations (UK Terms)

[] number of sts on a given row

beg beginning

ch(s) chain(s) or chain stitch(es)

ch-1 sp(s) chain 1 space(s): number denotes number of chains in chain space

cont continue

htr half treble crochet

prev previous

rep repeat

RS right side

ss slip stitch

st(s) stitch(es)

WS wrong side

yoh yarn over hook

(.....) x times/to end work instructions between brackets the total number of times stated

Pattern Notes

Hanging uses corner-to-corner (C2C) crochet method: work rows diagonally in blocks of 2 ch and 3 htr. Each row is increased by one block, beg with one block in bottom right corner and reaching 45 blocks in Row 45. After Row 45, cont working blocks across entire diagonal edge until end of Row 65, then decrease each row by one block.

Turn work after each row.

PRETTY LITTLE THINGS



SHOPPING LIST

Pretty Little Things shopping lists can be cut out and taken along to your local yarn store when picking up supplies for your projects!

CHRISTMAS TREE & TRUCK HANGING

Scheepjes Colour Crafter

(100% Premium Acrylic
(Anti Pilling); 100g/300m)

Yarn A: 1019 Texel x 2 balls

Yarn B: 1063 Rotterdam x 1 ball

Yarn C: 1054 Haarlem x 1 ball

Yarn D: 1826 Franeker x 1 ball

Yarn E: 1002 Ede x 1 ball

Yarn F: 1005 Barneveld x 1 ball

Yarn G: 1711 Leeuwarden x 1 ball

Yarn H: 1123 Roermond x 1 ball

Yarn I: 1246 Maastricht x 1 ball

3.5mm crochet hook

8mm diameter x 1m wooden dowel
(cut to width of finished Hanging)





NOTES

Use this space to write your pattern notes!

TRANSFORM A DRAWING INTO A C2C PATTERN

A **simple drawing** in colour blocks is all you need to create a C2C design. Colour in a sheet of **graph paper** (in the style of the schematic on page 5), then follow the steps of this pattern!

Made a Pretty Little Thing from one of our issues? We'd love to see it! Share on social media using

#ScheepjesPrettyLittleThings



See Schematic 1: Block Colours for all colour changes. Change yarn colour in last yoh of last htr of prev block as follows: yoh, insert hook in ch-2 sp, yoh, pull up loop, yoh in new colour, draw through all loops. Do not fasten off yarn if colour is needed for next row: leave strand at WS of work ready to pick up when required. Read schematic diagonally starting in bottom right corner. Odd numbered rows are read from right down to left, and even numbered rows from left up to right. Each square of schematic represents one block of sts in same colour.

Instructions

INCREASE SECTION

Row 1 (RS) With Yarn F, ch5, 1htr in third, fourth and fifth ch from hook, turn. [1 block]

Row 2 (WS) Ch5, 1htr in third, fourth and fifth ch from hook, rotate block just made 90°, 1ss in ch-2 sp at beg of adjoining block from Row 1, ch2, 3htr in same ch-2 sp, turn. [2 blocks]

Row 3 Ch5, 1htr in third, fourth and fifth ch from hook, rotate block just made, (1ss in ch-2 sp at beg of adjoining block from Row 2, ch2, 3htr in same ch-2 sp) twice. [3 blocks]

Row 4 Ch5, 1htr in third, fourth and fifth ch from hook, rotate block just made, (1ss in ch-2 sp at beg of adjoining block from prev row, ch2, 3htr in same ch-2 sp) twice, changing to Yarn A in last htr of prev block, 1ss in ch-2 sp of next adjoining block from prev row, ch2, 3htr in same ch-2 sp. [4 blocks]

Row 5 Ch5, 1htr in third, fourth and fifth ch

from hook, rotate block just made, 1ss in ch-2 sp at beg of adjoining block from prev row, ch2, 3htr in same ch-2 sp, changing to Yarn F in last htr of prev block, (1ss in ch-2 sp of next adjoining block from prev row, ch2, 3htr in same ch-2 sp) 3 times. [5 blocks]

Cont to work colour changes in same way for subsequent rows as per Schematic 1.

Row 6 Ch5, 1htr in third, fourth and fifth ch from hook, rotate block just made, (1ss in ch-2 sp at beg of adjoining block from prev row, ch2, 3htr in same ch-2 sp) to end. [6 blocks]

Rows 7-45 Rep Row 6. [45 blocks]

STRAIGHT SECTION

Work blocks across entire diagonal edge without increasing or decreasing.

Row 46 Ch5, 1htr in third, fourth and fifth ch from hook, rotate block just made, (1ss in ch-2 sp at beg of adjoining block from prev row, ch2, 3htr in same ch-2 sp) to last block of prev row, ss in ch-2 sp at beg of last block of prev row. [45 blocks]

Row 47 1ss in each of next 3 htr of last block of prev row, 1ss in ch-2 sp at beg of same block, ch2, 3htr in same ch-2 sp, (1ss in ch-2 sp at beg of next adjoining block from prev row, ch2, 3htr in same ch-2 sp) to end.

Rows 48-65 Rep Rows 46-47.

DECREASE SECTION

Row 66 1ss in each of next 3 htr of last block of prev row, 1ss in ch-2 sp at beg of same block, ch2, 3htr in same ch-2 sp, (1ss in ch-2 sp at beg

of next adjoining block from prev row, ch2, 3htr in same ch-2 sp) to last block of prev row, 1ss in ch-2 sp at beg of last block of prev row.

[44 blocks]

Rows 67-108 Rep Row 66. [2 blocks]

Row 109 1ss in each of next 3 htr of last block of prev row, 1ss in ch-2 sp at beg of same block, ch2, 3htr in same ch-2 sp, 1ss in ch-2 sp at beg of next adjoining block from prev row. [1 block] Fasten off.

TO FINISH

Weave in all ends and block gently.

ATTACH DOWEL

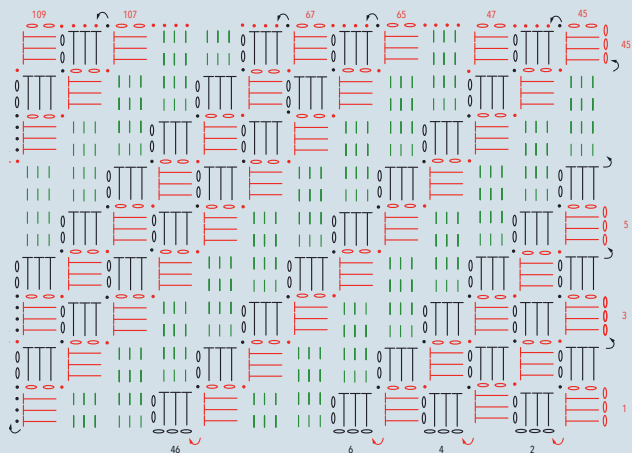
With RS facing and beg in top right corner, join Yarn A with ss to first ch-2 sp, then ch1.

Hold dowel parallel to top edge of Hanging and work sts around dowel to encase it as follows: 1dc in same ch-2 sp as ss, (2dc in next block (where sts are worked is not critical, as long as they are evenly placed), 1dc in next ch-2 sp) to end, fasten off.

Weave in ends.

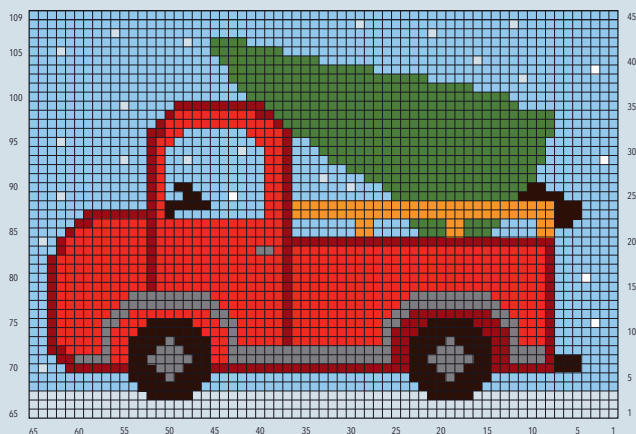


Crochet Chart 1: C2C Stitch Pattern



Key ○ ch • ss | htr ↪ starting point of next row ||| cont as prev

Schematic 1: Block Colours



Key

- | | | |
|---|--|---|
| ■ Yarn A: 1019 Texel | ■ Yarn B: 1063 Rotterdam | ■ Yarn C: 1054 Haarlem |
| ■ Yarn D: 1826 Franeker | ■ Yarn E: 1002 Ede | ■ Yarn F: 1005 Barneveld |
| ■ Yarn G: 1711 Leeuwarden | ■ Yarn H: 1123 Roermond | ■ Yarn I: 1246 Maastricht |

Dashing through the snow

*The reindeer is worked
from the reverse to
give a 3D effect*



REINDEER PUNCH PATCH

By Liz Barraclough



Measurements

11 x 8cm

Abbreviations

∅ diameter
RS right side
st(s) stitch(es)
WS wrong side

Pattern Notes

Patch features reindeer design worked from WS to create 3D looped sts on RS. Background is worked from RS to create contrasting flat sts. Patch is removed from hoop once complete and stitched to felt backing.

Always hold yarn loosely over your hand while punch needling, ensuring no tension. When there is tension, loops can come out as you work. Insert needle through fabric as far as possible and carefully remove, keeping needle tip on surface of fabric. Move needle a few mm and insert/remove needle as previously.

Use largest punch needle from Opry set for this project (item PN-103).

Instructions

TRANSFERRING DESIGN

Step 1 Tape template (p8) to window or light box, position fabric on top and trace design onto WS of fabric. Turn fabric and retrace oval border onto RS.

Step 2 Clamp fabric into hoop and screw tight to secure, making sure not to distort oval shape.

LOOPED STITCHES

Step 3 Set st length to 5. With WS facing and Yarn A, work outline of nose keeping yarn tail at WS. Work in a spiral to fill in nose.

Step 4 Set st length to 3 and continue to work red sweater stripes. Change to Yarn B and work green sweater stripes.

Maintain st length 3 throughout and continue to fill in areas working in a spiral.

Step 5 With Yarn C, fill in cheeks and inner ears.

Step 6 With Yarn D, fill in lower face.

Step 7 With Yarn E, fill in upper face, leaving small gaps for eyes.

Step 8 With Yarn F, fill in antlers.

Step 9 With Yarn G, work shape of mouth.

FLAT STITCHES

Step 10 Turn hoop so RS is facing (looped sts), and with Yarn H, fill in background.

Note: pull yarn tail to WS after inserting needle through fabric for first time.



PRETTY LITTLE THINGS



SHOPPING LIST

REINDEER PUNCH PATCH

Scheepjes Catona

(100% Mercerised Cotton; 10g/25m)

Yarn A: 516 Candy Apple x 1 ball

Yarn B: 205 Kiwi x 1 ball

Yarn C: 523 Sweet Mandarin x 1 ball

Yarn D: 130 Old Lace x 1 ball

Yarn E: 157 Root Beer x 1 ball

Yarn F: 162 Black Coffee x 1 ball

Yarn G: 110 Black x 1 ball

Yarn H: 173 Bluebell x 1 ball

Opry punch needle set
(item no. WDPN001)

∅ 15cm non-slip hoop for punch needling

20 x 20cm DMC Unifil 11 28ct
Evenweave fabric
(item no. DM542A-Blanc)

1 x 9g tube Toho glass beads silver
(item no. TH8-0029)

2 x ∅ 4mm safety eyes

1 sheet blue felt (item no. 10100-052)

Prym Fray Check (item no. 968.020)

Sewing needle + thread
Fine tip permanent marker



NOTES

Use this space to write your pattern notes!

BEADS

Step 11 Using photo as guide for placement, st beads to background and attach safety eyes.

TO FINISH

Step 12 Remove fabric from hoop and trim excess to 1.5cm, making a few snips around curves. Apply Prym Fray Check or a suitable craft glue to cut edges and leave to dry.

Step 13 Trace oval border from design onto felt and cut it out. Fold excess fabric of punched patch to WS and whip st felt piece over the top, neatly covering WS.

Punch Needle Template



HOW TO DISPLAY A HANDMADE PATCH

There are many other ways to show off your festive punch needle creation. Check out our suggestions for ideas of how to use your reindeer patch (and you'll finish off some of those leftover yarns, too).

Wearable accessory

Transform this patch into a cute brooch by stitching a brooch pin or safety pin to the centre of the felt on the reverse, using matching thread. Velcro tape can also be used for a more child-friendly fastening.
HKM Sew-on Velcro tape (item no. 10204)

Festive ornament

Make one, two or more Reindeer Punch Patches and decorate your Christmas tree! Simply stitch a looped length of ribbon, yarn, or crocheted chain to the top.

Decorative patch

Use to personalise a craft bag, a backpack, pencil case, or clothing! Attach using Velcro, Bondaweb (self-adhesive or iron-on) or blanket stitch the patch on with thread.
DMC Stranded Cotton embroidery thread (item no. 117MC)



'Tis the season for... hot chocolate!

2 tbsp
unsweetened
cocoa powder

2 tbsp
sugar

optional
miniature
marshmallows

a splash of
vanilla
extract

50g
chocolate
chips

500ml
milk

a dollop
whipped
cream

optional
orange
zest

Method (makes 2 mugs)

Step 1 Add milk to a saucepan over gentle heat and whisk in cocoa powder and sugar.

Step 2 Stirring gently, heat until warm and then add chocolate chips (leave a few for topping) and zest, if using.

Step 3 Add vanilla extract (or orange or mint if you prefer) and serve with a dollop of whipped cream and some mini marshmallows.



Your hot chocolate will taste delicious in our Scheepjes 165th Anniversary **limited edition mug** (item no. 69503)! Turn to page 16 to make a fun mug cosy for a Christmas gift.

Cosy in the cold



*A perfect make
for you and
your mini-me!*

WINTER WOOLLIES HOOD

By Fran Morgan

Gauge/Tension

18 sts and 24 rows to measure 10 x 10cm over garter st using 4.5mm needles

Measurements (cm)

Size	Child	Adult
Cowl Circumference	50	60
Full Length - Hem to Top Seam	37.5	49
Cowl Depth	10	15
Hood Depth	27.5	34

Abbreviations

[] number of sts on a given row/round

k knit

k2tog knit 2 sts together to decrease by 1 st: insert needle wise into first two sts and knit them together

kwise knitwise

m stitch marker

p purl

pm place stitch marker

rep repeat

RS right side

skpo slip 1, knit 1, pass slipped st over

sm slip stitch marker

st(s) stitch(es)

WS wrong side

*.....; **rep from * x times/to end** work

instructions after * and then repeat that section as stated: the same applies to any number of asterisks:

**.....: rep from ** etc.

Pattern Notes

Cowl is worked in one piece, bottom up and in garter stitch: alternate k and p rounds when working in the round and k every row when working flat. Neck section is worked in the round and Hood section is worked back and forth in rows. Hood is shaped at the crown and features edging created by slipped 3 sts at beginning of each Hood Section row. Use three-needle cast off method to join top of Hood (see instructions below).

Special Abbreviations

three-needle cast off method *using spare needle, insert needle in first st on front needle and then in first st on back needle and k these 2 sts together (1 st is now on spare needle)*; **rep from * to * once more (2 sts on spare needle), using front needle, insert tip in first (bottom) st on spare needle and lift it over the top st to cast off**; rep from ** to ** until all sts are cast off



PRETTY LITTLE THINGS



SHOPPING LIST

WINTER WOOLLIES HOOD

Scheepjes Softy

(75% Polyester, 25% Nylon; 50g/145m)

Yarn A: 475 x 2 (2) balls

4.5mm circular needles 40cm

4.5mm spare knitting needle for cast off

1 x stitch marker

BEST FOR SENSITIVE SKIN

All of Scheepjes' synthetic yarns are **hypoallergenic**, making them a sensible choice for those with sensitive skin. They are especially **sued to little ones**, and also benefit from being super soft and light weight.



NOTES

Use this space to write your pattern notes!

TIRED OF COUNTING?

No matter how good your crafting skills are, counting stitches can still be a chore. Using **stitch markers** makes life much easier!

Read more about them on our

Creative Director's blog:
bit.ly/knit-st-markers

Instructions

NECK SECTION

With 4.5mm circular needles, cast on 90 (108) sts. Join to work in the round taking care not to twist sts. Pm for beg of round and sm at start of each new round.

Round 1 Knit. [90 (108) sts]

Round 2 Purl.

Rep Rounds 1-2 until work measures approx. 10 (15)cm.

HOOD SECTION

Split for Hood Opening:

Row 1 (RS) Slip 3 sts, k to end, remove m.

Row 2 (WS) Slip 3 sts, k to end.

Next row Slip 3 sts, k to end.

Rep previous row until Hood measures approx. 15 (18)cm from split, ending after a RS row.

Next row (WS) Slip 3 sts, k until 45 (55) sts left on right needle, pm, k to end.

Shaping Section

Row 1 (RS) Slip 3 sts, k to 2 sts before m, k2tog, sm, skpo, k to end.

Row 2 (WS) Slip 3 sts, k to end.

Rep last 2 rows until 60 (70) sts remain.

Join Top of Hood


With WS facing, fold Cowl at marked point so the 30 (35) sts that are on either side of top seam are parallel to each other on the needle tips.

Cast off all sts using three-needle cast off method (see Pattern Notes).

TO FINISH

Weave in all ends.





*A great project
for experimenting
with colourwork
techniques!*

Little festive favourites



RED ROBIN INTARSIA DECORATION

By Cher Marcus

Gauge/Tension

Tension is not critical for this project: yarn amount is sufficient for three or more Robins

Measurements

Height approx. 7.5cm

Abbreviations

[] number of sts on a given row

k knit

k15 A knit 15 sts in Yarn A: number denotes number of sts to knit and letter denotes yarn colour

k2tog knit 2 sts together to decrease by 1 st: insert needle knitwise into first two sts and knit them together

kfb knit front and back to increase by 1 st: insert needle into next st, knitwise: knit as normal but don't slip st from needle, instead bring needle around to back and knit through back loop of same st

p purl

p14 A purl 14 sts in Yarn A: number denotes number of sts to knit and letter denotes yarn colour

p2tog purl 2 sts together: insert needle purlwise into first 2 sts and purl them together (right leaning decrease)

pfb purl front and back to increase by 1 st: insert needle into next st, pwise, purl as normal but don't slip st from needle, instead bring needle over and around to back of work and purl through back loop of same st

rep(s) repeat(s)

RS right side

st(s) stitch(es)

WS wrong side

(.....) x times work instructions between brackets the total number of times stated

Pattern Notes

Robin is worked flat in one piece and in stocking st: RS knit, WS purl. Wing and Beak sections are worked separately. Use intarsia method to change colours mid-row for Robin's breast and head: separate Yarns A and C into two balls each to use in corresponding sections of colour in Rows 10-24 and Rows 27-31. Use stranded colourwork method and small amounts of Yarn B and C when working Rows 25-26. Remember to twist yarns together at colour changes to avoid any holes.

Instructions

With Yarn A, cast on 7 sts.

Row 1 (WS) P to end.

Row 2 (RS) K1, (kfb) 5 times, k1. [12 sts]

Rows 3, 5 and 7 P to end.

Row 4 K1, (kfb) 3 times, k4, (kfb) 3 times, k1. [18 sts]

Row 6 K1, (kfb) twice, k3, (kfb) 6 times, k3, (kfb) twice, k1. [28 sts]

Row 8 K1, (kfb) twice, k7, kfb, k6, kfb, k7, (kfb) twice, k1. [34 sts]

Row 9 P to end.

Continue using intarsia method: join Yarn B and second ball of Yarn A.

Row 10 K15 A, k4 B, k15 A (with second ball).

[34 sts]

Row 11 P14 A, p6 B, p14 A.

Row 12 K13 A, k8 B, k13 A.

Row 13 P12 A, p10 B, p12 A.

Row 14 Cast off 8 sts, k until 4 sts on right needle in Yarn A, k10 B, k12 A. [26 sts]

Row 15 Cast off 8 sts, p until 4 sts on right needle in Yarn A, p10 B, p4 A. [18 sts]

Row 16 K4 A, k10 B, k4 A.

Row 17 P4 A, p10 B, p4 A.

Rows 18-19 Rep Rows 16-17.

Break Yarn A and join Yarn C.

Row 20 K4 C (with first ball), k10 B, k4 C (with second ball).

Row 21 P4 C, p10 B, p4 C.

Row 22 Rep Row 20.

Row 23 P5 C, p8 B, p5 C.

Row 24 K6 C, k6 B, k6 C.

Use stranded colourwork method in Rows 25-26.

Row 25 P6 C, p2 B, p2 C, p2 B, p6 C.

Row 26 K6 C, k1 B, k4 C, k1 B, k6 C.

Break Yarn B and continue with Yarn C only.

Row 27 (P2tog) twice, p10, (p2tog) twice. [14 sts]

Row 28 K2tog, k3, (k2tog) twice, k3, k2tog. [10 sts]

Row 29 P2tog, p6, p2tog. [8 sts]

Row 30 K2tog, k4, k2tog. [6 sts]

Row 31 P2tog, p2, p2tog. [4 sts]

Break yarn and thread tail through remaining sts, pull tight and fasten off.

WING (MAKE 2)

With Yarn C, cast on 5 sts.

Row 1 (WS) P to end.

Row 2 (RS) Kfb, k3, kfb. [7 sts]

Row 3 P to end.

Row 4 K1, (kfb, k1) 3 times. [10 sts]

Row 5 Pfb, p8, pfb. [12 sts]

Rows 6-9 Begin with a k row, work 4 rows in stocking st.

Row 10 Cast off 2 sts, k to end. [10 sts]

Row 11 Cast off 2 sts, p to end. [8 sts]

Rows 12-15 Rep last 2 rows twice more. Fasten off.

BEAK

With Yarn C, cast on 6 sts.

Row 1 (WS) P to end.

Row 2 (RS) K2tog, k2, k2tog. [4 sts]

Row 3 (P2tog) twice. [2 sts]

Fasten off.

ASSEMBLY

Join row ends of Robin's body using mattress st, leaving gap at bottom for stuffing. Insert safety eyes 2 sts in from beginning of Yarn B section and 1 row below head (use photo as guide). Stuff and close seam in base.

Oversew Beak row ends and attach to centre front of head. Attach Wings, placing cast-on edge level with start of Yarn B section.

TO FINISH

Weave in all ends.

With Yarn C, make a 30cm twisted cord and thread through centre back of Robin's head, finding a good balance point for hanging.

PRETTY LITTLE THINGS



SHOPPING LIST

RED ROBIN INTARSIA DECORATION

Scheepjes Stone Washed

(78% Cotton, 22% Acrylic: 50g/130m)

Yarn A: 801 Moon Stone x 1 ball

Yarn C: 822 Brown Agate x 1 ball

Scheepjes River Washed

(78% Cotton, 22% Acrylic: 50g/130m)

Yarn B: 961 Mersey x 1 ball

3mm knitting needles

2 x 5mm black safety eyes
(item no. 5633-05-000)

Polyester stuffing
(item no. 240130-10)

Save your yarn ends to stuff smaller projects like these!



PRETTY LITTLE THINGS



NOTES

Use this space to write your pattern notes!

Share a little happiness...

*Try out tapestry
crochet with our
easy project!*



POLAR BEAR MUG COSY

By Elise Verra

Gauge/Tension

13 sts and 14 rows to measure 5 x 5 cm over dc using a 2mm hook

Measurements

24cm width x 9cm height

Abbreviations

[] number of sts on a given round/row

ch(s) chain(s) or chain stitch(es)

ch-1 sp(s) chain 1 space(s): number denotes number of chains in chain space

ch-sp(s) chain space(s)

cont continue

dc double crochet

dc2tog double crochet 2 together to decrease by 1 st: (insert hook in next st, yoh, pull up loop) twice, yoh, draw through all loops

dcA work dc sts in Yarn A

dcB work dc sts in Yarn B

dcC work dc sts in Yarn C

mr magic ring

rep repeat

RS right side(s)

ss slip stitch

st(s) stitch(es)

tog together

WS wrong side

yoh yarn over hook

(.....) x times work instructions in brackets the total number of times stated

Pattern Notes

Mug Cosy features two polar bears and is worked back and forth in rows using tapestry crochet technique: turn work after each row. Carry unused yarn along as you work, encasing it inside sts of working yarn. Change yarn colour in last yoh of previous st as follows: insert hook in st, yoh, pull up loop, yoh in new colour, draw through all loops. Beginning chs do not count as sts throughout. Work chs in same yarn colour as previous dc. Scarves and Ties are worked separately and added to Mug Cosy, then amigurumi Snowballs are stitched to ends of Ties. Thread Ties through ch-sps at top and bottom of Mug Cosy so it can be secured when placed over a mug. See Stitch Chart 1: Stitch Pattern for polar bear design. Read chart from bottom up and left to right for WS rows, and from right to left for RS rows.

Instructions

MUG COSY

With Yarn A, ch61.

Row 1 (WS) (eyelet row) 1dcA in second ch from hook (skipped 1 ch does not count as st), ch2, skip 2 sts, (8dcA, 11dcB, 8dcA) twice, ch2, skip 2 sts, 1dcA in last st, turn. [60 dc, 2 ch-2 sps]

Row 2 (RS) Ch1 (does not count as st throughout), 1dcA, 2dcA in ch-2 sp, (8dcA, 11dcB, 8dcA) twice, 8dcA, 2dcA in ch-2 sp, 1dcA in last dc, turn. [60 dc]

Rows 3-8 Ch1, 3dcA, (8dcA, 11dcB, 8dcA) twice, 3dcA.

Row 9 Ch1, 3dcA, (9dcA, 9dcB, 9dcA) twice, 3dcA.

Row 10 Ch1, 3dcA, (10dcA, 7dcB, 10dcA) twice,

PRETTY LITTLE THINGS



SHOPPING LIST

POLAR BEAR MUG COSY

Scheepjes Catona

(100% Mercerised Cotton: 50g/125m)

Yarn A: 510 Sky Blue x 1 ball

Yarn B: 105 Bridal White x 1 ball

Scheepjes Catona

(100% Mercerised Cotton: 25g/67.5m)

Yarn C: 408 Old Rose x 1 ball

Yarn D: 192 Scarlet x 1 ball

Yarn E: 110 Jet Black x 1 ball

2mm crochet hook

Small amount of stuffing for Snowballs





NOTES

Use this space to write your pattern notes!



IN THE MOOD FOR MORE
FESTIVE MAKES?

Fill your home with crocheted treats! This adorable, decorative **gingerbread man** is a perfect project for the weekend. Get your hands on the **FREE pattern** via our

Creative Director's blog:
bit.ly/simys-gingerbread-pattern

3dcA.

Row 11 Rep Row 9.

Join Yarn C just before Yarn B section and fasten off just after Yarn B section twice.

Row 12 Ch1, 3dcA, (9dcA, 1dcB, 1dcC, 5dcB, 1dcC, 1dcB, 9dcA) twice, 3dcA.

Cont with Yarns A and B only.

Rows 13-15 Rep Row 9.

Row 16 Rep Row 10.

Row 17 Rep Row 9.

Row 18 Ch1, 3dcA, (9dcA, 2dcB, 5dcA, 2dcB, 9dcA) twice, 3dcA.

Fasten off Yarn B.

Cont with Yarn A.

Rows 19-21 Ch1, 60dc.

Row 22 (eyelet row) Ch1, 2dc, ch2, skip 2 sts, (3dc, ch2, skip 2 sts) to last st, 1dc. [36 dc, 12 ch-2 sps]

Row 23 Ch1, 1dc, 2dc in ch-2 sp, (3dc, 2dc in ch-2 sp) to last 2 sts, 2dc, turn. [60 dc]

Round 24 (RS) Ch1, 59dc, 3dc in last st, rotate work 90 degrees to work in row ends, 1dc in each row end to row end of Row 1, fasten off Yarn A, join and cont with Yarn B, 3dc in row end of Row 1, rotate work 90 degrees to work in opposite side of foundation ch, 1dc in each st to end, rotate work 90 degrees to work in row ends, 3dc in row end of Row 1, fasten off Yarn B, join and cont with Yarn A, 1dc in each row end to last row end, 3dc in last row end, ss to first dc to join. [173 dc]

Fasten off.

SCARF

Scarf is worked in rows and in two pieces. Do not

fasten off yarn after changing colour: carry yarn across WS for next row. Change colour in last yoh of previous dc.

Horizontal Piece (make 2)

With Yarn C, ch4.

Row 1 (RS) 1dc in second ch from hook (skipped 1 ch does not count as st), 2dc, turn. [3 dc]

Change to Yarn D.

Row 2 (WS) Ch1 (does not count as st throughout), 1dc in each st to end, turn. [3 dc]

Change to Yarn C.

Row 3 Ch1, 1dc in each st to end. [3 dc]

Cont to alternate Yarns D and C in same way.

Rows 4-8 Ch1, 1dc in each st to end. [3 dc]

Fasten off.

Vertical Piece (make 3)

Rep Rows 1-4 of Horizontal Piece, fasten off.

Weave in all ends.

UPPER TIE

With Yarn B and long yarn tail, ch90, fasten off leaving a long yarn tail.

Snowball (make 2)

With Yarn B, make mr.

Round 1 (RS) 6dc in mr. [6 dc]

Round 2 (RS) 2dc in each dc around. [12 dc]

Rounds 3-5 1dc in each dc around. [12 dc]

Stuff Snowball lightly.

Round 6 (Dc2tog) 6 times. [6 dc]

Fasten off and weave in ends.

LOWER TIE (MAKE 2)

With Yarn B, ch30.

Fasten off and weave in ends.



ASSEMBLY

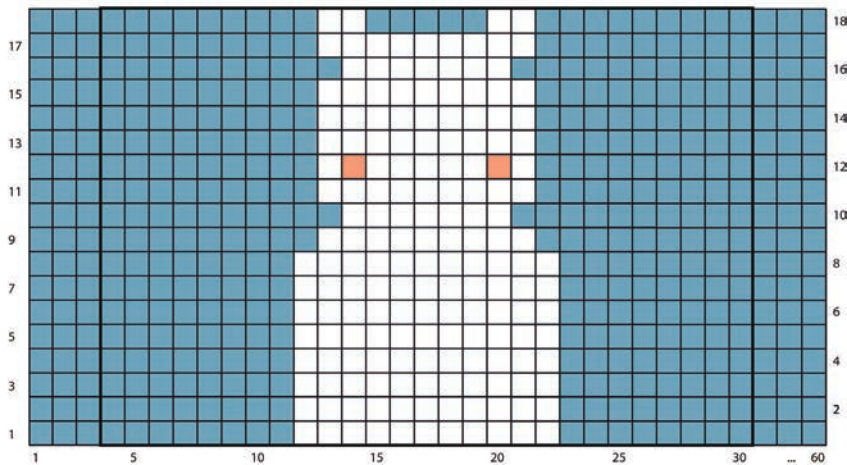
Use photo as guide: with RS facing, st pieces of Scarf together. Sew Scarves onto neck of each polar bear, stitching through Horizontal Piece only and leaving Vertical Piece hanging loose. Embroider nose onto each polar bear using straight sts, then embroider two eyes onto each polar bear using French Knots. For embroidery st instructions, see: bit.ly/simys-embroidery-tutorial. Weave Upper Tie through eyelets of Row 22 of Mug Cosy, then attach Snowballs to ends using yarn tails. Thread one of each Lower Tie through eyelets at bottom left and right corners of Row 1 of Mug Cosy.

TO FINISH

Weave in all remaining ends, then secure Mug Cosy to a mug using Ties.



Stitch Chart 1: Tapestry Crochet Pattern



Key

□ Patt rep ■ Yarn A □ Yarn B ■ Yarn C



Snow place like home



*See page 22 for
more fun ideas
for wreaths*

FESTIVE WINTER WREATH



By Lindsey Newsn

Measurements

Approx. 35cm diameter

Pattern Notes

Wreath is made by inserting handmade pompoms that are attached to floristry wire into front of polystyrene ring. Use photo as guide for placement. Several pompoms in three sizes are made: 25mm diameter for size small, 45mm for size medium and 65mm for size large. See pom-pom maker packaging for instructions on how to make pompoms: before removing pom-pom from tool, add an 18cm-long piece of wire inside groove of pom-pom maker and twist both ends together as close to centre of pom-pom as possible. If making pompoms using another method, wrap wire around centre of pom-pom and twist ends together.

Instructions

HILLS

Step 1 With Yarn A, make 5 large and 7 medium pompoms.

Step 2 With Yarn B, make 3 large and 7 medium pompoms.

Step 3 With Yarn C, make 3 large and 7 medium pompoms.

Step 4 With Yarn D, make 7 small pompoms.

SNOW

Step 5 With Yarn E, make 3 large and 21 medium pompoms.

TREES

Step 6 Make 1 medium pom-pom each in Yarns F, G and H.

Step 7 Trim these three pompoms into tree shapes by holding pom-pom by wire around centre and slowly cutting away yarn to create rough triangular/cone shapes with flat bases. Be careful not to cut central tie, to prevent pom-pom from unravelling.

ASSEMBLY

Cover top $\frac{2}{3}$ of Wreath with green pompoms and bottom $\frac{1}{3}$ with white pompoms. Start by inserting large pompoms evenly across Wreath and continue by filling in gaps with medium-sized pompoms. Lastly, add small green pompoms and trees. Where wires stick out at back after inserting pompoms, trim them to approx. 2-3cm then carefully bend and push end back into Wreath to secure.

TO FINISH

Use extra wire or a length of yarn to hang Wreath, or simply position it on a festive mantelpiece!



PRETTY LITTLE THINGS



SHOPPING LIST

FESTIVE WINTER WREATH

Scheepjes Colour Crafter

(100% Premium Acrylic
(Anti Pilling); 100g/300m)

Yarn A: 1009 Utrecht x 1 ball

Scheepjes Chunky Monkey

(100% Premium Acrylic
(Anti Pilling); 100g/116m)

Yarn B: 1826 Shamrock x 1 ball

Yarn C: 2014 Emerald x 1 ball

Yarn D: 2016 Fern x 1 ball

Yarn E: 1001 White x 2 balls

Yarn F: 1123 Garnet x 1 ball

Yarn G: 1390 Orchid x 1 ball

Yarn H: 1711 Deep Orange x 1 ball

25mm Clover pom-pom maker small
(item no. CL3127)

45mm Clover pom-pom maker medium
(item no. CL3124)

65mm Clover pom-pom maker large
(item no. CL3126)

65 x 18cm lengths floristry wire
25cm diameter polystyrene
ring with flat back



NOTES

Use this space to write your pattern notes!

ADD MORE WOW
TO YOUR WREATH!

If playing around with other yarns and colours isn't your style, why not try **decorating** your wreath with some tinsel, fairy lights, ribbons and other **haberdashery**?

Use some extra floristry wire to attach your embellishments.

Pom-pom playtime

Personalise your Festive Winter Wreath with different yarns and colours, and use up some leftover yarns from your stash in the process!

Chunky Monkey

Chunky Monkey yarn is great for making quick, fluffy pom-poms. Available in 93 shades, it's a great choice for colour play!



Stone Washed

Create a snow-flecked effect with our two-tone Stone Washed yarn, made from a cotton core with contrasting fluffy fibres.

Downtown

Self-stripping Downtown yarn is perfect for creating funky, multi-coloured pom-poms in a heartbeat!





PRETTY LITTLE THINGS



CHECK OUT THE SCHEEPJES WEBSITE
FOR MORE FUN PATTERNS!

© WWW.SCHEEPJES.COM

For errata information please visit:
www.scheepjes.com/en/errata

