

PRETTY LITTLE THINGS



★ ★ ★ SEA ★ ★ ★

CROCHET, EMBROIDER AND KNIT

WALLY WHALE

BY NIENKE JONGSTRA



SEA

Most of us have favourite tales of days at the coast, with memories of walks along the shore, seagulls flying overhead (or cheekily pinching ice creams!), freezing dips in the sea, and little boats bobbing away in the distance. Life revolves around the tides, with hours whiled away beachcombing for shells and searching for starfish in rockpools. Salt winds blow away the cobwebs, and, should we venture onto the water, strange and wonderful creatures keep us company. We might see a jellyfish – or even catch a glimpse of a whale on the horizon! Inspired by the big blue, our creative makes will bring echoes of blissful seaside days into your home.

Scheepjes Creative Director

Sindy
♡

WALLY WHALE

Gauge/Tension

Tension is not critical for this project, but different measurements may result in different yarn amounts needed

Measurements

14cm wide, 11cm high

Abbreviations (UK Terms)

[] number of stitches on a given round

blo back loop(s) only: insert hook under back loop only

ch(s) chain(s) or chain stitch(es)

ch-sp(s) chain space(s)

dc2tog double crochet 2 together to decrease by 1 st: (insert hook in next st, yoh, pull up loop) twice, yoh, draw through all loops

dc double crochet

flo front loop(s) only: insert hook under front loop only

m stitch marker

mr magic ring

rep repeat

RS right side

ss slip stitch(es)

st(s) stitch(es)

tr treble crochet

yoh yarn over hook

(.....) x times/to end work instructions between brackets the total number of times stated

Pattern Notes

Whale is worked using amigurumi method: work sts continuously in a spiral without closing each round with ss. Mark first st of each round with m, moving it up as you go.

PRETTY LITTLE THINGS



SHOPPING LIST

Pretty Little Things shopping lists can be cut out and taken along to your local yarn store when picking up supplies for your projects!

WALLY WHALE

Scheepjes Catona

(100% Mercerised Cotton; 50g/125m)

Yarn A: 527 Midnight x 1 ball

Scheepjes Catona

(100% Mercerised Cotton; 25g/62.5m)

Yarn B: 105 Bridal White x 1 ball

Yarn C: 110 Jet Black x 1 ball

2.5mm crochet hook

Polyester stuffing
(item no. 240130-10)

110mm wobble ball
(item no. 6556)

12cm length thin elastic cord
(item no. 50011)

1 x stitch marker



PRETTY LITTLE THINGS



NOTES

Use this space to write your pattern notes!

Instructions

BODY

With Yarn A, make mr.

Round 1 (RS) 6dc into ring. [6 dc]

Round 2 2dc blo in each st around. [12 dc]

Round 3 (1dc blo, 2dc blo in next st) 6 times. [18 dc]

Round 4 (1dc blo, 2dc blo in next st, 1dc blo) 6 times. [24 dc]

Round 5 (3dc blo, 2dc blo in next st) 6 times. [30 dc]

Round 6 (2dc blo, 2dc blo in next st, 2dc blo) 6 times. [36 dc]

Round 7 (5dc blo, 2dc blo in next st) 6 times. [42 dc]

Round 8 (3dc blo, 2dc blo in next st, 3dc blo) 6 times. [48 dc]

Round 9 48dc blo.

Round 10 (7dc blo, 2dc blo in next st) 6 times. [54 dc]

Round 11 (4dc blo, 2dc blo in next st, 4dc blo) 6 times. [60 dc]

Round 12 (9dc blo, 2dc blo in next st) 6 times. [66 dc]

Round 13 (5dc blo, 2dc blo in next st, 5dc blo) 6 times. [72 dc]

Round 14 72dc blo.

Round 15 (11dc blo, 2dc blo in next st) 6 times. [78 dc]

Rounds 16-31 78dc blo.

Round 32 78dc blo.

Round 33 (3dc, ch1, skip 1 st, 1dc, ch1, skip 1 st) 13 times, 1ss. [52 dc, 26 ch-sps]

Fasten off.

Change to Yarn B.

Working in flo of dc sts from Round 31 **in front of** dc sts previously worked in blo:

Next round 78dc flo. [78 dc flo; 78 dc blo]
Continue with Yarn B.

Next round (11dc, dc2tog) 6 times. [72 dc]

Next round (5dc, dc2tog, 5dc) 6 times. [66 dc]

Next round 66dc.

Rep last round once more, then ss to first dc to join.
Fasten off.

EYE (MAKE 2)

With Yarn B, make mr.

Round 1 (RS) 6dc. [6 dc]

Round 2 2dc in each st. around [12 dc]

Round 3 (1dc, 2dc in next st) 6 times, ss to first dc to join. [18 dc]

Fasten off.



Did you make a Pretty Little Thing from this or other issues? Please share them on social media using

#ScheepjesPrettyLittleThings



PUPIL (MAKE 2)

With Yarn C, make mr.

Round 1 (RS) 6dc, ss to first dc to join. [6 dc]
Fasten off.

TAIL

Tail Fin (make 2)

With Yarn A, make mr.

Round 1 (RS) 6dc. [6 dc]

Round 2 2dc blo in each st around. [12 dc]

Round 3 (1dc blo, 2dc blo in next st) 6 times. [18 dc]

Rounds 4-10 18dc blo.

Round 11 (4dc blo, dc2tog blo) 3 times. [15 dc]

Round 12 15dc blo.

Round 13 (3dc blo, dc2tog blo) 3 times. [12 dc]

Round 14 12dc blo, ss to first dc to join.

Lightly stuff and fasten off.

Continue to make second Tail Fin, lightly stuff but do not fasten off.

Assemble Tail

This section joins both Tail Fins together in one continuous round. Flatten both and hold side by side.

Round 15 Work 6dc blo across first Tail Fin, take second Tail Fin and work 12 dc blo around (starting in first st of last round), continue to work 6dc blo across remaining side of first Tail Fin. [24 dc]

Round 16 (2dc blo, dc2tog blo) 6 times. [18 dc]

Round 17 18dc blo.

Round 18 (4dc blo, dc2tog blo) 3 times. [15 dc]

Round 19 15dc blo.

Round 20 (3dc blo, dc2tog blo) 3 times. [12 dc]

Rounds 21-23 12dc blo.

Round 24 2dc, flatten opening and working through both layers, 6dc.
Fasten off.

SIDE FIN (MAKE 2)

With Yarn A, mr.

Round 1 (RS) 6dc. [6 dc]

Round 2 2dc blo in each st around. [12 dc]

Round 3 (1dc blo, 2dc blo in next st) 6 times. [18 dc]

Rounds 4-11 18dc blo.

Round 12 Flatten opening and working through both layers, 9dc.
Fasten off.

ASSEMBLY

Use photos as guide for placement of Eyes, Pupils, Side Fins and Tail. Sew on Eyes between Rounds 20 and 26 of Body, then sew Pupils on top. Sew two straight sts using Yarn B as accents on each Pupil. Sew Side Fins onto Body just behind each Eye. Sew on Tail at back of Body onto Round 31. Sew a long straight st on each Tail Fin using Yarn B.

With Yarn C, sew mouth in two straight sts starting at centre to ensure symmetry. Thread length of elastic through spaces of Round 33 of Body.

TO FINISH

Weave in all ends, then place Whale over wobble ball.

FUN FACTS FOR BUDDING SAILORS

Did you know that the rooms on a ship have different names than in a house?



(or on a larger ship: stateroom)

DEEP SEA HANGER

BY LIZ BARRACLOUGH



Measurements

17 x 50cm

Abbreviations

st(s) stitch(es)

Pattern Notes

Jellyfish is embroidered onto tulle, using wash away stabiliser to add strength while stitching outline. Sts are visible at back of tulle: hide carried thread and knots at back behind dense stitching of Hood Top.

Use two strands of embroidery thread and satin st technique (straight sts) throughout, unless otherwise specified. Keep sts running vertically. When bringing needle back to front, pass under just one thread of tulle. For embroidery st instructions visit: bit.ly/simys-embroidery-tutorial.

Use photo as guide throughout for placement of colours, beads and tentacles.

Instructions

Step 1 Trace design centrally onto stabiliser and then place it on top of two layers of tulle, place all layers in hoop, stretch and tighten. Trim excess to 2.5cm.

Step 2 With Yarn D, st jellyfish outlines securing the three layers (two pieces tulle + stabiliser) together. Remove from hoop, run under water to wash away stabiliser then place centrally back in hoop.

Step 3 Prepare Yarns A-C by separating and/or combining strands into lengths to embroider with as follows:

2 strands of Yarn A x 1 length

1 strand of Yarn A + 1 strand of Yarn B x 1 length

2 strands of Yarn B x 1 length

1 strand of Yarn B + 1 strand of Yarn C x 1 length

2 strands of Yarn C x 1 length

Step 4 Using satin st technique, fill in Segments of Hood Top between Veins with dense colour.

Vary length of sts but keep them (mostly) vertical, following direction of shapes/lines in template.

Blend colours from top to bottom using photo as guide.

Step 5 With Yarn D, fill in Veins of Hood Top, going over outlines of Veins so they are covered as densely as rest of stitching.

Step 6 With Yarn C, fill in Segments of Hood Underside. Avoid carrying thread at back over areas that will be left unstitched.

Step 7 Using corresponding yarn colour, st on blue beads along Veins, followed by a few orange and white beads between Veins. With Yarn B, st on a few silver beads between Veins. Then with transparent thread, st a row of silver beads along bottom of Hood Top followed by another row of silver beads along bottom of Hood Underside on **back** of work. St some further silver beads to back between Segments (these will subtly show through net, adding depth).

Step 8 Prepare several 1.5m lengths (3 strands per length) of Yarns A-E for Tentacles (exact number of lengths is not critical). Begin stitching just under Hood Top and gently curve towards centre of Hood Underside: to start, thread both ends of one strand through needle, pass through tulle from back to front, then pass needle through loop of strand gently pulling to secure, make a few straight sts, bring thread out in line with bottom of



PRETTY LITTLE THINGS



SHOPPING LIST

DEEP SEA HANGER

DMC Stranded Cotton embroidery thread

Yarn A: 721 Orange x 1 skein
(item no. 117MC-0721)

Yarn B: 828 Light Blue x 1 skein
(item no. 117MC-0828)

Yarn C: 3766 Mid Blue x 1 skein
(item no. 117MC-3766)

Yarn D: 3810 Teal x 1 skein
(item no. 117MC-3810)

Toho Glass Beads round 8-0

Silver x 1 tube
(item no. TH8-0029)

White x 1 tube
(item no. TH8-0141F)

Orange x 1 tube
(item no. TH8-0958)

Blue x 1 tube
(item no. TH8-1206)

15.5cm embroidery hoop
(item no. MK0025)

1 piece 25 x 25cm Avalon Plus Wash Away Stabiliser
(item no. M9442)

4 pieces 25 x 25 cm tulle French navy
(item no. 95661-22)

1 spool transparent nylon thread
(item no. 10315-1)

1 x crewel embroidery needle
max. size 6
(item no. 125.543)

PVC glue + spreader



Hood and let it dangle. Take next three strands and secure in same way in same place. Bring thread to surface of work, weave through straight sts just made, letting remainder dangle. Repeat for all strands.

Step 9 (optional) For extra texture in Tentacles, weave strands over and under each other, braid some and/or tie in some transparent thread.

Step 10 Trim ends to different lengths, leaving orange central Tentacles longer than outer blue ones.

Step 11 Remove work from hoop and place remaining two pieces of tulle in hoop. St silver, white and blue beads randomly around edges using transparent thread. (This will add depth to Sea.)

TO FINISH

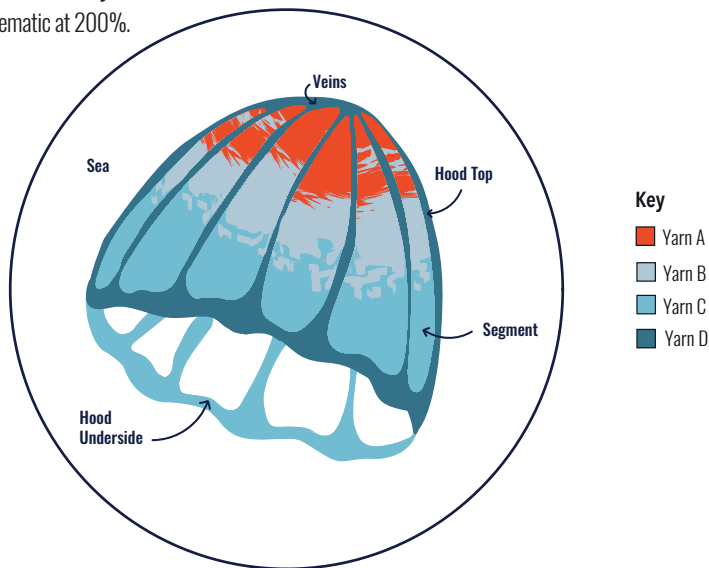
Place Jellyfish in hoop and stretch fabric so it is taut, using screwdriver to tighten and secure in position. Spread PVC glue on back of inner hoop, press tulle down and leave to dry (no need to trim excess as this adds to wave effect).

Spread glue on back of outer and inner hoop and stick beaded tulle to it (beads facing towards front of design), pressing down firmly as you go and adding final layer of glue in same place to further secure. When dry, trim excess in line with outer hoop.



Schematic 1: Embroidery Chart

Photocopy schematic at 200%.



Did you know

...that beading needles are specifically designed to make beading easier and less fiddly?

They come in all sorts of shapes and sizes!

Read more via
bit.ly/beading-needles



OCEAN BREEZE BAG

BY CHER MARCUS



PRETTY LITTLE THINGS



SHOPPING LIST

OCEAN BREEZE BAG

Scheepjes Chunky Monkey

(100% Premium Acrylic
(Anti Pilling); 100g/116m)

Yarn A: 2011 Ultramarine x 2 balls

Yarn B: 1003 Cornflower Blue x 1 ball

Yarn C: 1068 Turquoise x 1 ball

Yarn D: 1422 Aqua x 1 ball

Yarn E: 1218 Jasmine x 1 ball

Yarn F: 1001 White x 1 ball

5mm knitting needles

5mm dpns (only 2 needed)

1 x 28cm diameter perforated
wooden bag base
(item no. 67454-28)



PRETTY LITTLE THINGS



NOTES

Use this space to write your pattern notes!

Gauge/Tension

Tension is not critical for this project, but different measurements may result in different yarn amounts needed

Measurements

Total height approx. 50cm, circumference Base approx. 88cm

Abbreviations

[] number of sts on a given row

beg beginning

dpn(s) double pointed needle(s)

k knit

k2tog knit 2 sts together to decrease by 1 st: insert needle knitwise into first 2 sts and knit them together

rep repeat

RS right side

st(s) stitch(es)

st st stocking stitch: RS knit, WS purl

WS wrong side

yf yarn forward

***.....; rep from * x times/to end** work instructions after * and then repeat that section as stated

Pattern Notes

Bag is worked back and forth in rows in one continuous piece. I-cord Tie is made using two dpns and is woven through eyelet row to close Bag opening. Before attaching Strap, duplicate st Wave and Cloud motifs onto Bag surface using Stitch Charts 1-2 and photos as guide for placement.

Instructions

BAG

With 5mm needles and Yarn A, cast on 112 sts.

Top of Bag

Beg with a k row, work 18 rows in st st.

Next row (eyelet row) (RS) K3, yf, k2tog, *k6, yf, k2tog; rep from * to last 3 sts, k3.

Body

Beg with a purl row, work 21 rows in st st.

Change to Yarn B.

Beg with a k row, work 16 rows in st st.

Change to Yarn C.

Beg with a k row, work 12 rows in st st.

Change to Yarn D.

Beg with a k row, work 10 rows in st st.

Change to Yarn E.

Beg with a k row, work 16 rows in st st.

Base Edge

K 2 rows.

Base

Row 1 (RS) *K12, k2tog; rep from * to end. [104 sts]

Row 2 (WS) Purl.

Row 3 *K11, k2tog; rep from * to end. [96 sts]

Row 4 and every WS row Purl.

Row 5 *K10, k2tog; rep from * to end. [88 sts]

Row 7 *K9, k2tog; rep from * to end. [80 sts]

Row 9 *K8, k2tog; rep from * to end. [72 sts]

Row 11 *K7, k2tog; rep from * to end. [64 sts]

Row 13 *K6, k2tog; rep from * to end. [56 sts]

Row 15 *K5, k2tog; rep from * to end. [48 sts]

Row 17 *K4, k2tog; rep from * to end. [40 sts]

Row 19 *K3, k2tog; rep from * to end. [32 sts]



Did you know that 'Scheepjes' is Dutch for 'little ships'?



Row 21 *K2, k2tog; rep from * to end. [24 sts]

Row 23 *K1, k2tog; rep from * to end. [16 sts]

Row 25 *K2tog; rep from * to end. [8 sts]

Row 27 *K2tog; rep from * to end. [4 sts]

Cut yarn and pull thread through remaining sts, tighten and fasten off.

STRAP

With 5mm needles and Yarn A, cast on 18 sts.
Beg with a k row, work in st st for 90cm, ending with WS row.
Cast off.

I-CORD TIE

With 5mm dpns and Yarn A, cast on 3 sts.
Make 120cm I-cord as follows: *K3, do not turn work, push sts to other end of dpn; rep from * until I-cord measures 120cm.
Cut yarn and pull thread through remaining sts, pull tight and fasten off.

DUPLICATE ST SURFACE MOTIFS

Use photos as guide for placement.
See Stitch Chart 1: Wave and Stitch Chart 2: Cloud.
Duplicate st Waves and Clouds onto surface of Bag using Yarns B, C, D and F. Place them at varying heights around entire Body; Clouds at top and Waves around middle above Yarn E section (which represents sand).
Visit bit.ly/simys-embroidery-tutorial for duplicate st instructions.

ASSEMBLY

Join row ends of Bag using mattress st for centre

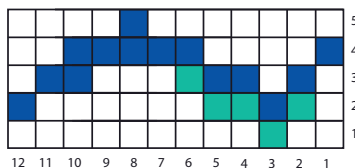
back seam. Sew wooden base to bottom of bag through Base Edge k sts. Join row ends of Strap using mattress st and fold so seam is at centre back. Oversew cast-on and cast-off sts flat, then sew Strap to inside of Bag just below eyelet row, placing one end of Strap lower than other end to create stability.

Thread I-cord Tie through holes of eyelet row. Knot each end to prevent it slipping back through holes.

TO FINISH

Weave in all ends.

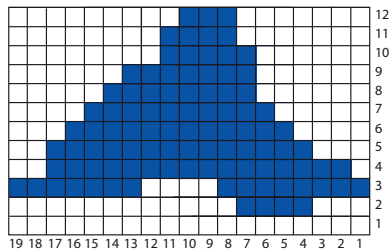
Stitch Chart 1: Wave



Key

  Alternate between Yarns B, C, D and F

Stitch Chart 2: Cloud



Key

 Yarn F



PRETTY LITTLE THINGS



CHECK OUT THE SCHEEPJES WEBSITE
FOR MORE FUN PATTERNS!

© WWW.SCHEEPJES.COM

For errata information please visit:
www.scheepjes.com/en/errata

