

PRETTY LITTLE THINGS



✧ ✧ BEACH ✧ ✧

SEW, KNIT AND CROCHET

BELOW THE REEF BAG

BY INGRID PETERS



BEACH!

Beaches come in many kinds depending on where in the world they are. Some of us grew up along sunny ocean coastlines, others visit a sandy inland lake on the weekend or while on holiday. No matter what kind of beach you have access to, a few crafty creations in sand and aqua shades can bring a mini beach escape right to your home. There's no harm in trying, right? If you do, I'd love to see your creations so be sure to share anything from this and other issues on social media using #ScheepjesPrettyLittleThings.

Scheepjes Creative Director

Sindy
♥

BELOW THE REEF BAG

Measurements

34cm wide x 46cm long

Abbreviations

pc(s) piece(s)

RS right side(s)

tog together

WS wrong side(s)

Pattern Notes

All dimensions include 1cm seam allowance, when sewing layers tog allow 1cm seam unless otherwise stated. Iron all fabric before using. Front of Bag consists of three rows: Row A with lighthouse, Row B with cross stitch pattern and Row C with coloured panels. Use straight stitch when machine sewing.



Instructions



FRONT PANEL

Row A Cut fabric into pcs as follows:

Blue – 1 pc of each: 23 x 17cm, 9 x 5cm, 9 x 17cm

Red – 3 pcs: 9 x 3.5cm (lighthouse stripes), 1 pc: 9 x 3cm (roof)

Pink – 2 pcs: 9 x 3.5cm

Green – 1 pc: 9 x 3cm

Yellow – 1 pc: 9 x 4.5cm

Sew pcs tog using image as guide to make lighthouse. Sew remaining 2 blue pcs onto both sides.

Using 3 strands of yellow embroidery thread and backstitch, embroider light beams on both sides of lighthouse.

Row B Cut green fabric to measure 37 x 17cm. Do not embroider until entire Front Panel assembled.

Row C Cut 1 pc of each colour fabric to measure 9 x 17cm. Sew pcs tog using image as guide.

Embroidery of Row B

Cut a pc of DMC Water Soluble Canvas slightly

Materials

BELOW THE REEF BAG

Tissu de Marie fabric

(100% Cotton: 150cm wide)
20cm blue (item no. 706020-17)
20cm green (item no. 706020-10)
40cm red (item no. 96244-18)
20cm yellow (item no. 95069)
40cm pink (item no. 96244-24)

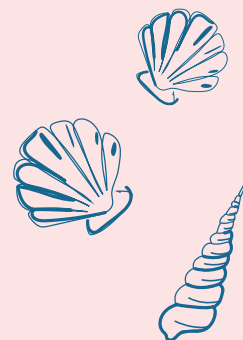
DMC Stranded Cotton embroidery thread

Blue (item no. 117MC-3760)
Red (item no. 117MC-3801)
Pink (item no. 117MC-3326)
Yellow (item no. 117MC-0726)
Light Green (item no. 117MC-0564)
Dark Green (item no. 117MC-0561)

DMC Water Soluble Canvas
(item no. DC90)

370cm 6mm blue cord
(item no. 89679)

Sewing machine + supplies



EXTRAS!

3 THINGS TO DO AT THE BEACH BESIDES SWIMMING!

① Collect shells to turn into candles!

Just melt some wax (why not use a tealight candle?) and pour it into a clean and dry shell. Place a candle wick in the middle before the wax solidifies.

② Play Noughts and Crosses!

You know, tic-tac-toe, that game you played on the front covers of all your school books during class growing up? It's a classic for friends, families, young and old, and works brilliantly in the sand.

③ Try your hand at some AI Fresco Crafting!

A personal favourite of our Creative Director Simy, all you need is your current crochet, knitting or other craft project and a cosy spot on the beach! Why not bring along a beach towel and a picnic and make a day of it?

larger than cross stitch design and pin to Row B. Cross stitch wave pattern at top of Row B using image as guide. Follow Charts to cross stitch plants, coral and fish.

Once embroidery is finished, dissolve canvas in water as per instructions on package. Gently press Front Panel dry between clean towels and air dry. When dry, carefully iron Front Panel on WS.

Front Panel Lining

Cut red fabric to measure 37 x 47cm. Note: Size of Lining may differ slightly from Front Panel due to embroidery and wetting.

Bottom Loops

Cut 2 pcs of pink fabric to measure 7 x 14cm. Fold short sides to meet in middle, then once more. Sew down both folded sides. Fold fabric in half with raw edges tog and place atop Front Panel RS facing with raw edge in line with sides (1 left, 1 right), 2cm from bottom. Sew 0.5cm from edges to secure.

BACK PANEL

Cut pink fabric to measure 37 x 47cm

Back Panel Lining

Cut red fabric to measure 37 x 47cm.

CASINGS AT TOP OF BAG

Cut 2 pcs of pink fabric to measure 35 x 8cm. On both pcs, fold short sides 0.5cm and sew in place. Fold in half with long sides and WS tog. Pin to hold.

Sew first Casing to top of Front Panel

With RS of Front Panel facing, place Casing on panel with raw edge in line with top edge of panel, then place Lining on top. Sew along top through

all layers to secure. Fold Front Panel and Lining upwards to reveal Casing and iron flat.

Sew second casing to top of Back Panel

Follow steps as per Front Panel.

To Finish

ASSEMBLE BAG

Open Panels and Lining with RS facing each other. Make sure all edges are neatly aligned. Sew around all edges, leaving a 10cm opening at bottom of Lining. Cut small notches in corners, then turn Bag inside out. Sew 10cm opening closed as close to edge as possible.

Cord

Cut cord in half. Thread first pc through right Loop and through first Casing followed by second. Knot ends tog on right-hand side. Thread second pc as per first on left-hand side.



BLUE SKIES TOP

BY PAT STRONG



Gauge/Tension

22 sts and 2 patt repeats (20 rows) to measure
10 x 8cm using 3.5 and 7mm needles.

Measurements (in cm)

Size	S	M	L	XL	XXL
To fit Bust	81-86	92-97	102-107	112-117	122-127
Actual Bust	94	102	113	124	134
Length	54	56	60	64	64

Abbreviations

beg beginning

cont continue

k knit

k2tog knit 2 sts together: insert needle knitwise into first two stitches and knit them together

patt pattern

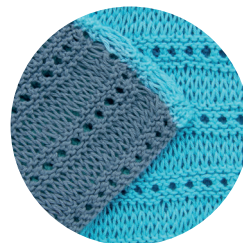
rem remaining

RS right side

st(s) stitches

yo yarn over

***.....; rep from * once more/twice more/3 more times/to end** work the instructions after * and then repeat that section as specified



TIP!

**WEAR THIS TOP
BACK TO FRONT
FOR A COMPLETELY
DIFFERENT LOOK!**

Pattern Notes

Three-needle cast off method used to join the shoulder seams, alternatively cast-off shoulder sts and sew if preferred. To neaten edges, tighten first st on every row. Body length can be adjusted by adding or reducing patt repeats on Back and Front, this may affect yarn quantity required.

Instructions

BACK

With Yarn A, cast on 104 (112: 124: 136: 148) sts loosely with 3.5mm needles.

Beg patt as follows:

Rows 1-2 K to end.

Row 3 (RS) (eyelet row) K1, *yo, k2tog; rep from * to last st, k1.

Rows 4-6 K to end.

Change to 7mm needles.

Row 7 K to end.

Row 8 P to end.

Row 9 K to end.

Change to 3.5mm needles.

Row 10 (WS) K to end.

Cont in patt until Back measures 34 (34: 36: 38: 38)cm from cast on edge, finishing with Row 4 or Row 10 of patt.

NECK

With RS facing, k52 (56: 62: 68: 74), turn and work on these sts only, placing rem sts on stitch holder.

Cont in patt until work measures 54 (56: 60: 64:

64)cm from cast on edge, finishing with Row 4 or Row 10 of patt.

Place worked sts on stitch holder and return held sts to needle.

With RS facing, rejoin yarn and work second side to match.

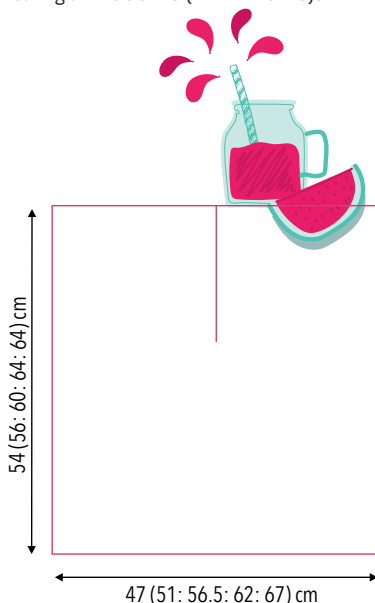
FRONT

With Yarn B, work as Back.

To Finish

Place shoulder sts RS together and join using three-needle cast off method and 3.5mm needles.

Block to measurements and join side seams leaving armhole of 20 (22: 24: 26: 26)cm.



PRETTY LITTLE THINGS



SHOPPING LIST

Pretty Little Things shopping lists can be cut out and taken along to your local yarn store when picking up supplies for your projects!

BLUE SKIES TOP

Scheepjes Cotton 8

(100% Cotton: 50g/170m)

Yarn A: 711 x 2(2: 3: 3: 3) balls

Yarn B: 725 x 2 (2: 3: 3: 3) balls

3.5mm and 7mm
knitting needles

Stitch holders



PRETTY LITTLE THINGS



NOTES

Use this space to write your pattern notes!



TOES IN THE SANDALS

BY NERISSA MUIJS



Gauge/Tension

Toe strap measures 13 (14)cm long and 0.8cm wide.

Measurements

Toe strap 13 (14)cm

Ankle strap 27 (29)cm

Heel strap 19cm

Abbreviations

[] number of sts on a given row/round

blo back loop only

ch(s) chain(s) or chain st(s)

htr half treble crochet

lp(s) loop(s)

picot ch6, ss in third lp from hook, ch3, ss in given lp

rep(s) repeat(s)

ss slip stitch(es)

st(s) stitch(es)

thtr thermal half treble: yoh, insert hook into blo of next st and blo of same st one row below, pull up lp, yoh, draw through 3 lps

tss thermal slip stitch: insert hook into blo of next st and blo of same st one row below, pull up lp, draw through lp

yoh yarn over hook

Pattern Notes

Pattern is worked back and forth in rows. Thermal sts create strong, double layered fabric with very little stretch, perfect for sandals. St instructions are given for size EU 37-38 with size EU 39-40 in brackets. When working first thtr row, work into

blo of htr row and unworked lp of foundation ch. To adapt for smaller or larger feet/ankles, increase or decrease strap lengths by multiples of 5 sts. Cut all yarn tails allowing 20cm for sewing onto soles.

Instructions

TOE STRAP (MAKE 12, 6 PER COLOUR)

Row 1 Ch37 (40), 1htr in third ch from hook and in each ch to end, turn.

Row 2 Ch1 (does not count as a st throughout), 35 (38)thtr, turn.

Row 3 Rep Row 2.

Row 4 Ch1, 35 (38)tss, fasten off.

HEEL STRAP (MAKE 2)

With Yarn A, ch55.

Row 1 1htr in third ch from hook, 1htr in each st to end, fasten off, turn.

Change to Yarn B.

Row 2 Ch1, 53thtr, fasten off, turn.

Continue with Yarn A.

Row 3 Rep Row 2, turn.

Row 4 55tss, fasten off.

ANKLE STRAP (MAKE 2)

With Yarn A, ch77 (82).

Row 1 1htr in third ch from hook, 1htr in each st to end, fasten off, turn.

Change to Yarn B.

Row 2 Ch1, 75 (80)thtr, fasten off, turn.

Change to Yarn A.

Row 3 Rep Row 2, fasten off, turn.

Change to Yarn B.

PRETTY LITTLE THINGS



SHOPPING LIST

TOES IN THE SANDALS

Scheepjes Maxi Sweet Treat
(100% Mercerised Cotton: 25g/150m)

Yarn A: 413 Cherry x 1 ball

Yarn B: 238 Powder Pink x 1 ball

2mm crochet hook

1 pair Opry shoe soles in
size EU 37-38 or EU 39-40
(item no. 650245 or 650255)



NOTES

Use this space to write your pattern notes!

Row 4 Rep Row 2, turn.

Row 5 80 (85)tss, turn.

Row 6 10ss, (ch3, picot, ch3, skip 4 sts, ss in next st) 11 (12) times, 10ss, fasten off.

To Finish

Wet block all straps before attaching to soles. All straps attached to sole through pre-punched holes using yarn tails.

RIGHT FOOT

Inner Sole

Starting at middle hole (do not count) at top (toe end) of sole and moving left, count to 5th hole. Attach one end of first Yarn A Toe Strap to 5th and 6th holes: (Thread yarn tail down through 5th hole, up through 6th, through alternate corner of same strap end, back down through 6th hole and up again through 5th hole, through same corner as yarn tail) twice.

Fasten off tightly and weave in end.

Rep for second and third Yarn A Toe Straps, attaching second strap to 6th and 7th holes, and third strap to 7th and 8th holes.

Rep for three Yarn B Toe Straps, attaching first to 8th and 9th holes, second to 9th and 10th, and third to 10th and 11th.

Outer Sole

Starting at middle hole (do not count) at top (toe end) of sole and moving right, count to 5th hole.

Using same method as Left Side, attach alternate end of first Yarn B Strap to 5th and 6th holes, and second and third Yarn B Straps in subsequent holes.

Rep for three Yarn A Toe Straps in subsequent holes, weaving each strap under and over the three straps already attached in Yarn B (use image as guide).

HEEL STRAP

Rotate sole and attach Heel Strap (detail facing upwards) to 7th (8th) and 8th (9th) holes on outer side of heel using middle 2 holes (middle hole) of heel as starting point).

Attach alternate end of Heel Strap to 6th (8th) and 7th (9th) holes on inner side of heel.

ANKLE STRAP

Attach Ankle Strap to 3rd (3rd) and 4th (4th) holes on outer side of heel and to 2nd (3rd) and 3rd (4th) holes on inner side of heel (picot facing toe and Yarn A facing upwards).

LEFT FOOT

Rep as per Right Foot.





PRETTY LITTLE THINGS



CHECK OUT THE SCHEEPJES WEBSITE
FOR MORE FUN PATTERNS!

© WWW.SCHEEPJES.COM

For errata information please visit:
www.scheepjes.com/en/errata

