

# PRETTY LITTLE THINGS



## Minibeasts

CROCHET, SEW AND KNIT

# *Slow and steady wins the race*

*Create texture with simple crochet stitches, worked in different ways!*

## MINIBEASTS

There's nowhere I'd rather be (besides my craft room!), than pottering about among the flowers and plants of my garden. It's my happy place, and I love seeing the many different critters that set up home in it. These little creatures, perhaps found in the foliage or busily flitting around, have inspired this collection of charming projects. Each gives the opportunity to master or revisit simple stitches, and a couple introduce more advanced stitches and techniques on a very small scale. I'm positive this issue will get you buzzing with excitement!

Scheepjes Creative Director

*Sunny*

### TEXTURED MUSIC BOX SNAIL



By Nienke Jongstra

#### Gauge/Tension

Tension is not critical for this project, but different measurements may result in different yarn amounts needed

#### Measurements

15 x 17cm (excluding hanging cord)

#### Abbreviations (UK terms)

[ ] number of stitches on a given round

**blo** back loop only: insert hook under back loop only

**ch(s)** chain(s) or chain stitch(es)

**dc2tog** double crochet 2 sts together to decrease by 1 st : (insert hook in next st, yoh, pull up loop) twice, yoh, pull through both loops

**dc** double crochet

**mr** magic ring

**RS** right side

**ss** slip stitch(es)

**st(s)** stitch(es)

**tr** treble crochet

**yoh** yarn over hook

**(.....) x times** work the instructions between brackets the total number of times stated

#### Special Abbreviations

**BPtr** back post treble crochet: yoh, insert hook from back to front to back to go around post of st indicated, work a tr

**FPss** front post slip stitch: insert hook from front to back to front to go around post of st indicated, work a ss

**FPtr** front post treble crochet: yoh, insert hook from front to back to front to go around post of st indicated, work a tr

#### Pattern Notes

Snout, Feeler, Head and Neck, and Bell Cover are worked using amigurumi method: work sts

PRETTY LITTLE THINGS



#### SHOPPING LIST

Visit your local Scheepjes retailer to purchase all materials listed below, quoting the item numbers where required

#### TEXTURED MUSIC BOX SNAIL

##### Scheepjes Catona

(100% Mercerised Cotton; 50g/125m)

**Yarn A:** 406 Soft Beige x 1 ball

**Yarn B:** 505 Linen x 1 ball

2.5mm crochet hook

2 x 5mm black safety eyes  
(item no. 5633-05-000)

1 x music box  
(item no. 96549)

1 x 24mm enclosed bell for baby toys  
(item no. 96017)

1 x stitch marker

Polyester stuffing  
(item no. 240130-10)



# PRETTY LITTLE THINGS



## NOTES

Use this space to write your pattern notes!

## BEDTIME LULLABIES

Help a little one **fall asleep** to the sound of 'Twinkle, Twinkle, Little Star' or 'Für Elise'. The **music box** used as the centre of the snail is available with a choice of these tunes, via Scheepjes retailers.

Item no. 96549-1, 96549-2.

Made a Pretty Little Thing from one of our issues?  
We'd love to see it! Share on social media using  
#ScheepjesPrettyLittleThings

continuously in a spiral without closing each round with ss. Mark first st of each round with st marker, moving it up as you go. Half Shell section is worked in rounds, join each round with ss.

Colour changes take place on last st of round in previous colour; work last yoh of last dc in new colour and pull loop through.

## Instructions

### HALF SHELL (MAKE 2)

With Yarn A, make mr.

**Round 1 (RS)** Ch3 (counts as first tr throughout), 17tr into ring, ss to top of beg 3-ch to join. [18 tr]

**Round 2 (RS)** 1FPss, ch2 (counts as 1 FPtr), 1BPtr, (1FPtr, 1BPtr) 8 times, ss to top of beg 2-ch. [9 FPtr, 9 BPtr]

**Round 3** Ch3, 1tr (2tr in next st) 17 times, ss to top of beg 3-ch. [36 tr]

**Round 4** 1FPss, ch2 (counts as 1 FPtr), 1BPtr, (1FPtr, 1BPtr) 17 times, ss to top of beg 2-ch. [18 FPtr, 18 BPtr]

**Round 5** Ch3, 2tr, (2tr in next st, 1tr) 17 times, ss to top of beg 3-ch. [54 tr]

**Round 6** 1FPss, ch2 (counts as 1 FPtr), 1BPtr, (1FPtr, 1BPtr) 26 times, ss to top of beg 2-ch. [27 FPtr, 27 BPtr]

**Round 7** Ch3, 3tr, (2tr in next st, 2tr) 17 times, ss to top of beg 3-ch. [72 tr]

**Round 8** 1FPss, ch2 (counts as 1 FPtr), 1BPtr, (1FPtr, 1BPtr) 35 times, ss to top of beg 2-ch. [36 FPtr, 36 BPtr]

**Round 9** Ch1 (does not count as st throughout), 72dc blo, ss to first st. [72 dc blo]

**Rounds 10-13** Ch1, 72dc, ss to first st. [72 dc]  
Fasten off, leaving 30cm tail for assembly.

## SNOUT

With Yarn B, make mr.

**Round 1 (RS)** 6dc into ring. [6 dc]

**Round 2 (RS)** 2dc in each st around. [12 dc]

**Round 3** (1dc, 2dc in next st) 6 times. [18 dc]

**Rounds 4-5** 18dc.

**Round 6** 3dc, (1dc, 2dc in next st) 6 times, 3dc. [24 dc]

**Round 7** 6dc, (1dc, 2dc in next st) 6 times, 6dc. [30 dc]

Fasten off, leaving 30cm tail for assembly.

## FEELER (MAKE 2)

With Yarn A, make mr.

**Round 1 (RS)** 6dc into ring. [6 dc]

**Round 2 (RS)** (1dc, 2dc in next st) 3 times. [9 dc]

**Rounds 3-4** 9dc.

**Round 5** (Dc2tog, 1dc) 3 times. [6 sts]

Change to Yarn B.

**Rounds 6-12** 6dc.

Fasten off, leaving 30cm tail for assembly.

## HEAD AND NECK

With Yarn B, make mr.

**Round 1 (RS)** 6dc into ring. [6 dc]

**Round 2 (RS)** 2dc in each st around. [12 dc]

**Round 3** (1dc, 2dc in next st) 6 times. [18 dc]

**Round 4** (1dc, 2dc in next st, 1dc) 6 times. [24 dc]

**Round 5** 24dc.

**Round 6** (3dc, 2dc in next st) 6 times. [30 dc]

**Rounds 7-20** 30dc, do not fasten off.

Stuff Snout and attach between Rounds 1 and 2 and Rounds 11 and 12 of Head, making sure increased side of Snout is at top.

Insert safety eyes between Rounds 6 and 7 of Head section, leaving 8 sts between eyes.

Sew Feelers above eyes between Rounds 3 and 5.

Begin stuffing Head and Neck.

Continue working Neck as follows:

**Rounds 21-34** 30dc.

Continue stuffing Neck until Round 34.

**Round 35** (3dc, dc2tog) 6 times.

[18 dc, 6 dc2tog]

**Round 36** 24dc. [24dc]

**Round 37** (1dc, dc2tog, 1dc) 6 times.

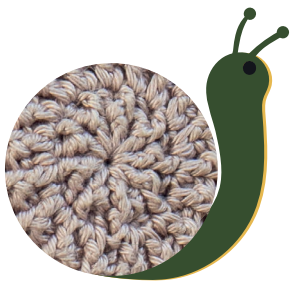
[12 dc, 6 dc2tog]

**Rounds 38-39** 18dc. [18 dc]

With Snout facing forward, dc around to side of piece.

**Round 40** Flatten opening and working though both layers, 9dc. [9 dc]

Fasten off, leaving 30cm tail for assembly.



## HANGING CORD

With Yarn B, work 14cm string of chs.

Fasten off, leaving 20cm tail for tying.

## BELL COVER

Remove original pull handle from music box and tie rattle bead securely to pull cord.

With Yarn A, make mr.

**Round 1 (RS)** 6dc into ring. [6 dc]

**Round 2 (RS)** 2dc in each st around. [12 dc]

**Round 3** (1dc, 2dc in next st) 6 times. [18 dc]

**Rounds 4-8** 18dc.

**Round 9** (1dc, dc2tog) 6 times.

[6 dc, 6 dc2tog]

Insert bell.

**Round 10** (Dc2tog) 6 times. [6 dc2tog]

**Rounds 11-13** 6dc. [6 dc]

Fasten off, leaving 20cm tail. Thread tail end through final 6 sts, pull tight and weave in ends.

## ASSEMBLY

Thread Hanging Cord through top of music box and tie securely.

Join Half Shell pieces with WS together and music box in-between, making sure Hanging Cord and pull cord of music box hang vertically in line with one another, using photo as guide.

Stuff Half Shells as you go.

Sew Head and Neck piece to joined Half Shell pieces.

## TO FINISH

Fasten off and weave in ends.

## DIFFERENT WAYS TO WORK SIMPLE CROCHET STITCHES

Crochet stitches are highly versatile. By varying their placement, you can create endless textures and stitch patterns!

The snail's shell in this pattern may look complex, but in practice it's quite simple. Worked entirely with treble crochet stitches, the intricate texture is created by changing *where* the stitch is worked. Instead of working *into the top* of the stitches of the previous round, the treble stitches are worked *around the front and back of the stitch posts* of the previous round, as shown below.



*Alternating back and front post stitches is a popular way to create ribbed textures in crochet. The method can be worked using any standard crochet stitches, from slip stitches right through to triple trebles.*

# Bee-you-tiful!



*Keep little hands busy! This project is suitable for kids to sew*

## BEE HAIR ACCESSORY



By Liz Barraclough

### Measurements

5 x 5cm

### Pattern Notes

Bee is made using felt fused with interlining to strengthen, create sharp edges and stabilise fabric for adding embellishments. Body, Head and Wing pieces are embellished, Body and Head are stuffed, then all pieces assembled to complete Bee. Safety eyes can be replaced with beads or embroidered features if preferred. Bee is then attached to a ready-made hair accessory, such as a hair clip or hair tie. See photo for position of Body, Head and Wings. For embroidery st instructions, visit Simy's Studio blog: [bit.ly/simys-embroidery-tutorial](http://bit.ly/simys-embroidery-tutorial).

### Abbreviations

**RS** right side

**st(s)** stitch(es)

**tog** together

**WS** wrong side(s)

### Instructions

#### TRANSFERRING DESIGN

**Step 1** Trace pattern pieces from Schematic 1 onto interlining, and cut out all pieces.

**Step 2** Fuse interlining to corresponding colour of felt following manufacturer's instructions. Cut out all shapes, leaving backing paper in place.

## BEE

**Step 3** Remove backing from Stripes and fuse to one Body piece. Then remove backing from Body pieces, place WS tog and blanket st layers tog using yellow thread. Stop 2cm from end and insert stuffing before closing gap.

**Step 4** Remove backing from Eye pieces and fuse both to one Head piece. Snip holes into both Eyes for safety eyes, and secure safety eyes in place. Cut stem of safety eyes to shorten. Using one strand of black thread, embroider mouth with back sts. Lightly colour in cheeks with red pencil before placing Head pieces WS tog. Blanket st around and stuff in same way as Body, leaving a long thread tail.

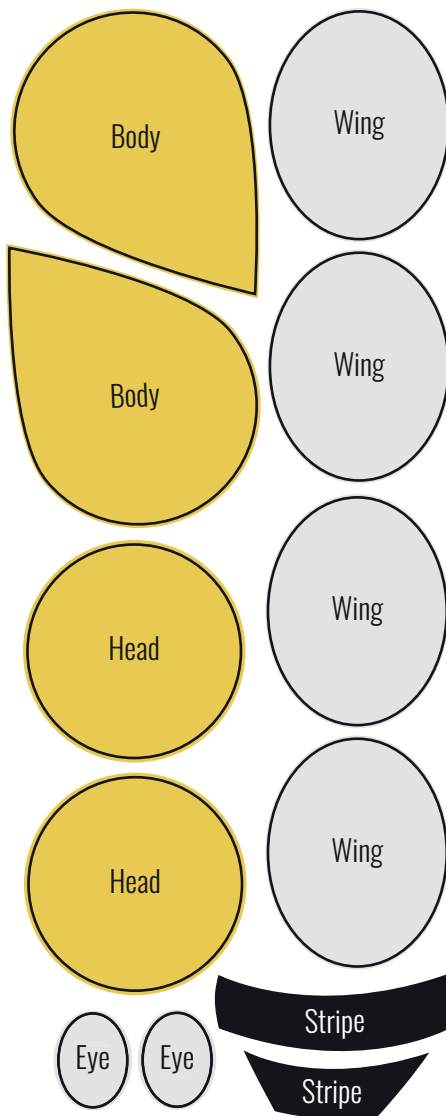
**Step 5** Remove backing from Wings. Use two strands of black thread to back st an outward curving feeler on RS of two Wing pieces, ending with a French knot. Place these Wing pieces WS tog with a plain Wing and fuse tog. Using two strands of metallic thread, st around edges with running sts, starting with left Wing. When stitching right Wing, place over left Wing and st through both layers to attach them tog.

**Step 6** Place Wings between Head and Body. Secure all layers tog with small sts using thread tail of Head.

## TO FINISH

**Step 7** St or glue hair tie or clip to secure to back of Bee.

### Schematic 1: Cutting Template



PRETTY LITTLE THINGS



### SHOPPING LIST

Visit your local Scheepjes retailer to purchase all materials listed below, quoting the item numbers where required

### BEE HAIR ACCESSORY

#### Queen's Quality Felt

10 x 7cm piece white felt  
(item no. 10100-001)

9 x 8cm piece yellow felt  
(item no. 10100-002)

9 x 3cm piece black felt  
(item no. 10100-028)

13 x 9cm piece Vlieseline fusible interlining  
(item no. 236010)

1 spool Gütermann rPET Sew-All thread yellow  
(item no. G723860-852)

1 skein DMC Stranded Cotton embroidery thread black  
(item no. 117MC-0310)

1 skein DMC Light Effects metallic embroidery thread light blue  
(item no. 317W-E3747)

2 x 5mm safety eyes  
(item no. 5633-05-000)

Small amount of polyester stuffing  
(item no. 240130-10)

Sewing needle

Red pencil or crayon

Hair tie or clip

Glue (optional)

# *Appreciate the little things*



*A great introduction to  
intarsia knitting, using  
multiple colours together!*



## CUTE LADYBIRD PURSE



By Cher Marcus

### Gauge/Tension

22 sts x 36 rows to measure 10 x 10cm over st st using 3mm needles

### Measurements

10 x 12cm including purse frame

### Abbreviations

[ ] number of sts on a given row

**beg** beginning

**ccA** colour change to Yarn A

**ccB** colour change to Yarn B

**k** knit

**k2tog** knit 2 sts tog to decrease by 1 st: insert needle wise into first 2 sts and knit them tog

**kfb** knit front and back to increase by 1 st: insert needle wise into next st; knit as normal but don't slip st from needle, instead bring needle around to back and knit through back loop of same st

**kwise** knitwise

**p** purl

**rep** repeat

**RS** right side

**st(s)** stitch(es)

**st st** stocking stitch: RS knit, WS purl

**tog** together

**WS** wrong side(s)

### Pattern Notes

Ladybird Purse is worked flat in two pieces that are joined tog. Purse is then lined with felt and kiss-lock purse frame is stitched to opening at top. Use intarsia method to change colours mid-row; create two small balls of Yarn B (red) to use either side of Yarn A (black) section. Be sure to twist yarns at colour changes to avoid holes forming (see tips on page 11).

### Instructions

#### PURSE (MAKE 2)

With Yarn A, cast on 10 sts.

**Row 1 (WS)** Purl. [10 sts]

**Row 2 (RS)** Kfb, k8, kfb. [12 sts]

**Row 3** Purl.

**Row 4** (Kfb) twice, k8, (kfb) twice. [16 sts]

**Row 5** Purl.

Join two small balls of Yarn B for intarsia section and continue as follows:

**Row 6** CcB, kfb, ccA, kfb, k12, kfb, ccB, kfb. [20 sts]

**Row 7** P3, ccA, p14, ccB, p3.

**Row 8** (Kfb) twice, k2, ccA, k12, ccA, k2, (kfb) twice. [24 sts]

**Row 9** P7, ccA, p10, ccB, p7.

**Row 10** (Kfb) twice, k6, ccA, k8, ccB, k6, (kfb) twice. [28 sts]

**Row 11** P11, ccA, p6, ccB, p11.

**Row 12** K12, ccA, k4, ccB, k12.

**Row 13** P13, ccA, p2, ccB, p13.

**Row 14** K13, ccA, k2, ccB, k13.

Rep Rows 13-14 a further 5 times.

PRETTY LITTLE THINGS



### SHOPPING LIST

Visit your local Scheepjes retailer to purchase all materials listed below, quoting the item numbers where required

### CUTE LADYBIRD PURSE

#### Scheepjes Colour Crafter

(100% Premium Acrylic  
(Anti Pilling): 100g/300m)

**Yarn A:** 1002 Ede x 1 ball

**Yarn B:** 1010 Amsterdam x 1 ball

3mm knitting needles

4 x locking stitch markers

8 x 10mm black buttons

1 x 85mm sew-in kiss-lock  
purse frame  
(item no. 99699-2)

20 x 30cm black felt  
(item no. 10100-028)

Sewing needle + black thread





**NOTES**

Use this space to write your pattern notes!

**IT'S ALL IN THE DETAIL**

Purse frames are a great way to add a **professional touch** to your makes! The kiss-lock frame used in this pattern is available in **three different shades**, all featuring perforated edges for easy attachment to your project. Available via Scheepjes retailers.

Item no. 99699-1,  
99699-2, 99699-3.



**Row 25** Rep Row 13.

**Row 26** K2tog, k11, ccA, k2, ccB, k11, k2tog. [26 sts]

**Row 27** P12, ccA, p2, ccB, p12.

Rep Rows 26-27 twice more. [22 sts]

Place st marker at each end of previous row to mark position of purse frame.

**Row 32** K2tog, k7, ccA, k4, ccB, k7, k2tog. [20 sts]

**Row 33** P7, ccA, p6, ccB, p7.

**Row 34** K2tog, k4, ccA, k8, ccB, k4, k2tog. [18 sts]

**Row 35** P4, ccA, p10, ccB, p4.

Fasten off Yarn B and continue with Yarn A only.

**Row 36** Knit.

**Row 37 and next two WS rows** Purl.

**Row 38** K2tog, k14, k2tog. [16 sts]

**Row 40** (K2tog) twice, k8, (k2tog) twice. [12 sts]

**Row 42** K2tog, k8, k2tog. [10 sts]

**Row 43** Purl.

**ASSEMBLY**

Block Ladybird pieces. St buttons onto Yarn B (red) sections with sewing thread, using photo as guide.

Trace around Purse onto felt twice, mark position of st markers, cut out two pieces. Blanket st felt lining tog beneath marked points.

With WS of Purse pieces held tog, join edges beneath st markers using mattress st and yarn tail, remove markers, weave in ends. Place lining into Purse. Oversew raw edge of one side of Purse to adjacent raw edge of lining using sewing thread, rep for other side.

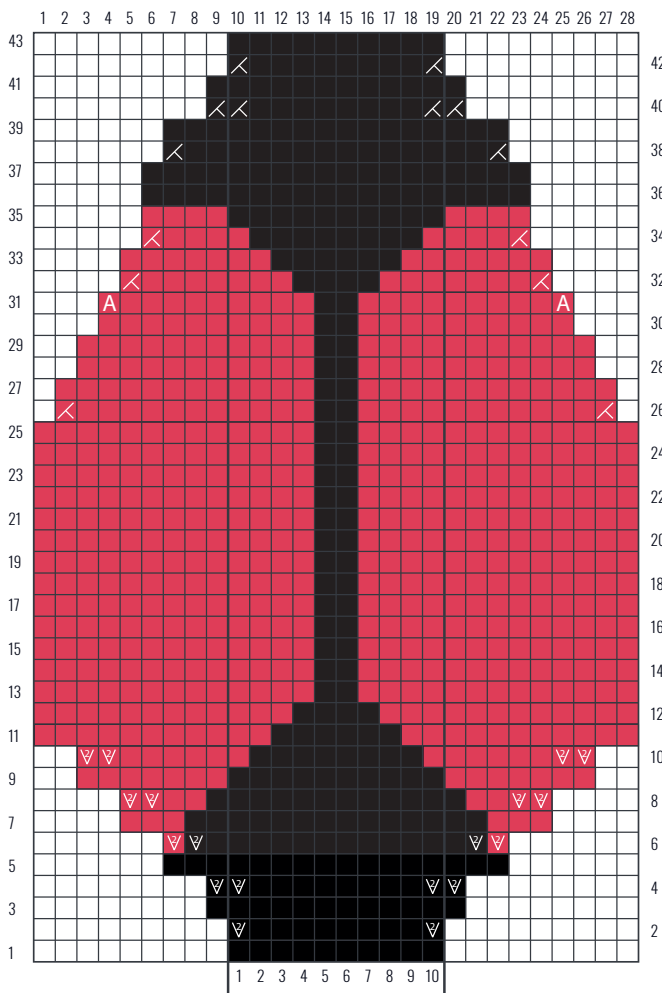
Open out purse frame completely and push Purse and lining edges into frame slots. Using sewing thread doubled, oversew purse frame in place through holes of frame, making sure to st through all layers.

**TO FINISH**

Weave in ends.



## Knitting Chart 1: Purse



### Key

- Yarn A: 1002 Ede
- Yarn B: 1010 Amsterdam
- / k2tog
- ∇ kfb
- A place st marker

## TOP TIPS FOR INTARSIA KNITTING

**From stitch tension and gauge to final assembly, working in intarsia calls for extra attention!**

This adorable purse in a classic stocking stitch pattern features colour changes worked using the intarsia method. You may notice uneven stitches or gaps where the colour changes, which could lead to different dimensions than given (and a purse that doesn't fit within the kiss-lock frame).



To minimise gaps and maintain tension, tighten the first and last stitches of each colour section by pulling the yarn tight and twisting the two strands together *before continuing in the next colour*. Check your measurements as you go to avoid any unwanted surprises at the assembly stage.

# PRETTY LITTLE THINGS



CHECK OUT THE SCHEEPJES WEBSITE  
FOR MORE FUN PATTERNS!

© [WWW.SCHEEPJES.COM](http://WWW.SCHEEPJES.COM)

For errata information please visit:  
[www.scheepjes.com/en/errata](http://www.scheepjes.com/en/errata)

