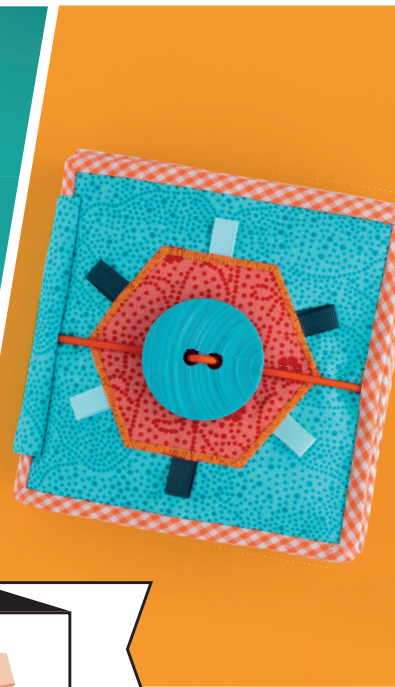


NUMBER 02 | €1/£1/\$1 | ENGLISH EDITION



PRETTY LITTLE THINGS



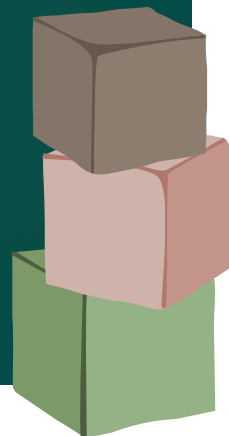
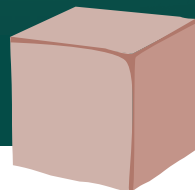
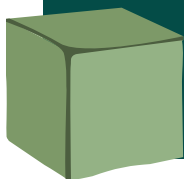
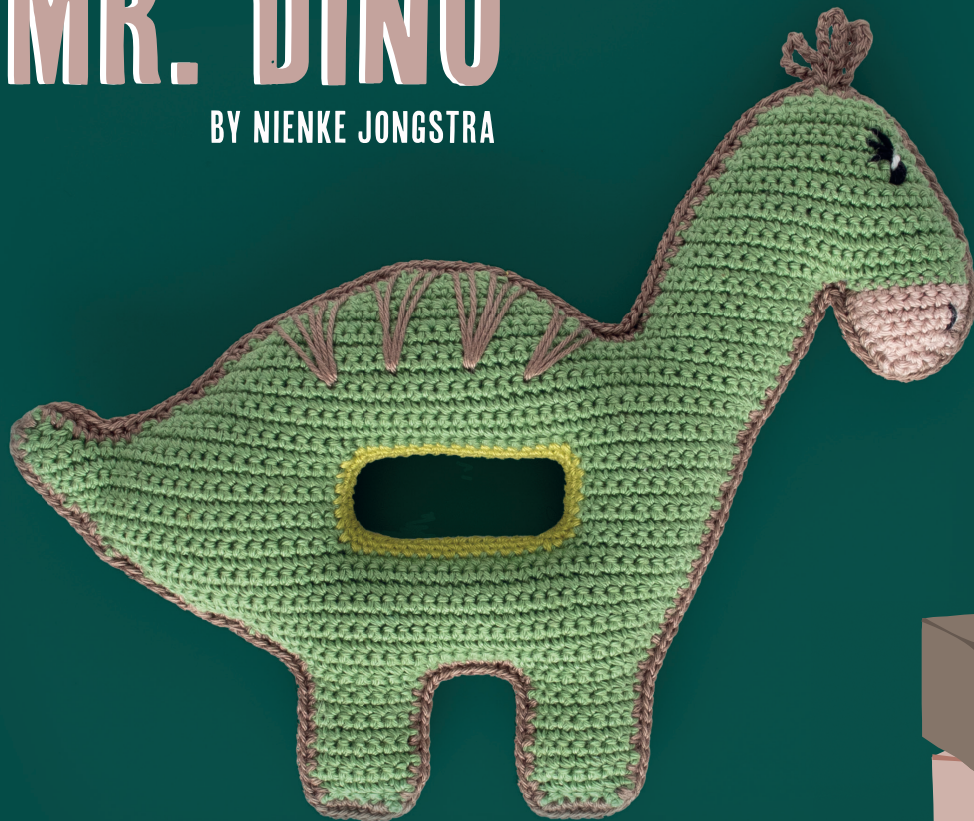
  **TOYS**  

CROCHET, KNIT AND SEW

WWW.SCHEEPJES.COM

MR. DINO

BY NIENKE JONGSTRA



TOYS!

Whether you're really little, a weeny bit older, or simply a big kid at heart, toys give oodles of joy! Isn't it amazing how toys can completely captivate our little ones in all their brightly-coloured shapes and sizes? But toys aren't just fun! They teach us how to share, work together, and collaborate. So let's honour all those wonderful toys from our past, the present, and to be made, in this issue of Pretty Little Things!

Scheepjes Creative Director

Sunny

MR. DINO

Gauge/Tension

Tension is not critical for this project.

Measurements

25 x 20cm

Abbreviations

[] number of stitches on a given row

ch(s) chain(s) or chain st(s)

cont continue

dc double crochet

dc2tog double crochet 2 together to decrease by 1 st:
(insert hook in next st/sp, yoh, pull up loop)

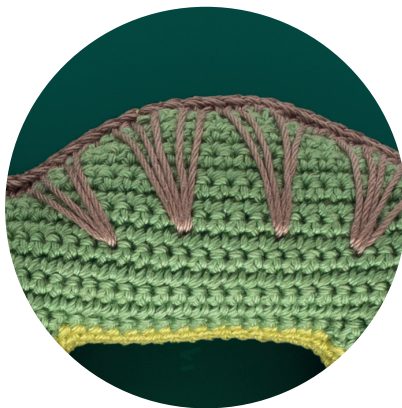
ss slip stitch(es)

st(s) stitch(es)

yoh yarn over hook

Pattern Notes

Mr. Dino consists of several sections joined throughout the pattern. Follow Instructions twice to make two sides of Mr. Dino and crochet together afterwards. Details to be embroidered on both sides of the toy.



Instructions

SNOUT

With Yarn C, ch11.

Row 1 (WS) 1dc in second ch from hook, 9dc, turn.
[10 dc]

Row 2 (RS) Ch1 (does not count as st throughout),
10dc, turn.

Row 3 Ch1, 1dc, dc2tog, 4dc, dc2tog, 1dc, turn. [8 dc]

Row 4 Ch1, 8dc, turn.

PRETTY LITTLE THINGS



SHOPPING LIST

Pretty Little Things shopping lists can be cut out and taken along to your local yarn store when picking up supplies for your projects!

MR. DINO

Scheepjes Catona

(100% Mercerised Cotton: 50g/125m)

Yarn A: 212 Sage Green x 1 ball

Scheepjes Catona

(100% Mercerised Cotton: 10g/25m)

Yarn B: 512 Lime x 1 ball

Yarn C: 257 Antique Mauve x 1 ball

Yarn D: 254 Moon Rock x 1 ball

Scrap black cotton yarn

Scrap white cotton yarn

2.5mm crochet hook

Polyester stuffing

Squeaker/rattle (optional)

Item no. 96023





NOTES

Use this space to write your pattern notes!

Row 5 Ch1, 1dc, dc2tog, 2dc, dc2tog, 1dc, turn. [6 dc]

Row 6 Ch1, 2dc, dc2tog, 2dc, turn. [5 dc]

Row 7 Ch1, 2ss, 2dc, 1ss. [2 dc]

Fasten off and put aside.

FIRST PAW

With Yarn A, ch7.

Row 1 (WS) 1dc in second ch from hook, 5dc, turn. [6 dc]

Row 2 (RS) Ch1, 1dc, 2dc in next st, 2dc, 2dc in next st, 1dc, turn. [8 dc]

Rows 3-10 Ch1, 8dc.

Fasten off and put aside.

SECOND PAW AND BELLY

Make Second Paw as First Paw but don't fasten off.

Continue as follows:

Row 11 Ch1, 1dc, 2dc in next st, 4dc, 2dc in next st, 1dc, ch6, continue in last st made in First Paw, 1dc, 2dc in next st, 4dc, 2dc in next st, 1dc, turn. [26 dc]

Row 12 Ch1, 1dc, 2dc in next st, 23dc, 2dc in next st, ch3, turn. [31 dc]

Row 13 Ch1, 31dc, turn.

Row 14 Ch1, 1dc, 2dc in next st, 28dc, 2dc in next st, ch3, turn. [36 dc]

Row 15 Ch1, 36dc, turn.

Row 16 Ch1, 1dc, 2dc in next st, 33dc, 2dc in next st, ch2, turn. [40 dc]

Row 17 Ch1, 40dc, turn.

Row 18 Ch1, 1dc, 2dc in next st, 37dc, 2dc in next st, ch2, turn. [44 dc]

Row 19 Ch1, 44dc, turn.

Row 20 Ch1, 1dc, 2dc in next st, 40dc, 2dc in next st, 1dc, turn. [46 dc]

LEFT SIDE OF OPENING

Row 21 Ch1, 19dc, turn. [19 dc]

Row 22 Ch1, 18dc, 2dc in next st, ch1, turn. [21 dc]

Row 23 Ch1, 21dc, turn.

Row 24 Ch1, 20dc, 2dc in next st, ch1, turn. [23 dc]

Row 25 Ch1, 23dc, turn.

Row 26 Ch1, 22dc, 2dc in next st, ch1, turn. [25 dc]

Row 27 Ch1, 25dc.

Fasten off.

RIGHT SIDE OF OPENING

Join Yarn A with ss to Row 20 from Belly, leaving 16 sts unworked.

Row 21 (WS) 1dc in same st as ss, 10dc, turn. [11 dc]

Row 22 (RS) Ch1, 11dc, turn.

Row 23 Ch1, 9dc, 2dc in next st, 1dc, turn. [12 dc]

Rows 24-25 Ch1, 12dc, turn.

Row 26 Ch1, 1dc, 2dc in next st, 10dc, turn. [13 dc]

Row 27 Ch1, 13dc, turn.

CLOSING THE OPENING

Row 28 Ch1, 13dc, ch16, continue on sts from Left Side of Opening, 17dc, leaving remaining sts unworked, turn. [30 dc, 16 ch]

Row 29 Ch1, 2ss, 44dc, turn. [44 dc]

Row 30 Ch1, 1dc, 2dc in next st, 42dc, turn. [43 dc]

Row 31 Ch1, 1ss, 42dc, turn. [42 dc]

Row 32 Ch1, 1dc, 2dc in next st, 40dc, turn. [42 dc]

Row 33 Ch1, 1ss, 41dc, turn. [41 dc]

Row 34 Ch1, 1dc, 2dc in next st, 39dc, turn. [42 dc]

Row 35 Ch1, 1ss, 41dc, turn. [41 dc]

Row 36 Ch1, 1dc, 2dc in next st, 39dc, turn. [42 dc]



BACK

Row 37 Ch1, 1ss, 26dc, leaving remaining 15 sts unworked, turn. [26 dc]

Row 38 Ch1, 2ss, 23dc, turn. [23 dc]

Row 39 Ch1, 2ss, 21dc, turn. [21 dc]

Row 40 Ch1, 2ss, 18dc, turn. [18 dc]

Row 41 Ch1, 2ss, 15dc, turn. [15 dc]

Row 42 Ch1, 2ss, 12dc, turn. [12 dc]

Row 43 Ch1, 2ss, 9dc, turn. [9 dc]

Row 44 Ch1, 2ss, 4dc, 2ss.

Fasten off.

NECK

Join Yarn A with ss at 15th st from right-hand side of row end of Row 36 of Closing the Opening.

Row 37 (WS) 1ss, 13dc, turn. [13 dc]

Row 38 (RS) Ch1, 13dc, turn.

Row 39 Ch1, 1dc, dc2tog, 8dc, 2dc in next st, 1dc, turn. [13 dc]

Rows 40-42 Ch1, 13dc, turn.

Row 43 Ch1, 1dc, dc2tog, 8dc, 2dc in next st, 1dc, cont working in foundation ch of Snout, 10dc, turn. [23 dc]

Row 44 Ch1, 23dc, turn.

Row 45 Ch1, 20dc, dc2tog, 1dc, turn. [22 dc]

Row 46 Ch1, 22dc, turn.

Row 47 Ch1, 1dc, dc2tog, 16dc, dc2tog, 1dc, turn. [20 dc]

Row 48 Ch1, 20dc, turn.

Row 49 Ch1, 1dc, dc2tog, 14dc, dc2tog, 1dc, turn. [18 dc]

Row 50 Ch1, 18dc, turn.

Row 51 Ch1, 1dc, dc2tog, 12dc, dc2tog, 1dc, turn. [16 dc]

Row 52 Ch1, 16dc, turn.

Row 53 Ch1, 1dc, dc2tog, 10dc, dc2tog, 1dc, turn. [14 dc]

Row 54 Ch1, 14dc, turn.

Row 55 Ch1, 1dc, dc2tog, 8dc, dc2tog, 1dc, turn. [12 dc]

Row 56 Ch1, 1dc, dc2tog, 6dc, dc2tog, 1dc, turn. [10 dc]

Row 57 Ch1, 1dc, dc2tog, 4dc, dc2tog, 1dc, turn. [8 dc]

Row 58 Ch1, 2ss, 4dc, turn. [4 dc]

Row 59 Ch1, 3ss, 1dc.

Fasten off.

TAIL

Join Yarn A with ss at 7th st from left-hand side of row end of side of Row 27 of Belly.

Row 28 (RS) 1ss in next st, 5dc, turn. [5 dc]

Row 29 (WS) Ch1, 2dc, dc2tog, leaving last st unworked, turn. [3 dc]

Row 30 Ch1, 2ss, 1dc.

Fasten off.

EDGING OPENING

Join Yarn B with ss in any corner of Opening, work 16dc at long side and 7dc at short side of Opening, work a second round and fasten off.

Make second side of Mr. Dino

ASSEMBLY

Sew both openings of Mr. Dino together using Yarn B. Join Yarn D with ss to any st at edge of one side of the toy and dc two sides of Mr. Dino together. When you arrive at top of head, work 1dc, ch10, 1dc, ch10, 1dc, ch10, 1ss and continue dc edging. Work 2dc or 3dc in sharp corners. Stuff Mr. Dino and insert optional rattle or squeaker as you go. Use photo as a guide to embroider Eyes and Nose Hole and stripes on Back.

To Finish: fasten off and weave in all ends.



BUILD YOUR NAME BLOCKS

BY MICHELLE OONINCX



Gauge/Tension

23 sts and 34 rows to measure
10 x 10cm over st st using 3mm needles

Measurements

Single Motif measures 10 x 10cm
(4 x 4in) after blocking

Abbreviations

k knit
p purl
RS right side
st(s) stitch(es)
st st stocking stitch
WS wrong side

Pattern Notes

Each cube consists of 6 different coloured Motifs. The letters are only to be duplicate stitched onto one side per cube. After casting off each Motif, leave a 40cm yarn tail to use for sewing the Motifs together. As this is a childrens toy, make sure to securely fasten all ends. Yarn quantities are for 5 cubes.

MOTIF

Make 6 per cube, each Motif in a different colour.
Cast on 23 sts.

Row 1 (RS) K.

Row 2 (WS) P.

Repeat Rows 1-2 another 16 times.

Cast off sts.

Block Motifs slightly.

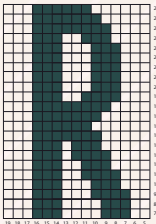
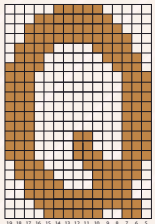
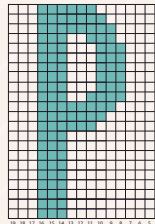
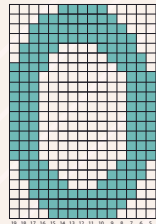
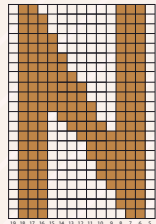
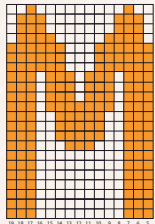
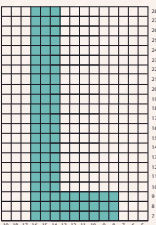
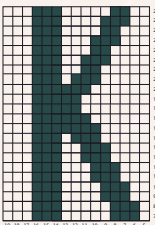
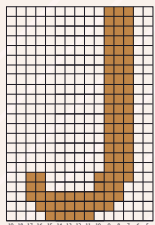
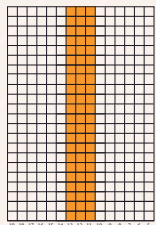
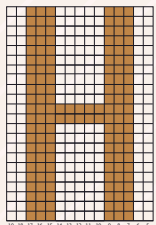
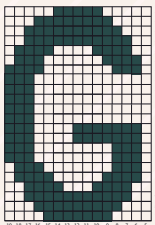
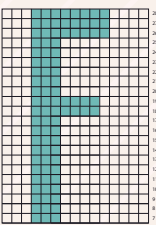
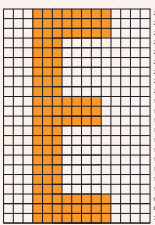
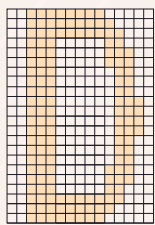
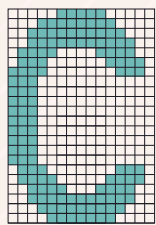
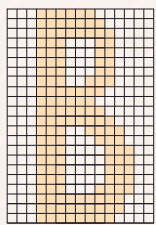
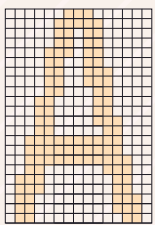
DUPLICATE STITCH

Using the Charts as a guide, duplicate stitch a letter of your choice onto one Motif per cube. Numbers in Charts refer to st on Motif. Use Yarn A to duplicate stitch on the Yarn F Motif and vice versa. Use Yarn B to duplicate stitch on the Yarn E Motif and vice versa. Use Yarn C to duplicate stitch on the Yarn D Motif. For a Duplicate Stitch Tutorial see page 11.

ASSEMBLY

Place two Motifs with RS facing and whip stitch one edge together, note: turn every adjacent Motif a quarter turn. Repeat this for every Motif leaving an opening of approximately 13 sts at last Motif. Insert foam rubber cube and close opening using whip sts.

To finish: fasten off and weave in all ends.



Materials

Scheepjes Colour Crafter

(100% Premium Acrylic; 100g/300m)

Yarn A: 1026 Lelystad x 1 ball

Yarn B: 1114 Eindhoven x 1 ball

Yarn C: 1709 Burum x 1 ball

Yarn D: 1820 Goes x 1 ball

Yarn E: 1722 Alphen x 1 ball

Yarn F: 1062 Dordrecht x 1 ball

3mm knitting needles

Stitch markers

5 foam blocks 10 x 10 x 10cm

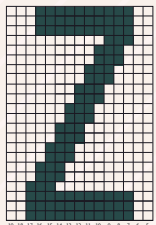
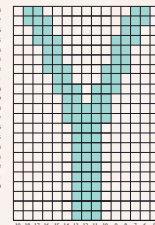
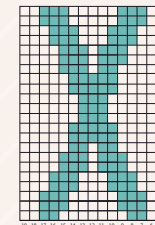
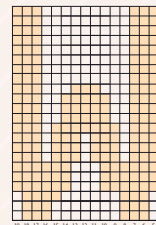
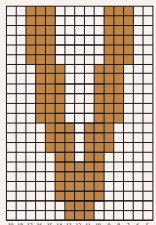
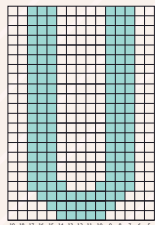
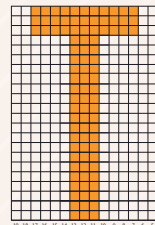
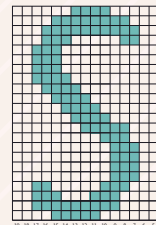


PHOTO 1



P1

P6

PHOTO 2



P2

P3

PHOTO 3



P4

P5

TODDLER FIDGET BOOK

BY ELIZABETH BARRACLOUGH

Pattern Notes

Construct pages individually before compiling them back to back in pairs and binding. When using any of the Materials for the first time, please refer to manufacturer's instructions. Use Prym Fray Check throughout to prevent ends of ribbon, cord and trims from fraying. Allow 1cm edge around shapes cut out of Bondaweb. See photos for applicable material.

Abbreviations

∅ diameter

LHS left hand side

LS long side(s)

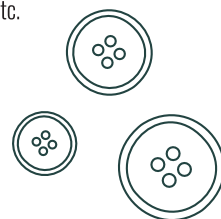
P1, P2 page 1, page 2 etc.

RHS right hand side

RS right side

SS short side(s)

WS wrong side



Instructions

P1 - FRONT COVER see Photo 1

Step 1 Iron interfacing to WS of fabric and cut to 15 x 15cm to make P1.

Step 2 Trace a \varnothing 10cm hexagon on Bondaweb, cut and fuse to WS of contrasting fabric. Cut out.

Step 3 Cut 6 x 5cm pieces of ribbon, fold in half and iron to hold folds. Place 1cm beneath hexagon at each side on P1. Iron hexagon onto P1 and zigzag stitch around edges to secure.

Step 4 Cut 20cm of elastic cord. Place horizontal on P1 at mid of hexagon. Zigzag stitch on one end to secure, thread 50mm button, stretch elastic slightly before sewing other end to secure.

P2 - BUTTON MAZE see Photo 2

Step 1 Iron interfacing to WS of fabric and cut to 15 x 15cm to make P2.

Step 2 Pin 8cm wide tulle centrally to create vertical panel. Sew along both LS and one SS 3mm from edge.

Step 3 Cut 4 x 4.5cm pieces of ribbon. Fold one end of each piece 0.5cm and iron to hold folds. Place ribbon on alternate sides of tulle, raw edges in line with edge of tulle panel and sew in place.

Step 4 Insert small buttons through tulle panel open end. Sew remaining SS of tulle panel closed.

Step 5 Cut 2 x 15cm pieces ribbon. Place over both LS of tulle panel and sew in place. Sew ric rac on top of 15cm ribbon pieces.

P3 - SLIDING BEADS see Photo 2

Step 1 Iron Bondaweb to WS of fabric, fuse WS to felt sheet and cut to 15 x 15cm to make P3.

Step 2 Mark placement of eyelets on fabric, forming a hexagon shape.

Step 3 Make holes in fabric and insert eyelets. Thread nylon cord through eyelets and add beads as per photo 3. Ensuring nylon cord flat and taut (not too tight), hand-sew ends to edge of WS of P3 to secure.

P4 - SHAPE MATCHER see Photo 3

Step 1 Iron interfacing to WS of fabric and cut to 15 x 15cm to make P4.

Step 2 Cut 2 x 15cm pieces of ribbon. Place on P4 to make cross and sew edges to secure.

Step 4 Trace 3 x 4cm squares, 3 x \varnothing 4cm circles, 3 x \varnothing 4cm triangles and 3 x \varnothing 5cm hexagons on Bondaweb, cut and fuse to felt. Cut out shapes along trace line.

Step 5 Cut 4 square pieces of Velcro tape. Separate loop side from hook side to make 8 pieces. Sew hook sides to RS of 1 of each felt shape. Place these 4 shapes, velcro facing up, on P4 as per photo 4. Iron onto P4 and top stitch around edges to secure.

Step 6 Sew loop sides to RS of another 1 of each felt shape. Place WS onto WS of remaining felt shapes and iron together. Sew around edges to secure.



SHOPPING LIST

TODDLER FIDGET BOOK

1 Tissu de Marie fat quarter pack
(item no. 96590)

4 sheets 20x30cm felt
(item no. 10100-022)

Fabric scraps

15cm x 8cm tulle

10 x 10mm Opry silicone beads
(item no. 64531-AST3)

50mm button 2-holes

6 small buttons

15cm non-separating zipper
(item no. VN15-10-849)

Zipper pull
(item no. 96647-693)

2m of 18mm bias binding
(item no. 7440-693)

2m of 10mm grosgrain ribbon
(item no. 60903)

50cm of 3mm elastic cord
(item no. 522134-693)

60cm nylon cord
(to fit through silicone beads) >



PRETTY LITTLE THINGS



30cm ric rac
(item no. 200607-5-J025)

1 pack Opry crinkle material
(item no. 64280)

0.5m iron-on interfacing
(item no. 229010)

0.5m Bondaweb
(item no. 236010)

Wadding
(item no. 240050)

8cm of 20mm sew-on Velcro tape
(item no. 10204-009)

6 eyelets
(item no. 542410)

Prym Fray Check (optional)
(item no. 968.020)

Clover Quick Yo-Yo Maker 30mm
(optional) (item no. CL8700)

Sewing thread in matching colours

Heavy-duty sewing machine
+ supplies

P5 - DINGLE DANGLES see Photo 3

Step 1 Iron Bondaweb to WS of fabric, fuse WS to felt sheet and cut to 15 x 15cm to make P5.

Step 2 Make holes in P5 for 2 eyelets; 4.5cm and 3cm from top of P5, 5cm apart.

Step 3 Make 4 yo-yos in contrasting fabric.

Step 4 Cut a 20cm piece of elastic cord and thread through eyelets as per photo 5. Hand-sew first cord end to WS of first yo-yo and overstitch second yo-yo to first yo-yo, WS facing each other. Attach remaining yo-yos to second cord end as per first cord end.

P6 - BACK COVER see Photo 1

Step 1 Make tabs to cover zipper ends by cutting 2 pieces of scrap fabric to 5 x 10cm. Fold over all SS to make 0.5cm seam and iron to hold folds. Fold both pieces in half, WS facing, so SS meet and iron to hold folds. Place them over both ends of zipper and sew using zipper foot to secure.

Step 2 Iron interfacing to WS of 2 contrasting pieces of fabric and cut both to 20 x 20cm. Fold in half, WS facing, to make triangles and iron to hold folds.

Step 3 Position LS of first triangle over first zipper edge, 0.5cm from teeth, and top stitch along edge to secure. Repeat for second edge to make P6.

Step 4 Trim P6 to 15 x 15cm ensuring corners are in line with zipper teeth. Attach zipper pull to zipper.

COMPILING PAGES

Step 1 Iron Bondaweb to a sheet of felt. Fuse felt to wadding and cut to 15 x 15cm.

Step 2 Cut 2 pieces of wadding to 15 x 15cm.

Step 3 Cut 3 pieces of crinkle material to 15 x 15cm.

Step 4 Layer pages into 3 piles as follows:

Pile 1 - P1 RS down, crinkle material, wadding, P2 RS up.

Pile 2 - P3 RS down, crinkle material, wadding, P4 RS up.
Pile 3 - P5 RS down (eyelets at top), crinkle material, wadding with felt (felt facing up), P6 RS up (zipper pull top right).

Step 5 Align pages carefully and tack around all edges.

MAKE SPINES

Step 6 Make Inner Spine by cutting a 24 x 11cm piece of fabric. Fold in half, RS facing, so SS meet. Sew SS to make a tube. Iron open seam and turn RS out. Iron flat so opened seam runs along middle.

Step 7 Make Outer Spine by ironing interfacing to fabric and cutting to 25 x 7.5cm. Fold in half, RS facing, so SS meet. Sew LS starting at fold moving down, then SS. Cut notch in corners before turning RS out, iron flat.

ASSEMBLY see Photo 4

Step 8 Place Pile 1, P1 facing up, between Outer and Inner Spines (Outer Spine on top) lining up raw edges with LHS of P1. Tack in place. Sew Spines to Pile 1, 1cm from LHS.

Step 9 Cut 70cm bias binding, pin around all edges of Pile 1 (do not alter positioning of Spines) starting mid LHS and sew to secure (raw edge of binding will be covered by Spine).

Step 10 Turn over Pile 1 so P2 is facing up. Measure 5cm from RHS and mark at top and bottom of Inner Spine.



Step 11 Cut 70cm bias binding and attach to Pile 2, P3 facing up, as per Pile 1.

Step 12 Place Pile 1 atop Pile 2 with P2 and P3 facing each other, P4 facing up.

Step 13 Place Inner Spine atop P4 with 5cm marks aligned with RHS edge. Bind RHS edge with Inner Spine; pin and sew 1cm from edge to secure.

Step 14 P4 facing up, measure 5cm from RHS and mark at top and bottom of Inner Spine. Cut Inner Spine to 5cm.

Step 15 Cut 70cm bias binding and attach to Pile 3, P5 facing up, leaving LHS unbound and 10cm excess binding at top left and bottom left corners.

Step 16 Place Piles 1, 2 and 3 on top of each other with all pages in correct order, P1 facing up. Fold Inner Spine (between P4 and P5) to align raw edge with unbound edge of Pile 3. Tack to hold in place and sew 1cm from edge to secure.

Step 17 Sew 10cm bias binding ends along unbound edge of Pile 3.

Step 18 Fold Outer Spine around to P6, position to cover stitch line created by Inner Spine and sew to secure.



PHOTO 4

Duplicate Stitch Tutorial

HOW TO: DUPLICATE STITCH

A super user-friendly stitch and a straight-forward alternative to knitted stranded colourwork, Duplicate Stitch allows you to add colour, text, or a design to your items knitted in Stocking Stitch! Plus the results are brilliant!

- 1 Thread a darning needle with yarn that is in the same thickness as your project



- 2 From the back/'wrong side' of your project, insert the needle at the bottom of the 'v' where your stitch is to be placed



- 3 Next thread the needle beneath the stitch above



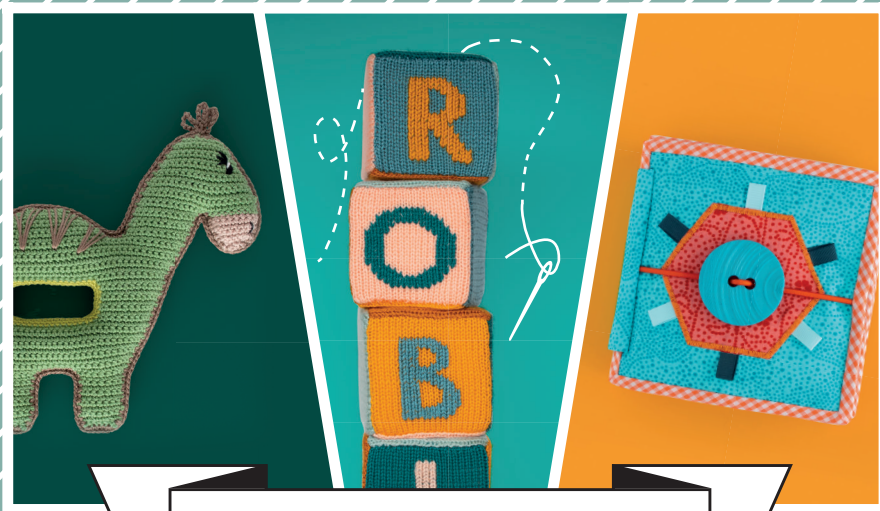
- 4 Then pass the needle back through the bottom of the stitch where you started, creating a 'false stitch' on top



- 5 Continue in this fashion working bottom up!



PRETTY LITTLE THINGS



CHECK OUT THE SCHEEPJES WEBSITE
FOR MORE FUN PATTERNS!

© WWW.SCHEEPJES.COM

For errata information please visit:
www.scheepjes.com/en/errata



8 717738 659203