



Scheepjes
INSPIRATION IN EVERY BALL OF YARN



#SCHEEPJESKAL2022

#SASSENACHKAL

Week 10

© Scheepjes.com. This pattern is available for unlimited personal use. You may print a copy of the pattern or keep a digital copy for personal use only. Do not reproduce this pattern or sell this pattern (either digitally or in print). This document may not be posted online, either as a complete document or in part. You are allowed to sell items that are made using this pattern as long as the designer is credited. Please do not print copies to distribute with yarn sales as this is an infringement of copyright.



Instructions

Cont to work in st st throughout.
 Cont working from Knitting Charts 32-33, working each round of chart on each needle (see Chart Notes).
 Complete each chart before moving onto the next.
 Join and break yarn as needed throughout.

To finish

After working last round of final chart, break all yarns except Yarn B for Claire version. Change to 2.5mm needle.

Round 1 (RS) Knit.

Round 2 (RS) K1, tightly cast off next 140 sts, k to end, turn. [144 sts]

Zip flap

Work rem 144 sts back and forth in rows.

Row 3 (WS) Sl1p, p to last st, k1, turn. [144 sts]

Row 4 (RS) Sl1p, k to end, turn.

Row 5 Sl1p, p to last st, k1.

Row 6 Cast off first st, k to end. [143 sts]

Row 7 Cast off first st, p to last st, k1. [142 sts]

Row 8 Sl1p, k to end.

Row 9 Sl1p, p to last st, k1.

Tightly cast off all sts kwise, leaving long yarn tail.

Key

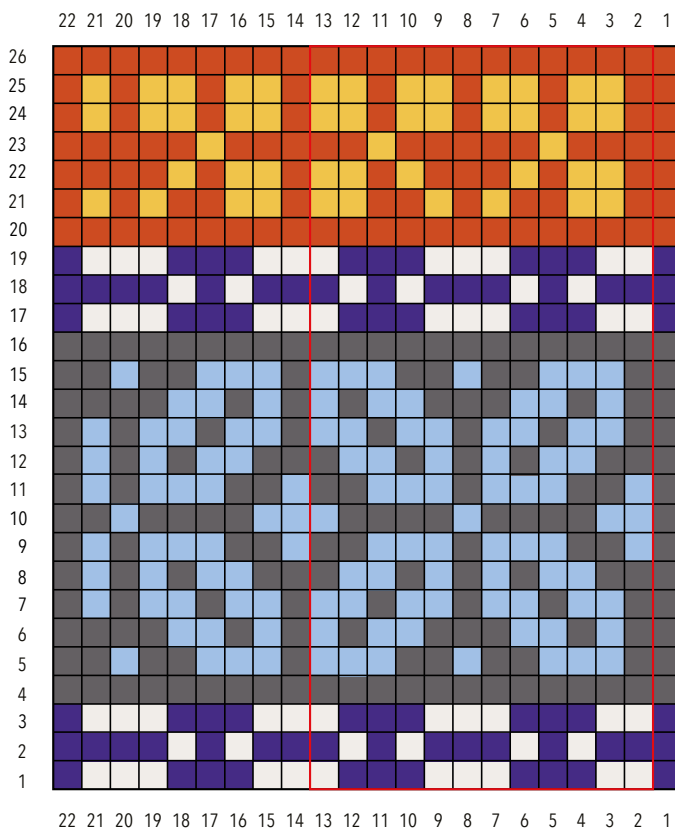
	Yarn A		Yarn D
	Yarn B		Yarn E
	Yarn C		Yarn F

To finish

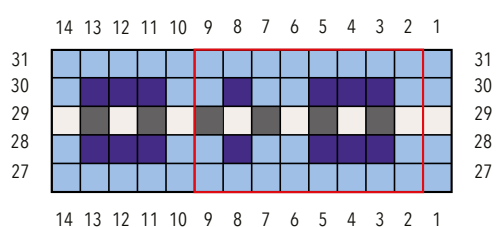
Wash and block to measurements.
 Weave in all ends except final tail from cast-off edge.
 Using a wool setting, iron first cast-off edge so that it does not curl up, followed by second. Pin zipper along second cast-off edge and st in place using matching thread. Open zipper and pin other side to first cast-off edge and st in place in same way. St corners of Cushion Cover closed using cast-off yarn tail. Weave in any rem ends. Iron zipper edges to neaten.
 Insert cushion insert.

For tutorial see newleafdesigns.nl/kal-zipper-english

Knitting Chart 32



Knitting Chart 33





Instructions

Cont to work in st st throughout.
 Cont working from Knitting Charts 32-33, working each round of chart on each needle (see Chart Notes).
 Complete each chart before moving onto the next.
 Join and break yarn as needed throughout.

To finish

After working last round of final chart, break all yarns except Yarn B for Claire version. Change to 2.5mm needle.

Round 1 (RS) Knit.

Round 2 (RS) K1, tightly cast off next 140 sts, k to end, turn. [144 sts]

Zip flap

Work rem 144 sts back and forth in rows.

Row 3 (WS) Sl1p, p to last st, k1, turn. [144 sts]

Row 4 (RS) Sl1p, k to end, turn.

Row 5 Sl1p, p to last st, k1.

Row 6 Cast off first st, k to end. [143 sts]

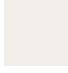





Row 7 Cast off first st, p to last st, k1. [142 sts]

Row 8 Sl1p, k to end.

Row 9 Sl1p, p to last st, k1.

Tightly cast off all sts kwise, leaving long yarn tail.

Key

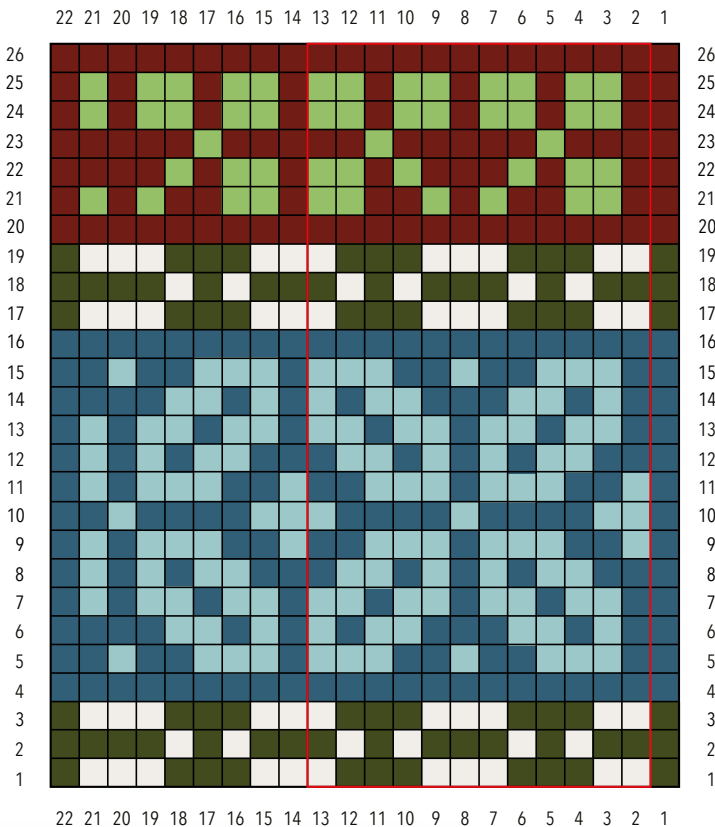
	Yarn A		Yarn D
	Yarn B		Yarn E
	Yarn C		Yarn F

To finish

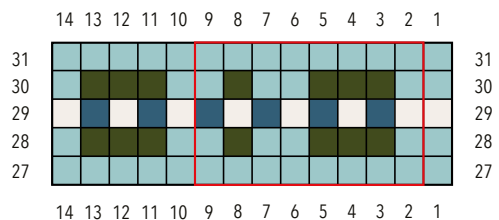
Wash and block to measurements.
 Weave in all ends except final tail from cast-off edge.
 Using a wool setting, iron first cast-off edge so that it does not curl up, followed by second. Pin zipper along second cast-off edge and st in place using matching thread. Open zipper and pin other side to first cast-off edge and st in place in same way. St corners of Cushion Cover closed using cast-off yarn tail. Weave in any rem ends. Iron zipper edges to neaten.
 Insert cushion insert.

For tutorial see newleafdesigns.nl/kal-zipper-english

Knitting Chart 32



Knitting Chart 33



Instructions

Cont to work in st st throughout.
 Cont working from Knitting Charts 32-33, working each round of chart on each needle (see Chart Notes).
 Complete each chart before moving onto the next.
 Join and break yarn as needed throughout.

To finish

After working last round of final chart, break all yarns except Yarn B for Claire version. Change to 2.5mm needle.

Round 1 (RS) Knit.

Round 2 (RS) K1, tightly cast off next 140 sts, k to end, turn. [144 sts]

Zip flap

Work rem 144 sts back and forth in rows.

Row 3 (WS) Sl1p, p to last st, k1, turn. [144 sts]

Row 4 (RS) Sl1p, k to end, turn.

Row 5 Sl1p, p to last st, k1.

Row 6 Cast off first st, k to end. [143 sts]

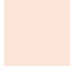





Row 7 Cast off first st, p to last st, k1. [142 sts]

Row 8 Sl1p, k to end.

Row 9 Sl1p, p to last st, k1.

Tightly cast off all sts kwise, leaving long yarn tail.

Key

	Yarn A		Yarn D
	Yarn B		Yarn E
	Yarn C		Yarn F

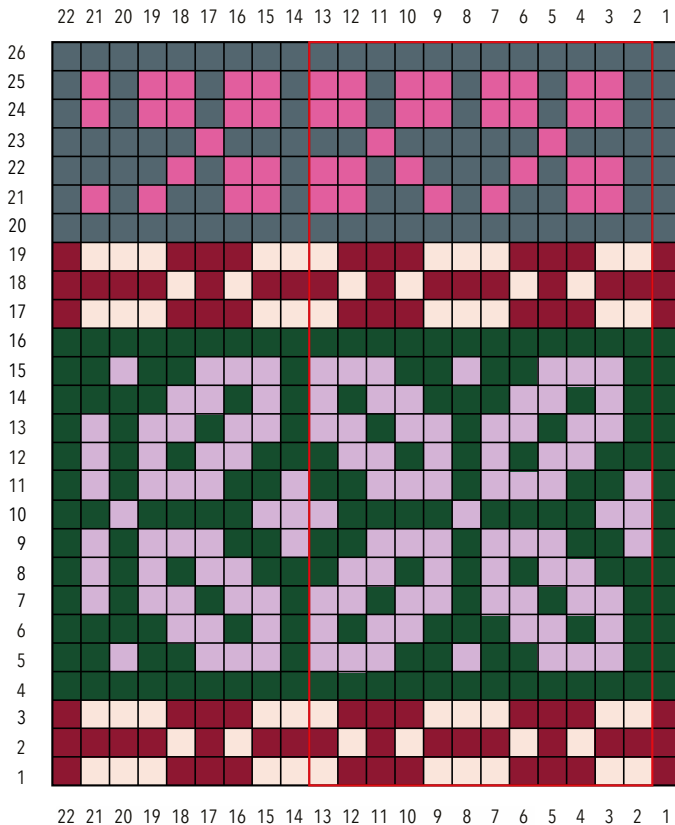


To finish

Wash and block to measurements.
 Weave in all ends except final tail from cast-off edge.
 Using a wool setting, iron first cast-off edge so that it does not curl up, followed by second. Pin zipper along second cast-off edge and st in place using matching thread. Open zipper and pin other side to first cast-off edge and st in place in same way. St corners of Cushion Cover closed using cast-off yarn tail. Weave in any rem ends. Iron zipper edges to neaten.
 Insert cushion insert.

For tutorial see newleafdesigns.nl/kal-zipper-english

Knitting Chart 32



Knitting Chart 33

