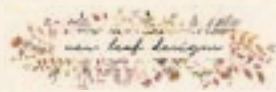




*Scheepjes*  
INSPIRATION IN EVERY BALL OF YARN



**#SCHEEPJESKAL2022**

**#SASSENACHKAL**

## Tips & Tricks

© Scheepjes.com. This pattern is available for unlimited personal use. You may print a copy of the pattern or keep a digital copy for personal use only. Do not reproduce this pattern or sell this pattern (either digitally or in print). This document may not be posted online, either as a complete document or in part. You are allowed to sell items that are made using this pattern as long as the designer is credited. Please do not print copies to distribute with yarn sales as this is an infringement of copyright.



## Sassenach Knit-A-Long

This Tips & Tricks document contains all the information you will need to start this KAL, including Materials, Gauge/Tension, Measurements, Abbreviations, Pattern Notes and Chart Notes. It also includes details on special techniques used in this pattern, instructions to making a gauge swatch, and further information including skill level, links to extra supporting material and the inspiration behind each cushion cover design. Please refer to this document during each week of the KAL.

### Design Details + Inspiration

*A note from the designer, Carmen Jorissen:*

Designing these cushion covers was truly a joy. Before I started swatching, I already knew that I wanted Jamie's cushion to incorporate traditional Fair Isle motifs, and patterns inspired by tartan fabrics. The thistle is the national flower of Scotland, so of course, I wanted to include that as well. For Claire, I designed botanical patterns to symbolise her knowledge of healing herbs. I also included vines, clovers, and the rose, England's national flower. Fans of the show may notice the little waves framing the clovers, symbolic of the pair's many journeys overseas. There are also designs symbolising Jamie's mother's pearls which he gave to Claire, and the gemstones needed to travel through the stones. Can you find them?

### Skill Level

This pattern is aimed at intermediate to advanced knitters. It is also suitable for intermediate knitters who are new to colourwork, thanks to detailed video tutorials and blogposts which will be provided by Carmen throughout the KAL.



## Yarns

### Scheepjes Metropolis

(75% Extra Fine Merino Wool, 25% Nylon; 200m/50g)

#### • Cirsium colourway:

Yarn A: 067 Buenos Aires x 3 balls (2 x 50g; 1 x 10g)

Yarn B: 004 Kabul x 2 balls

Yarn C: 035 Seoul x 2 balls

Yarn D: 007 Philadelphia x 2 balls

Yarn E: 064 Kraków x 2 balls

Yarn F: 069 Miami x 2 balls

#### • Rosa colourway:

Yarn A: 073 Izmir x 3 balls (2 x 50g; 1 x 10g)

Yarn B: 019 Marseille x 2 balls

Yarn C: 023 Monterrey x 2 balls

Yarn D: 026 Depok x 2 balls

Yarn E: 042 Lagos x 2 balls

Yarn F: 008 Beirut x 2 balls

#### • Erica colourway:

Yarn A: 056 Almaty x 3 balls (2 x 50g; 1 x 10g)

Yarn B: 006 Taipei x 2 balls

Yarn C: 051 Marrakech x 2 balls

Yarn D: 057 Milan x 2 balls

Yarn E: 017 Multan x 2 balls

Yarn F: 016 Karachi x 2 balls

## Other Materials

- 2.5mm circular knitting needle 80cm
- 2 x 3mm circular knitting needles 80cm\*
- 2 x 60cm zips (*included in kit*)
- 2 x cushion inserts (50 x 50cm)
- Sewing needle + matching thread
- Stitch markers (*optional*)

\*See explanation below about knitting needles and techniques



## Gauge/Tension

29 sts and 34 rounds to measure 10 x 10cm over colourwork patt using 3mm needles

See Chart for Gauge Swatch on pages 6-10.

### Gauge Swatch Instructions

It is important to ensure that your Gauge/Tension matches the information given here so your finished result is the correct size and does not require additional yarn to make. See below for gauge swatch instructions, and how to achieve the correct Gauge/Tension.

With Yarn B, cast on 80 sts using Judy's Magic Cast On. [40 sts per circular needle]

Swatch is worked in the round and using st st (see Abbreviations below).

**Round 1 (RS)** Knit. *Note: k through back loop of first half of sts to untwist them in Round 1 only, except for first st: k as normal.* [80 sts total]

**Rounds 2-44 (RS)** Knit as per chart for each side (*rep chart twice per round*).

Cast off all sts kwise, do this rather tightly.

**Do not** break yarn (it may be required for Cushion Cover, see Pattern Notes).

### How to achieve the correct Gauge/Tension

If your swatch ends up larger than the Gauge/Tension shown above, reduce your needle size by 0.5mm, undo and remake your swatch. Repeat this step if needed until the correct measurements are achieved.

If your swatch ends up smaller than the Gauge/Tension shown above, increase your needle size by 0.5mm, undo and remake your swatch. Repeat this step if needed until the correct measurements are achieved.

## Measurements

Cushion Cover: 49 x 49cm after blocking

*Note: read below for more information and instructions on blocking this Cushion Cover.*

Gauge Swatch: 13cm height x 14cm width, unblocked

## Abbreviations

[ ] number of sts on a given round/row

**beg** begin(ning)

**k** knit

**kwise** knitwise

**patt(s)** pattern(s)

**p** purl

**rem** remaining

**rep** repeat(ing)

**RS** right side

**sl1p** slip 1 st purlwise

**st(s)** stitch(es)

**st st** stocking stitch: RS knit, WS purl

**WS** wrong side



## Pattern Notes

Cushion Cover is worked bottom up and in the round using st st (k every round).

Patt is worked using stranded colourwork technique: alternate two yarn colours per round and carry the unused colour across WS of your work.

Cast on with two circular needles using Judy's Magic Cast On method (see Special Techniques section below), so that Cushion Cover is already joined at bottom edge and forms a 'pocket'. Alternatively, use one 3mm circular needle, 150cm long, if you prefer to use the magic loop technique (see Knitting Needles section below).

After working final chart, cast off sts of one side only. Continue to work flat in st st (RS k; WS p) across other side to complete Zip Flap, which will be folded over to meet other cast-off edge before zip is stitched in place (see Carmen's video tutorials and blogposts, linked in each pattern part).

The yarns listed in Materials create two separate Cushion Covers with complementary colourwork designs. Follow Knitting Charts 1-17 for Jamie version (Weeks 1-5) and Knitting Charts 18-32 for Claire version (Weeks 6-10). See Chart Notes for explanation about different versions.

Gauge/Tension is critical in this pattern: check it is consistent as you go, as a looser tension will require additional yarn.

## Chart Notes

Follow knitting charts for all colour changes. Read charts from right to left for every round.

Charts are worked for front and back of Cushion Cover as follows: beg with first needle, \*follow chart to end of outlined repeat box, repeat outlined sts until number of sts left on first needle matches number of sts on left side of repeat box, work final sts of chart to complete first side; rep from \* for second side (second circular needle) of Cushion Cover.

## Special Techniques

### Judy's Magic Cast On

This method of casting on is most commonly used for toe-up socks. It is also loved by designers who want a seamless start to knitted projects worked in the round. While any cast-on method can be used to make a cushion cover, the advantages of using Judy's Magic Cast On are that it is quicker than, for example, a long-tail cast on, there's no seaming required for this cast-on edge, and once the cushion is knitted, this cast-on edge will be invisible! It is a really useful technique to have in your knitting skillset. See Carmen's blogposts and videos via the links below to learn the technique.

### Knitting Needles

For this Cushion Cover design, the number of stitches to cast on is particularly high. To accommodate this, Carmen uses two separate 3mm circular needles, each measuring 80cm long. Half of the stitches (for Front) will be cast onto one needle, and the other half of the stitches (for Back) will be cast onto the second needle. Work across the first half of stitches on the front needle, using the needle tip from the other end of the same circular, then turn and work across the second half of stitches on second needle, using the needle tip from the other end of that same needle.

It's also possible to use a single 150cm long circular needle and the magic loop technique; however, this is only recommended for knitters with prior experience working in magic loop.

### Working with Yarn Floats

When using the stranded colourwork technique for this project, you alternate between two different colours in each round. Whenever one colour is used, the other is stranded across the back (or WS), creating what's called a 'float'. If the floats are too tight, the fabric will pucker, so it is important to make sure your floats are relaxed. To do this, pull the stitches on your right-hand needle horizontally every so often. Some knitters may do this automatically when moving the stitches around on their needles, but it's worth paying extra attention to this when you are starting out with colourwork.

### Blocking

After making each Cushion Cover, blocking is recommended. This simple process is key to evening out the stitches and transforming your knitted colourwork. If you don't have prior experience with blocking knitted projects, you'll be surprised by the results!

The wet blocking method is advised for all Scheepjes yarns:

1. Fill a bowl or sink with lukewarm water (optional: add some wool wash for extra softness)
2. Submerge Cushion Cover in water and leave until completely soaked through (approx. 30 minutes)
3. Gently squeeze out water (do not wring or stretch)
4. Roll Cushion Cover between two cotton towels and press excess water out; repeat this step with dry towels if necessary to remove more water
5. Position Cushion Cover on blocking mat (or other soft, flat surface) and carefully straighten out edges to measure 49 x 49cm, pin in place with rust-free blocking pins or wires
6. Leave until completely dry before removing pins or wires

### Support Materials

For this KAL, the designer will share a selection of video tutorials and weekly blogposts to correspond with each pattern part. Links for these are listed below.

Visit Carmen's blog via this link: [newleafdesigns.nl](http://newleafdesigns.nl)

Find video tutorials via these links:

**English** [newleafdesigns.nl/kal-tips-tricks-video-english](http://newleafdesigns.nl/kal-tips-tricks-video-english)

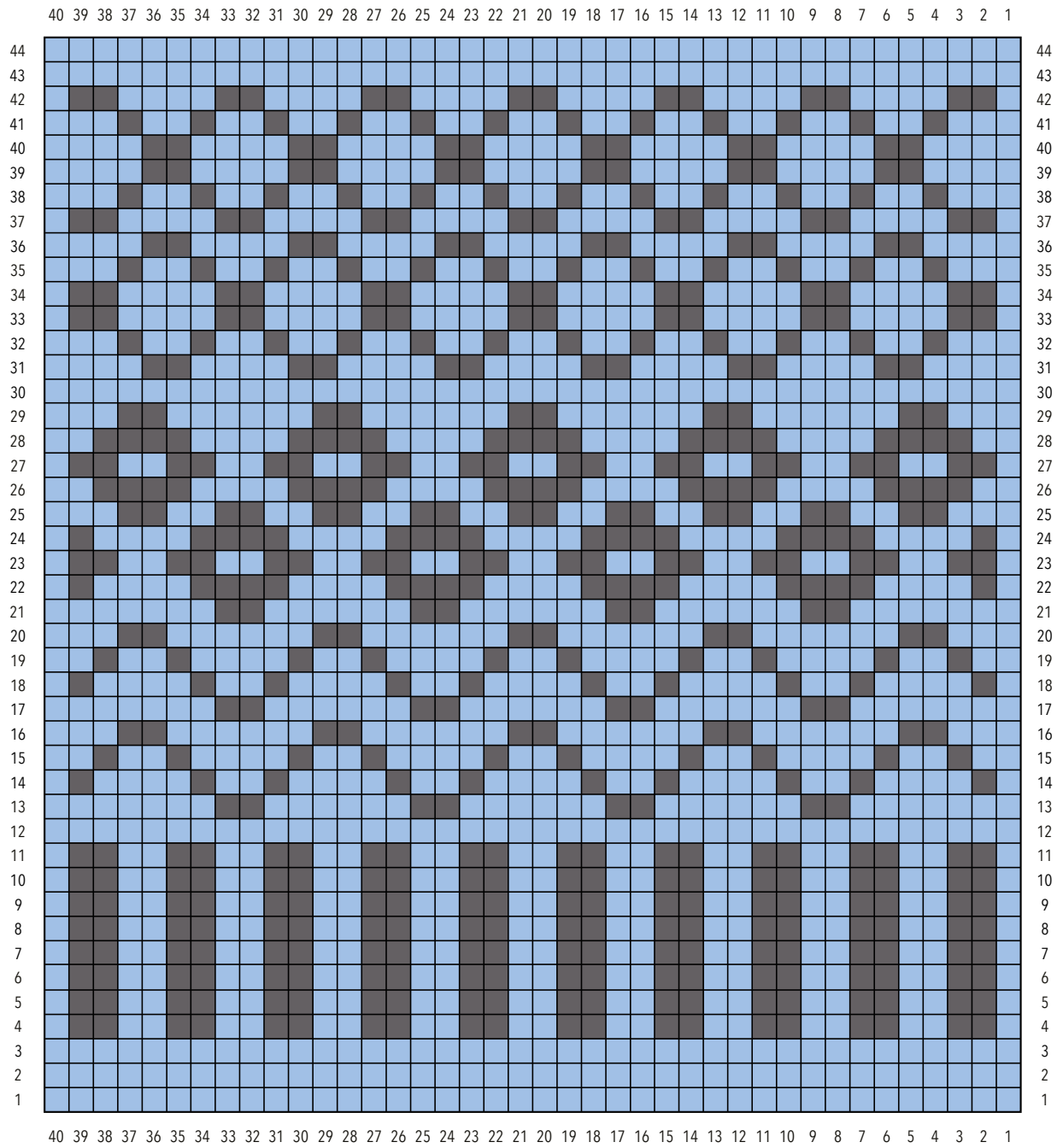
**Dutch** [newleafdesigns.nl/kal-tips-tricks-video-dutch](http://newleafdesigns.nl/kal-tips-tricks-video-dutch)







### Gauge Swatch



### Key

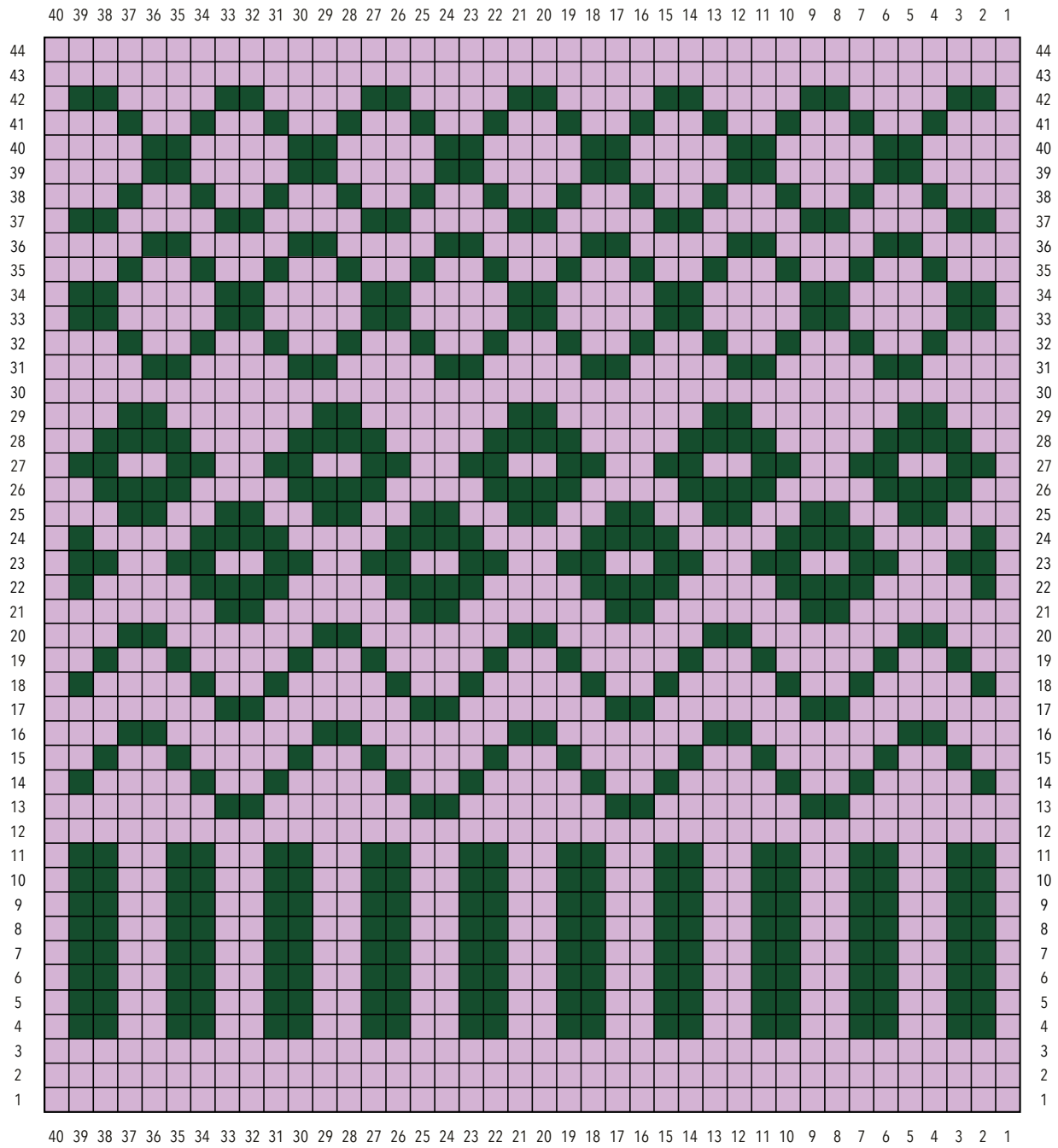
- Yarn B
- Yarn F







### Gauge Swatch



### Key

- Yarn B
- Yarn F

