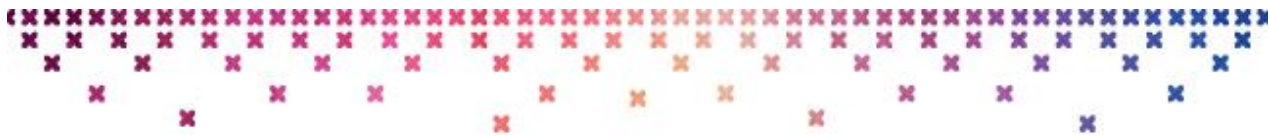


US TERMINOLOGY - WEEK 13/14



# Hygge

CAL 2017



Week 13/14

Designed by :

**HAAK MAAR RAAK**

[www.haakmaarraak.nl](http://www.haakmaarraak.nl)

Made possible by :

*Scheepjes*  
INSPIRATION IN EVERY BALL OF YARN

Pattern copyright © Scheepjes.com. This pattern is available for unlimited personal use. You may print a copy of the pattern or keep a digital copy for personal use only. Do not reproduce this pattern or sell this pattern (either digitally or in print). This document may not be posted online, either as a complete document or in part. You are allowed to sell items that are made using this pattern as long as the designer is credited. Please do not print copies to distribute with yarn sales as this is an infringement of copyright.

1



## Stitches (US)

- × ch – chain
- × sc – single crochet
- × drop st – dropped stitch (insert hook in base of st 2 rows below, pull up a loop, yarn over, pull through all loops on hook).
- × p – picot (\*ss, ch2, ss\* in same stitch)
- × RS – right side
- × ss – slip stitch
- × st – stitch
- × WS – wrong side

**Yarns** – See color table for colors used.

## Tips and Tricks

- × The edges might be a bit wider compared to the body of the shawl, because it has more stretch. This will be corrected with blocking.
- × Don't work your drop stitches too loose or too tight (i.e. it should not be snaggy, nor pull on your stitches).

**Hook size** – 4.5 mm (US Size 7)

**Gauge** – 19 sc and 19 rows = 10 cm (4 in).

## Pattern

**Round 1 : (RS)** Take **SW** and start in the bottom right corner of your shawl, in the starting chain. Join with ss, ch1, (1sc, ch2, 1sc) in corner st, 1sc in each of next 303 rows, (1sc, ch2, 1sc) in next corner, 57sc, (1sc, ch2, 1sc) in next corner, 1sc in each of next 303 rows, (1sc, ch2, 1sc) in next corner, 57sc, join with ss in first st. (305 sc on long sides, 59 sc on short sides)

**Round 2:** ch1, 1sc in same st, (1sc, ch2, 1sc) in corner space, 305sc, (1sc, ch2, 1sc) in corner space, 59sc, (1sc, ch2, 1sc) in corner space, 305sc, (1sc, ch2, 1sc) in corner space, 58sc, ss to first sc. (307sc on long sides, 61sc on short sides)

**Round 3:** ch1, 1sc in same st, 1sc in next st, (1sc, ch2, 1sc) in corner space, 307sc, (1sc, ch2, 1sc) in corner space, 61sc, (1sc, ch2, 1sc) in corner space, 307sc, (1sc, ch2, 1sc) in corner space, 59sc, ss to first sc. Fasten off. (309sc on long sides, 63sc on short sides)  
*You are now going to work on the short side of the shawl only. Work in rows – your colored rows are on the RS and your SW rows are on the WS of your shawl, with the exception of the last row.*

**Row 4: (RS)** Attach **SW** in the right corner space of the shawl with a ss, ch1, 1sc in corner space, 63sc, 1sc in the corner space, ch1, turn.

**Row 5: (WS)** 65sc, cut yarn.

Pattern copyright@Scheepjes.com. This pattern is available for unlimited personal use. You may print a copy of the pattern or keep a digital copy for personal use only. Do not reproduce this pattern or sell this pattern (either digitally or in print). This document may not be posted online, either as a complete document or in part. You are allowed to sell items that are made using this pattern as long as the designer is credited. Please do not print copies to distribute with yarn sales, as this is an infringement of copyright.

**Row 6 (RS):** Join **H** with a ss, ch1, 1sc in the next st, 1sc in each of the next 3 st, \*drop st, 3sc; repeat from \* another 14 times, 1sc, cut yarn.

**Row 7:** Join **SW** with a ss, ch1, repeat Row 5.

**Row 8:** Join **I** with a ss, ch1, 1sc in same st, 1sc in each of the next 5 st, \*drop st, 3sc; repeat from \* another 13 times, 3sc, cut yarn.

**Row 9:** Join **SW** with a ss, ch1, repeat Row 5.

**Row 10:** With **J**, repeat Row 6.

**Row 11:** Join **SW** with a ss, ch1, 65 sc, ch1, turn.

**Row 12:** \*p, ss; repeat from \* another 31 times, p, cut yarn. Fasten off.

Repeat Rows 4-12 for the other short side. Weave in all ends.





If you plan on lining your shawl, be sure to block it to size first (instructions on blocking can be found in the Tips & Tricks document). After blocking, leave the shawl to rest for one or two days so it has plenty of time to resize to its final measurements. In the meantime, prewash your fabric (to accommodate for shrinkage) and iron it flat.

## Colour table

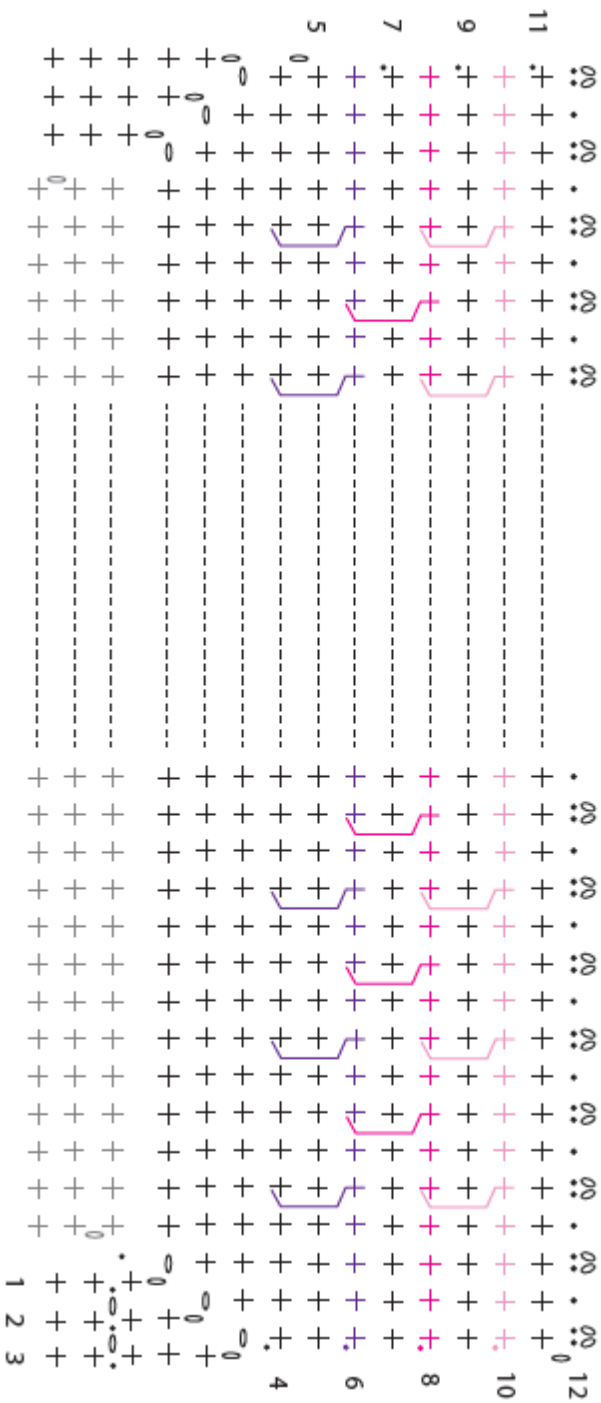
Yarns	Stone washed	Catona (25 gr)										
		A	B	C	D	E	F	G	H	I	J	
<b>Abbreviation</b>	SW											
<b>Pastel</b>	801	264	414	403	402	212	406	172	179	409	408	
<b>Jewel</b>	802	258	130	411	401	412	391	128	400	396	394	
<b>Rainbow</b>	803	115	281	208	280	205	146	201	282	114	222	
<b>Danish Mermaid</b>	805	130	392	512	205	513	389	241	253	397	509	
<b>Diagram colour</b>	+								+	+	+	

Pattern copyright@Scheepjes.com. This pattern is available for unlimited personal use. You may print a copy of the pattern or keep a digital copy for personal use only. Do not reproduce this pattern or sell this pattern (either digitally or in print). This document may not be posted online, either as a complete document or in part. You are allowed to sell items that are made using this pattern as long as the designer is credited. Please do not print copies to distribute with yarn sales, as this is an infringement of copyright.

**KEY - (US)**

-  chain
-  single crochet
-  picot
-  drop st

*Crochet Diagram*



Pattern copyright@Scheepjes.com. This pattern is available for unlimited personal use. You may print a copy of the pattern or keep a digital copy for personal use only. Do not reproduce this pattern or sell this pattern (either digitally or in print). This document may not be posted online, either as a complete document or in part. You are allowed to sell items that are made using this pattern as long as the designer is credited. Please do not print copies to distribute with yarn sales, as this is an infringement of copyright.