

NUMBER 23 | €1/£1/USD 1 | ENGLISH EDITION



# PRETTY LITTLE THINGS



## Monsters

KNIT, SEW AND CROCHET

[WWW.SCHEEPJES.COM](http://WWW.SCHEEPJES.COM)



# *Embrace your little monster*

*This chunky knit  
isn't as monstrous a  
project as it seems!*

# MONSTERS

As a child, I used to be positively terrified of what may have been lurking under my bed. Nowadays, I see monsters as fun and fascinating; a way to explore all the amazing creations my imagination conjures up! That's why they make the perfect theme for crafting, and great gifts for the little monsters in your life, too. We've put together a glorious collection with projects that can be adapted and brought to life with the use of bright colours and a little storytelling. Making cute creatures is an excellent opportunity to help little ones tackle night-time wobbles by befriending a monster instead!

Scheepjes Creative Director

*Sunny*

## TOOTHY HOODED BLANKET



By Jo Allport

### Gauge/Tension

15 sts and 30 rows to measure 10 x 10cm over moss st using 5mm needles

### Measurements

120 x 120cm

### Abbreviations

[ ] number of sts on a given row

**dec** decrease

**k** knit

**k2tog** knit 2 sts together to dec by 1 st: insert needle **kwise** into first 2 sts and knit them tog

**k3tog** knit 3 sts together to dec by 2 sts: insert needle **kwise** into first 3 sts and knit them tog

**kfb** knit front and back to increase by 1 st: insert needle **kwise** into next st; knit as normal but don't slip st from needle, instead bring needle around to back and knit through back loop of same st

**kwise** knitwise

**p** purl

**p2tog** purl 2 sts together to dec by 1 st: insert needle **pwise** into first 2 sts and purl them tog (right leaning dec)

**patt** pattern

**prev** previous

**pwise** purlwise

**rep** repeat

**RS** right side

**ssk** slip 1 st **kwise**, slip next st **kwise**, insert left needle into front of 2 slipped sts and knit them tog (left leaning dec)

**st(s)** stitch(es)

**st st** stocking stitch: RS knit, WS purl

**tbl** through back loop(s)

**tog** together

**WS** wrong side

(.....) **x times** work instructions in brackets the total number of times stated

PRETTY LITTLE THINGS



## SHOPPING LIST

Visit your local Scheepjes retailer to purchase all materials listed below, quoting the item numbers where required.

## TOOTHY HOODED BLANKET

### Scheepjes Chunky Monkey

(100% Premium Acrylic  
(Anti Pilling); 100g/116m)

**Yarn A:** 2016 Fern x 15 balls

**Yarn B:** 1246 Cardinal x 2 balls

**Yarn C:** 1263 Lemon x 1 ball

5mm knitting needles

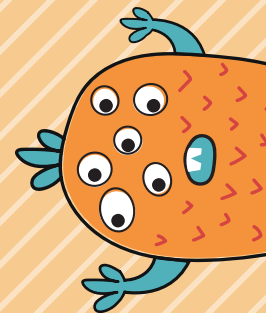
5mm circular needles, approx. 100cm  
(to accommodate number of sts)

Small amount white felt for eyes

Small amount black felt for pupils

Sewing needle + thread

Polyester stuffing for Teeth



# PRETTY LITTLE THINGS



## NOTES

Use this space to write your pattern notes!



## SCARE-FREE YARN!

Our Chunky Monkey yarn is lightweight and **hypoallergenic**, making it suitable for children and those with sensitive skin. With the addition of **anti-pilling** technology, it's also a fantastic choice for monstrous projects that need to withstand the test of time!

Made a Pretty Little Thing from one of our issues?  
We'd love to see it! Share on social media using

#ScheepjesPrettyLittleThings

## Pattern Notes

Blanket Section and Hood Section are knitted flat in separate pieces, then joined tog while edging is worked. Moss st is used throughout (always worked over an odd number of sts); see Blanket Section for moss st patt. Edging around main piece is worked back and forth in rows along two sides at a time due to number of sts. Each Tooth is made from two separate pieces, which are seamed and stuffed before being stitched to Hood.

## Instructions

### BLANKET SECTION

With 5mm circular needles and Yarn A, cast on 175 sts, **do not join**, work in rows.

**Row 1 (RS)** (K1, p1) to last st, k1. [175 sts]

**Row 2 (WS)** Rep Row 1.

Rows 1-2 set moss st patt. Rep patt until work measures 116cm from cast-on edge, ending with a WS row.

Cast off in patt.

### HOOD SECTION

With 5mm needles and Yarn B, cast on 115 sts. K 2 rows. [115 sts]

Change to Yarn A and work in moss st as follows:

**Row 1 (RS)** P2tog tbl, (k1, p1) to last 3 sts, k1, p2tog. [2 sts dec]

**Row 2 (WS)** (P1, k1) to last st, p1.

**Row 3** Ssk, (p1, k1) to last 3 sts, p1, k2tog. [2 sts dec]

**Row 4** (K1, p1) to last st, k1.

Rep Rows 1-4 until 3 sts remain, ending after a Row 4.

**Next row (RS)** Slip 2 sts onto right-hand needle as if to k2tog, k1, then pass the 2 slipped sts over the k 1. [1 st]

Fasten off.

### TOOTH PIECE

#### (MAKE 10: 2 PIECES PER TOOTH, 5 TOTAL)

With 5mm needles and Yarn C, cast on 17 sts.

Beg with a p row, work 3 rows in st st.

**Row 4 (RS)** K1, (kfb) twice, k to last 3 sts, (kfb) twice, k1. [21 sts]

**Row 5 (WS)** Purl.

**Row 6** Knit.

**Row 7** Purl.

**Row 8 (dec row)** K2, ssk, k to last 4 sts, k2tog, k2. [2 sts dec]

**Row 9** Purl.

Rep prev 2 rows until 9 sts remain, ending with a WS row.

**Next row (RS)** K2, ssk, k1, k2tog, k2. [7 sts]

**Next row (WS)** Purl.

**Next row** K2, k3tog, k2. [5 sts]

**Next row** Purl.

**Next row** K1, k3tog, k1. [3 sts]

**Next row** Purl.

**Next row** K3tog.

Fasten off.

### EDGING

Pin Hood Section to corner of Blanket Section.

Attach pieces tog while working Edging by picking

up sts through both pieces where they overlap. Work Edging along two adjoining sides of Blanket at a time (*there are too many sts to work around entire Blanket*), back and forth in rows, then rep for remaining two sides. St row ends (at Blanket corners) tog once Edging complete.

### First 2 sides

With 5mm circular needles and Yarn B, pick up and k 175 sts along first side, then pick up and k 175 sts along next side.

K 2 rows. [350 sts]

Cast off.

### Remaining 2 sides

Work remaining sides of Blanket as per first two sides.

## ASSEMBLY

Use photo as guide for placement of Teeth and eyes.

Assemble five Teeth: using two pieces for each Tooth, mattress st two sides tog, leaving cast-on edges open. Stuff and whip st closed, then attach to lower edge of Hood Section.

Using running st, attach white felt for eyes to Hood Section, and then black felt onto eyes for pupils.

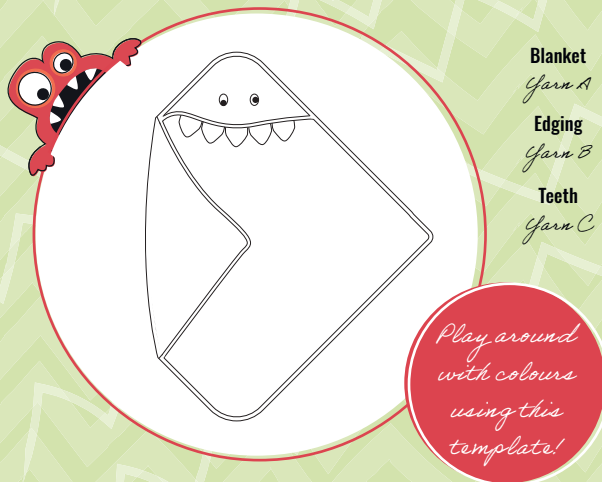
Make sure to st through Hood layer only.

## TO FINISH

Weave in all ends.

## CHOOSE YOUR OWN COLOUR PALETTE

With such a huge range of colours to choose from in our Chunky Monkey collection, it's easy for you and your little ones to select your favourite three shades. Visit [scheepjes.com](http://scheepjes.com) to browse through all 93 options!



Blanket

Yarn A

Edging

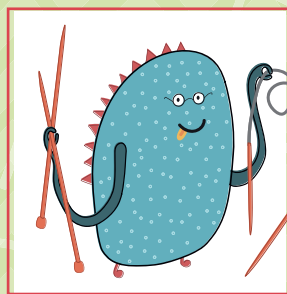
Yarn B

Teeth

Yarn C

## CIRCULAR OR STRAIGHT NEEDLES?

With so many kinds of knitting needles available, it's not always easy to know which ones to use, or why! You'll need both for this project



**Straight needles** are the standard used for knitting in rows. They are easy to use, but their limited length restricts the number of stitches they can hold.

**Circular needles** work for knitting flat and in the round. They come in lengths ranging 22-150cm and can reduce strain on your wrists from heavy projects.

# Peek-a-boo!



*A great project for practising a range of sewing techniques!*

## FANTASY MONSTER PENCIL CASE



By Liz Barraclough

### Measurements

Approx. 15 x 22cm excluding spikes and arms

### Abbreviations

∅ diameter

RS right side(s)

tog together

WS wrong side(s)

### Pattern Notes

Iron all fabric before beginning. Use Prym Wonder Tape to hold zip and zip tabs in place while sewing. Alternatively, tack in place. Use photo as guide for placement of pieces and embroidered details.

### Instructions

**Step 1** Cut 13 x 18cm piece of Bondaweb. On paper side, draw ∅ 4cm circle, ∅ 5cm circle, a tummy shape roughly half oval that is 10cm wide at bottom flat edge, curving up to a 10cm height. Fuse Bondaweb to WS of Fabric A, cut out the three shapes and set aside.

**Step 2** Tack opening end of zip tog to hold in place. Cut two 10 x 4cm pieces in each of Fabric A and interlining, fuse one of each tog. Fold short edges in by 0.5cm. Bring short edges tog to fold piece in half and press. Sandwich bottom end of zip with folds butting up to zip stopper. Attach zip foot and sew through all layers as close to fold line as possible. Pull zip tab down and repeat for top end.

**Step 3** Fuse interlining onto remaining Fabrics A, B and C. Place Fabrics A and B with WS tog and cut 25 x 18cm rectangle for front body. Fold in half, long sides tog. Round off top corners using small plate as guide, cut around curve, open out.

**Step 4** With Fabric B uppermost, mark point 12cm from bottom on left side and 17cm on right. Draw line to connect. Cut through both layers to dissect front body.

**Step 5** Place bottom body piece (Fabric B) RS facing up. Place zip RS facing down and centrally on top, lining up long edge with diagonal (zip tabs will overhang sides). Place bottom body (Fabric A) RS down on top so zip sandwiched between fabrics. Ensure zip teeth do not encroach on side seam allowance. Sew the three layers tog along diagonal edge, stopping two-thirds along to move zip pull to opposite end before continuing to end.

**Step 6** Fold lining to back, matching cut edges. Lay sewn piece with zip RS facing up. Take top body (Fabric B) and place RS down on top so that ends of diagonals align and curved edge faces downwards at an angle. Turn over so WS of zip facing. Place top body (Fabric A) RS down on top, matching position of top body (Fabric B). Sew tog as per Step 5.

**Step 7** Press fabrics away from zip and topstitch close to edge.

**Step 8** Remove backing from tummy and eye pieces and fuse to front body. Flip lining out of way and machine zig-zag around pieces. Using length of Stranded Cotton (all six strands tog), embroider eyelashes with straight stitches and stitch on buttons securely.

**Step 9** Fold Fabric A in half with RS tog and cut out five pairs of triangles 4-8cm tall. Pin and sew tog around two long sides, trim top point, turn so RS facing and press. Pin them on front of head 1-2cm apart with points facing down.

**Step 10** Fold Fabric C in half with RS tog and cut out two pairs of arms. Sew around arms, leaving straight edge open to turn through. Snip close to stitch line on curves, turn through and press. With Stranded Cotton, embroider 3 'V' shapes at end of each hand using straight stitches. Top stitch around edge. Pin arms on body front with RS tog and hands towards tummy. Fold back in line with side of body to visualise angle they will be when turned through. Fold arms back towards tummy, then sew around top body very close to edge to secure pinned pieces. Trim edges to neaten.

**Step 11** Using body shape as template, cut back body piece in Fabrics A and B. Place WS tog.

**Step 12** With zip three-quarters open, pin body back to body front with Fabric B pieces RS tog. Sew around all sides, clip bottom corners, turn through zip and press.



PRETTY LITTLE THINGS



## SHOPPING LIST

Visit your local Scheepjes retailer to purchase all materials listed below, quoting the item numbers where required.

## FANTASY MONSTER PENCIL CASE

**Tissue de Marie fabric** (100% Cotton)

**Fabric A:** Red x 1 fat quarter  
(item no. 96244-29)

**Fabric B:** Cloudy purple x 1 fat quarter  
(item no. 657-11-13)

**Fabric C:** Purple x 1 piece (25 x 25cm)  
(item no. 96244-31)

0.5m Vlieseline F220 fusible interlining  
(item no. 229010)

Bondaweb (item no. 98553)

1 spool Gütermann Sew-All thread red  
(item no. G303-200-156)

1 spool Gütermann Sew-All thread purple  
(item no. G303-200-571)

1 skein DMC Stranded Cotton embroidery  
thread red (item no. 117-MC-0321)

15cm non-separating zip  
(item no. 5C15-10-519)

1 x 6mm Prym Wonder Tape  
(optional) (item no. 987.125)

1 x 30mm coconut button checked  
(item no. 5683-48-02)

1 x 40mm coconut button checked  
(item no. 5683-64-02)

2 x 17.5mm black mother-of-pearl buttons  
(item no. 5624-28-000)

Large sewing needle

Small plate for tracing curved edges

Sewing machine with standard and zip feet

*Will you be  
my friend?*



*Create a unique toy  
with quirky and easily  
adaptable features!*



## AMIGURUMI FIVE-HORNED MONSTER



By Nienke Jongstra

### Gauge/Tension

Tension is not critical for this project, but different measurements may result in different yarn amounts needed

### Measurements

11 x 18cm

### Abbreviations (UK terms)

[ ] number of stitches on a given round/row

**blo** back loop only: insert hook under back loop only

**ch(s)** chain(s) or chain stitch(es)

**cont** continue/continuing

**dc2tog** double crochet 2 together to decrease by 1 st: (insert hook in next st, yoh, pull up loop) twice, yoh, pull through both loops

**dc** double crochet

**flo** front loop only: insert hook under front loop only

**mr** magic ring

**RS** right side

**ss** slip stitch(es)

**st(s)** stitch(es)

**WS** wrong side

**yoh** yarn over hook

(.....) x times work the instructions between brackets the total number of times stated

### Pattern Notes

Eye Section and Belly are worked back and forth in rows; turn work after each row. Remaining sections are worked using amigurumi method: work sts

continuously in a spiral without closing each round with ss. Mark first st of each round with st marker, moving it up as you go.

### Instructions

#### EYE SECTION

With Yarn C, ch13.

**Row 1 (RS)** 1dc in second ch from hook (skipped 1 ch does not count as st), 11dc, turn. [12 sts]

**Row 2 (WS)** Ch1 (does not count as st throughout), 1dc, 2dc in next st, 8dc, 2dc in next st, 1dc, turn. [14 sts]

**Rows 3-6** Ch1, 14dc.

**Row 7** Ch1, 1dc, dc2tog, 8dc, dc2tog, 1dc. [12 sts]

**Row 8** Ch1, 12dc.

Do not fasten off and cont to work edging.

**Edging round** Ch1, work dc sts evenly into sts and row ends around Eye Section, ss in first dc to join.

*Note: st count is not critical so long as sts lie flat.*

Fasten off.

#### BELLY

With Yarn B, ch13.

**Row 1 (RS)** 1dc in second ch from hook (skipped 1 ch does not count as st), 11dc, turn. [12 sts]

**Row 2 (WS)** Ch1 (does not count as st throughout), 12dc.

**Row 3** Rep Row 2.

**Row 4** Ch1, 12dc flo. [12 sts]

**Rows 5-13** Ch1, 12dc.

**Row 14** Ch1, 1dc, dc2tog, 6dc, dc2tog, 1dc. [10 sts]

**Row 15** Ch1, 10dc.

PRETTY LITTLE THINGS



### SHOPPING LIST

Visit your local Scheepjes retailer to purchase all materials listed below, quoting the item numbers where required.

#### AMIGURUMI FIVE-HORNED MONSTER

##### Scheepjes Catona

(100% Mercerised Cotton: 50g/125m)

**Yarn A:** 189 Royal Orange x 1 ball

##### Scheepjes Catona

(100% Mercerised Cotton: 25g/62.5m)

**Yarn B:** 074 Mercury x 1 ball

**Yarn C:** 105 Bridal White x 1 ball

**Yarn D:** 242 Metal Grey x 1 ball

2.5mm crochet hook

1 x stitch marker

2 x 9mm black safety eyes

(item no. 64511-09-000)

Small amount black cotton yarn for embroidered details

Polyester stuffing

# PRETTY LITTLE THINGS



## NOTES

Use this space to write your pattern notes!



### CUSTOMISE YOUR MAKE

Add a personality to your monster makes with **safety eyes**! A great alternative to embroidered eyes, they're available in many different **colours**, making it easy to customise the look and character of your new fiendish friends.

**Row 16** Ch1, 1dc, dc2tog, 4dc, dc2tog, 1dc. [8 sts]

**Row 17** Ch1, 1dc, dc2tog, 2dc, dc2tog, 1dc. [6 sts]

**Row 18** Ch1, 1dc, (dc2tog) twice, 1dc. [4 sts]

Fasten off.

## BODY

### Foot (make 2)

With Yarn A, make mr.

**Round 1 (RS)** 6dc in ring. [6 sts]

**Round 2 (RS)** 2dc in each st around. [12 sts]

**Round 3** (1dc, 2dc in next st) 6 times. [18 sts]

**Round 4** (5dc, 2dc in next st) 3 times. [21 sts]

**Rounds 5-8** 21dc.

Fasten off first Foot.

Work second Foot, do not fasten off.

### Join Feet to Belly

Join both Feet and Belly together in next round, then cont to work Mid-section to Head of Body in one piece.

**Round 9** *Note: see photo tutorial opposite.* Cont with Yarn A, 9dc in second Foot (already on hook), 12dc blo in Row 3 of Belly, 18dc in first Foot, skip 3 sts, 12dc in foundation chs of Belly, skip next 3 sts of second Foot, 9dc in second Foot. [60 sts]

### Mid-section to Head

*Note: leave Belly piece hanging while working in Yarn A sts of Body.*

**Rounds 10-29** 60dc.

**Round 30** (8dc, dc2tog) 6 times. [54 sts]

**Round 31** 54dc.

**Round 32** (7dc, dc2tog) 6 times. [48 sts]

**Rounds 33-35** 48dc.

Do not fasten off Yarn A, keeping it at back of work until Round 36.

## Belly Edging

Join Yarn D with ss to Belly (beside left Foot and above 3 skipped sts from Round 9), work dc sts evenly into sts and row ends around Belly, stopping at right Foot and before skipped 3 sts from Round 9, fasten off, leaving long tail to whip st Belly to Body. *Note: st count is not critical so long as sts lie flat.* Next, use Yarn D to whip st Belly Edging to Body, and Yarn A to whip st skipped 6 sts from Round 9 to Belly.

## Join Eye Section to Body

With Yarn C, whip st Eye Section to Head, using photo as guide for placement.

Insert safety eyes between Rows 3 and 4 of Eye Section.

Begin stuffing Body.

## Top of Head

**Round 36** (3dc, dc2tog, 3dc) 6 times. [42 sts]

**Rounds 37-38** 42dc.

**Round 39** (5dc, dc2tog) 6 times. [36 sts]

**Round 40** 36dc.

Cont stuffing.

**Round 41** (2dc, dc2tog, 2dc) 6 times. [30 sts]

**Round 42** (3dc, dc2tog) 6 times. [24 sts]

**Round 43** (1dc, dc2tog, 1dc) 6 times. [18 sts]

**Round 44** (1dc, dc2tog) 6 times. [12 sts]

Cont stuffing.

**Round 45** (Dc2tog) 6 times. [6 sts]

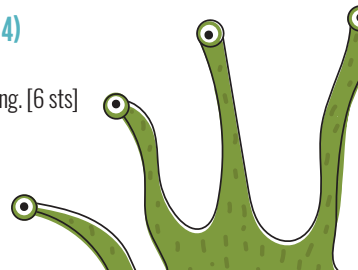
Fasten off.

## SMALL HORN (MAKE 4)

With Yarn B, make mr.

**Round 1 (RS)** 6dc in ring. [6 sts]

**Round 2 (RS)** 6dc.



**Round 3** (1dc, 2dc in next st) 3 times. [9 sts]

**Rounds 4-7** 9dc.

Fasten off, leaving long yarn tail.

## LARGE HORN

With Yarn D, make mr.

**Round 1 (RS)** 6dc in ring.

**Round 2 (RS)** (1dc, 2dc in next st) 3 times. [9 sts]

**Round 3** 9dc.

**Round 4** (1dc, 2dc in next st, 1dc) 3 times. [12 sts]

**Rounds 5-11** 12dc.

Fasten off, leaving long yarn tail.

## ARM (MAKE 2)

With Yarn A, make mr.

**Round 1 (RS)** 6dc in ring.

**Round 2 (RS)** 2dc in each st around. [12 sts]

**Round 3** (3dc, 2dc in next st) 3 times. [15 sts]

**Rounds 4-12** 15dc.

**Round 13** Flatten opening and work through both layers: skip first st, 7dc. [7 sts]

Fasten off, leaving long yarn tail.

## TO FINISH

Use photo as guide.

Stuff Horns, then whip st onto Head using yarn tails. Attach Arms in same way between Rounds 26 and 27 of Body.

With Yarns B and C, embroider mouth and tooth onto Head using straight sts, then three claws onto each Arm and Leg in same way.

Weave in all ends.

## HOW TO JOIN FEET TO BELLY

Follow these easy steps to join your amigurumi monster's feet to his belly in Round 9. You'll then continue to work the body from Round 10 onwards. The arrows on the images indicate the direction to work your crochet stitches.

Step 1



### Begin round with 9dc in Foot on hook

With the second Foot made already attached to hook, work a further 9dc, do not fasten off and continue to work into the Belly Piece in next step.

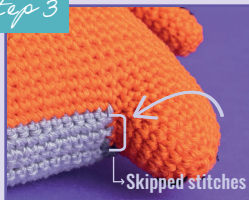
Step 2



### Join this Foot to Belly Piece Row 3 blo

With the Belly Piece held WS facing and upside-down (foundation chains/Row 1 uppermost), work 12dc into back loops of Row 3 of Belly Piece.

Step 3



### Join Belly Piece to first Foot made

With first Foot (which was fastened off and put aside) RS facing, continue to work 18dc, beginning in the first stitch of the last round. Skip last 3 stitches.

Step 4



### Work in Belly Piece Row 1 and join

With Belly Piece now RS facing, continue to work 12dc into foundation chains. Skip the next 3 stitches of the second Foot and work 9dc to complete Round 9.

# PRETTY LITTLE THINGS



CHECK OUT THE SCHEEPJES WEBSITE  
FOR MORE FUN PATTERNS!

© [WWW.SCHEEPJES.COM](http://WWW.SCHEEPJES.COM)

For errata information please visit:  
[www.scheepjes.com/en/errata](http://www.scheepjes.com/en/errata)

